

BENEFITS OF URBAN TREES

Our urban forest provides us cleaner air, a habitat for wildlife, summer shade, climate change mitigation, and reduced storm water runoff. Conserving, protecting, and growing our urban forest benefits everyone in our city. As our city grows, balancing tree retention, development, and replanting is increasingly important.

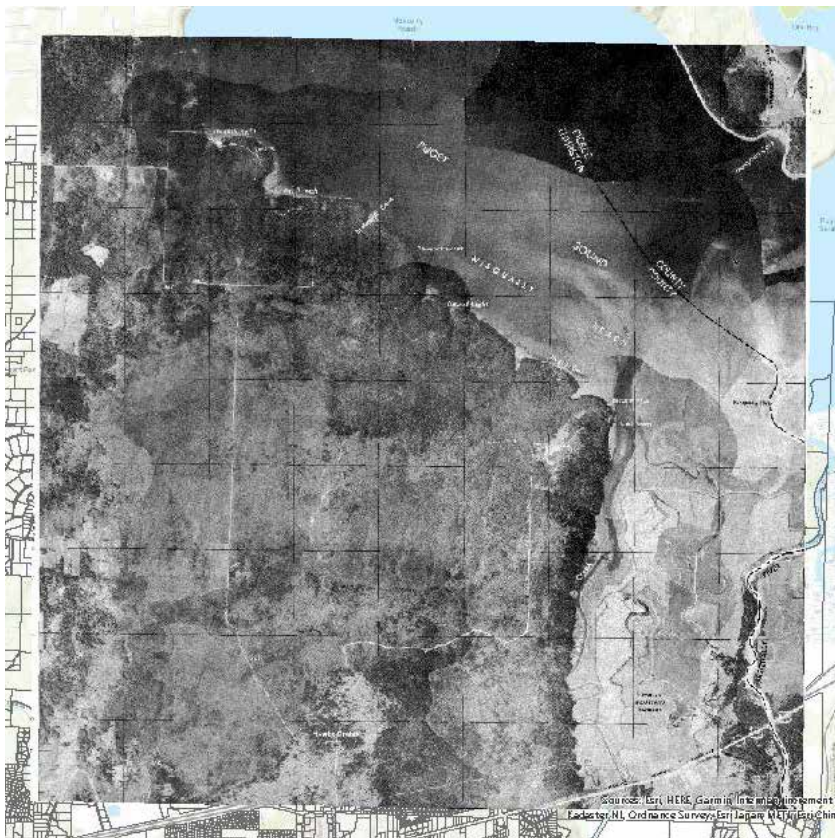
We are in the process of updating our Urban Forest Management Plan, the overarching policy document that guides the City's urban forestry vision and efforts. An important part of that update is to **provide residents with information about our trees.**



LACEY'S LANDSCAPE OVER TIME

Like most cities in the South Sound, Lacey was built in a mostly forested environment with scattered prairies. Native stands of Douglas fir, red cedar, alder, maple, and oak flourished in our gravelly soils. As our City grew, land with stands of native trees was converted into farms and industrial timberlands. These cultivated lands were eventually displaced by residential and commercial developments. Streets and parking lots covered much of the land. The need to conserve natural stands of trees and replant our City became apparent. The City adopted urban forestry as a policy to help regrow trees and other vegetation within city limits.

- Lacey City Forester



1944 aerial photo of NE Lacey showing prairie land (light areas) and forest land (dark areas).

DID YOU KNOW?

The City of Lacey was one of the first cities in Washington to receive the National Arbor Day Foundation's "Tree City USA" award.

Since first receiving the Tree City USA designation in the early 1990s, Lacey has invested more than \$7.5 million in its tree planting and care, and distributed 33,000 free tree seedlings to residents.





DID YOU KNOW?

Over the last five years, Stream Team of Thurston County's Lacey volunteers have planted over 1,600 trees and shrubs.



In 1991, the City of Lacey adopted a tree-protection ordinance. Among other policies, the City prioritized retention of trees in developments and required most properties to retain or replant a minimum number of trees so the overall tree canopy would not decline.



TREE CANOPY ASSESSMENT

Urban Tree Canopy refers to the layer of tree leaves, branches, and stems that provide coverage of the ground when viewed from above. Using a tree-canopy assessment the City can see how the urban tree canopy changes over time. The City recently completed a tree-canopy assessment to analyze how much tree cover the City currently has and where.

Currently, about a third of the City has tree cover. (See City of Lacey Tree-Canopy map on page 4.)

Tree canopy is abundant in park areas, on boulevards with street trees, and in older neighborhoods. In newer developments, the trees are just starting to take off and aren't providing as much canopy cover yet. Imagine what the canopy cover will look like in just ten years in our neighborhoods where the trees are small now but will provide much needed shade as they grow. You can help by keeping your trees healthy by properly pruning them.



DID YOU KNOW?

The City of Lacey maintains nearly 6,000 formal street trees along its roadways and boulevards, and features more than 1,200 acres of public parkland and open space — one of the largest municipal park systems on South Puget Sound — much of it permanently preserving large areas of natural forest.

CHOOSING THE RIGHT TREE*

A healthy community forest begins with careful planning. With a little research and a simple layout, you can produce a landscape that cools your home in summer and tames the winter winds. Your well-planned yard will include trees that grow well in the soil and moisture of your area, are properly placed to avoid collisions with power lines and buildings, and have aesthetics that will increase your property value.

A proper landscape plan takes each tree into consideration:

- Height. Will the tree bump into anything when it is fully grown?
- Canopy spread. How wide will the tree grow?
- Is the tree deciduous or evergreen? (Will it lose its leaves in the winter?)
- Form or shape. A columnar tree grows in less space. Round and v-shaped trees provide the most shade.
- Growth rate. How long will it take for your tree to reach its full height?
- Soil, sun, and moisture requirements.
- Fruit. No one wants messy droppings on busy sidewalks.
- Hardiness zone indicates the temperature extremes in which a tree can be expected to grow. Check with a local certified arborist for a list of trees suitable for Lacey. (Arborday.org)

*From the Arbor Day Foundation



DID YOU KNOW?

Over the past 28 years, the City of Lacey has given away over 30,000 free seedlings to residents at the annual Arbor Day Event.

CITY OF LACEY TREE REGULATIONS 101

- You must get a permit to remove a tree on private property; however, you may qualify for an exemption. Call the City to discuss your property before hiring a tree service.
- Topping trees is not pruning. Topping a tree is illegal and considered tree removal without a permit. Hire a certified arborist to prune your trees and keep them healthy.
- Contact our Public Works Department regarding street-tree maintenance. Some are maintained by the City, others by Homeowners Associations (HOA).
- Homeowners Association (HOA) managers should call the City to discuss forester reviews, removals, replantings, and permits in HOA open spaces and common areas with trees.



LEARN MORE ABOUT TREE PROTECTION IN LACEY

Check out our 5-part video series:

- 1: Introduction to Lacey's Tree Protection Ordinance
- 2: Lacey's Tree Protection Professionals
- 3: Trees and Development Process
- 4: Street Trees of Lacey
- 5: Trees on Private Property



CITY OF LACEY

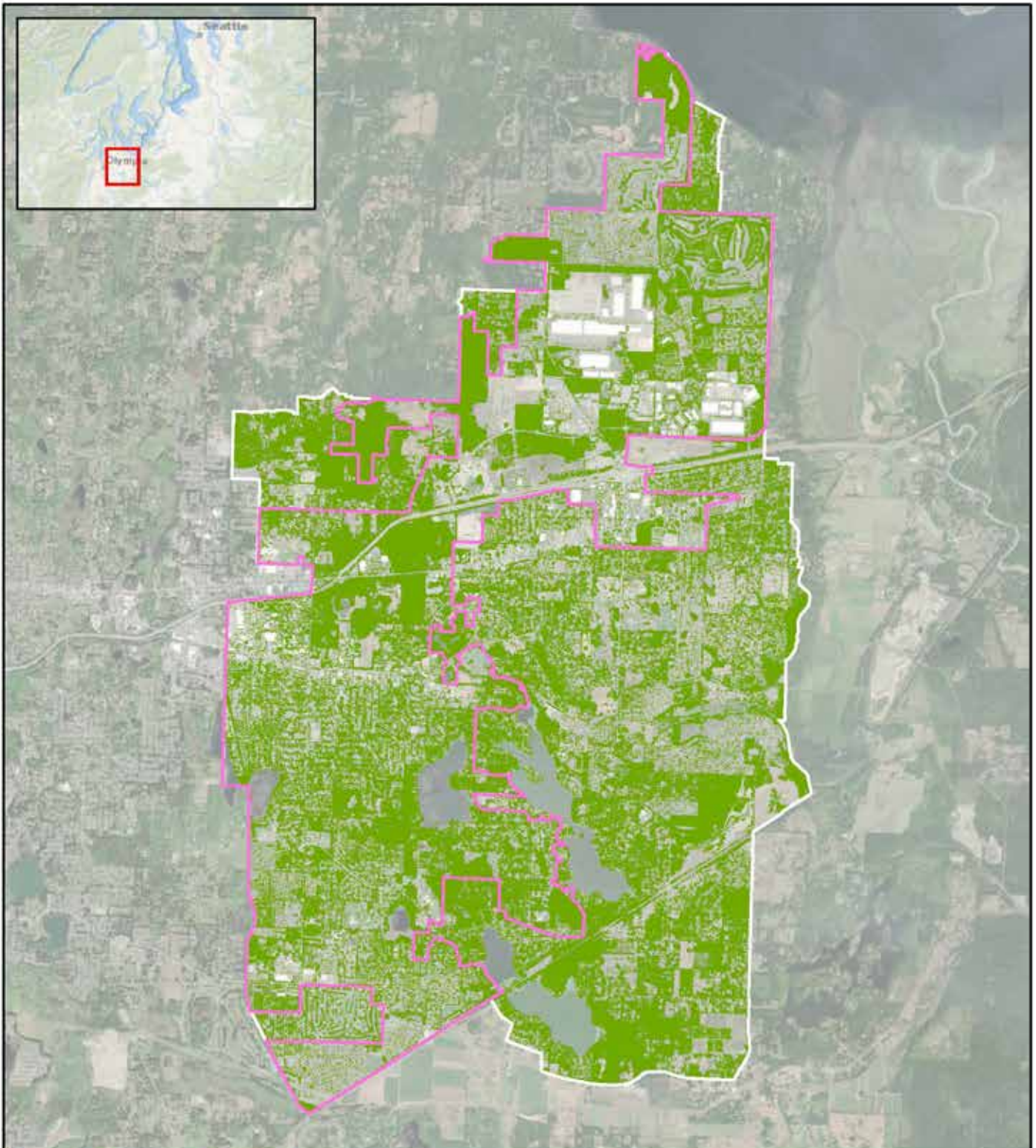
Contact Information:

Community and Economic Development

email: Planning@ci.lacey.wa.us


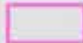

call: (360) 491-5642

visit: ci.lacey.wa.us/Trees



City of Lacey - Tree Canopy

Legend

-  Tree Canopy (29.7%¹ within total UGA)
-  City Limits (28.3% Canopy)
-  UGA (31.3% Canopy outside City Limits, within UGA)

Miles

0 1



All percentages adjusted according to accuracy analysis.