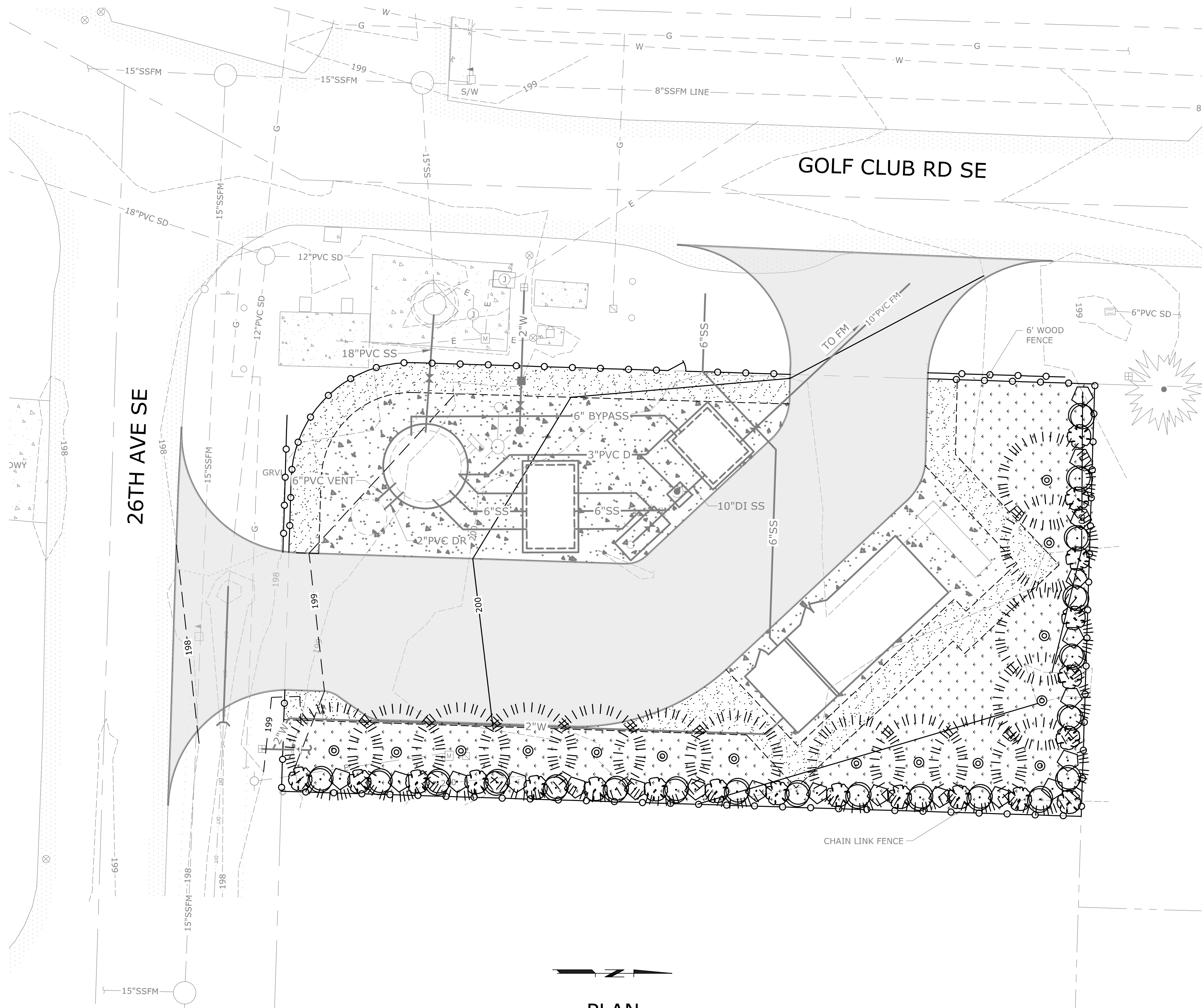


C:\Users\Watt\Step\AppData\Local\Temp\AcPublish\_21888\21-3171-WA-L1.dwg L-1 2/17/2022 5:37 PM MATT. ESTEP 23.05 (LMS Tech)



**PLAN**  
SCALE: 1"=10'

**LEGEND**

SYMBOL	QUANTITY	COMMON NAME BOTANICAL NAME	PLANT TYPE	PLANTING SIZE	LOCATION
	15	YEW TAXUS BREVIFOLIA	TREE	7 FT	AS SHOWN
	20	REDOSIER DOGWOOD CORNUS SERICEA	SHRUB	2 GAL	AS SHOWN
	20	TALL OREGON GRAPE MAHONIA AQUIFOLIUM	SHRUB	2 GAL	AS SHOWN
	20	SALMONBERRY RUBUS SPECTABILIS	SHRUB	2 GAL	AS SHOWN
	3 LB	SEEDING AREA, 2761 SF SEE DETAILS, SHEET L-2			
		EXISTING TREES			

**NOTE:**

1. SEE PLANTING DETAILS AND LANDSCAPE MAINTENANCE NOTES AT SHEET L-2.

**60% SUBMITTAL**

NO.	DATE	BY	REVISION

**NOTICE**  
0 1/2 1  
IF THIS BAR DOES NOT MEASURE 1" THEN DRAWING IS NOT TO SCALE

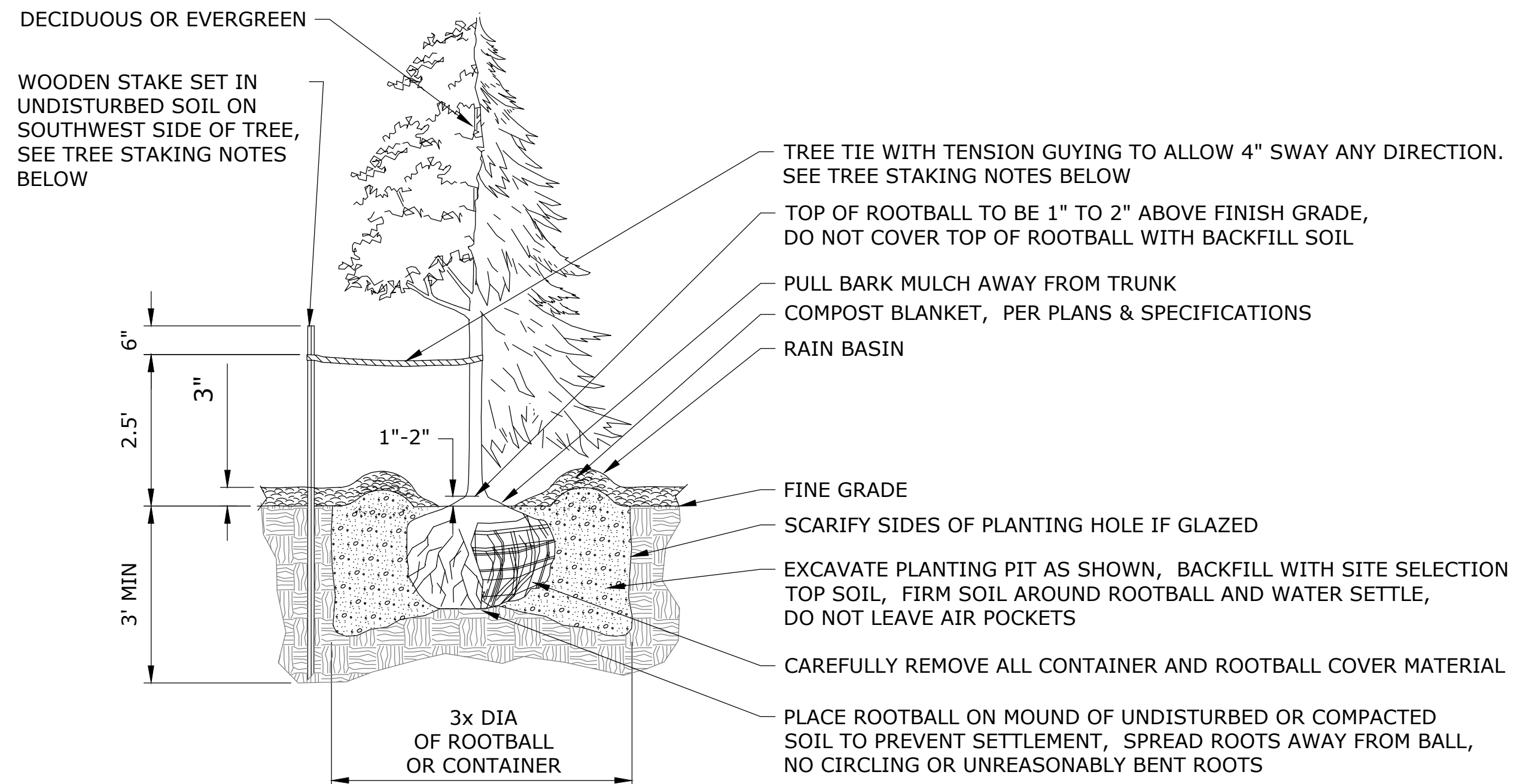
FE  
DESIGNED  
MNF  
DRAWN  
FE  
CHECKED



**CITY OF LACEY  
LIFT STATION  
NO. 3  
REPLACEMENT**

<b>PLANTING PLAN</b>			
PROJECT NO.:	21-3171	SCALE:	AS SHOWN
DATE:	FEBRUARY 2022		

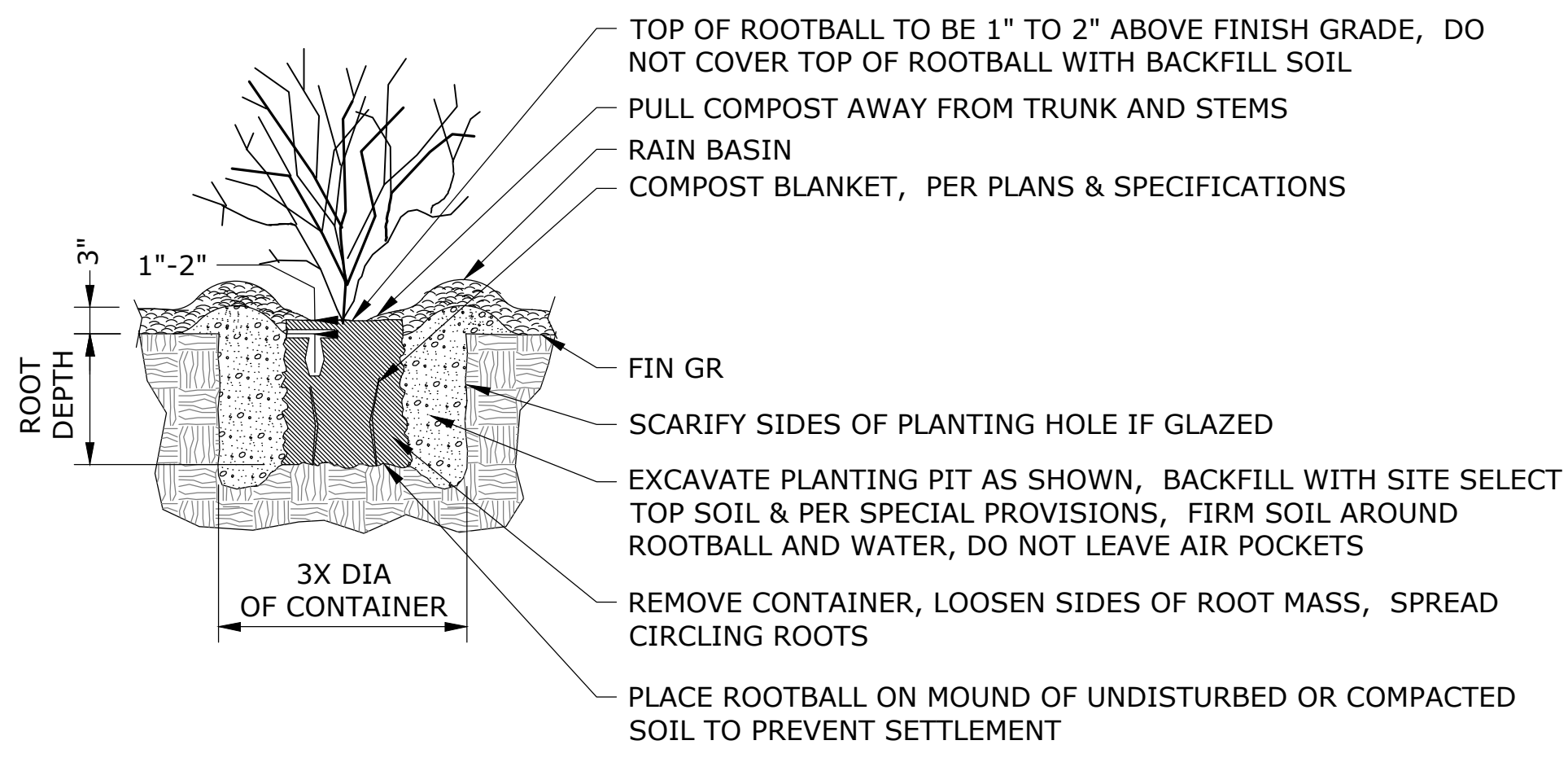
SHEET  
**L-1**  
16 of 51



**NOTES:**

- TREE TIES TO BE EITHER:  
 RIGID GUY SYSTEM WITH GALVANIZED WIRE TO BE APPROXIMATELY 1/8" THICKNESS AND 24" LENGTH. THERE IS A PLASTIC SLEEVE OVER PORTION THAT GOES AROUND TREE. THE WIRE TIE IS TO GO THRU THE WOOD STAKE AND BE SECURELY FASTENED.  
 PLASTIC CHAIN TYPE, APPROXIMATELY 1" WIDTH BY 1/8" DEPTH WHERE TWO STAKES ARE REQUIRED. CROSS TIES BETWEEN STAKES AND WRAP TIE AROUND TREE. FASTEN SECURELY TO STAKE.
- EXCAVATE ALL PLANT WELLS PER DETAIL AT 3X DIAMETER OF ROOTBALL OR CONTAINER AND BACKFILL WITH SITE SELECT TOPSOIL FREE OF NOXIOUS WEEDS PLANT MATERIAL INCLUDING ROOTS AND SPRIGS.
- FURNISH TREE STAKES ON ALL TREE PLANTINGS. STAKES TO BE CONSTRUCTION GRADE, ROUGH SAWN OR FINISHED DOUGLAS FIR OR PINE. STAIN WITH APPROVED GREEN PENETRATING OIL. STAKE SIZE IS TO BE 1 1/2"x1-1/2" BY FOLLOWING LENGTHS:  
 TREES 36" AND SHORTER - USE ONE - 6' (APPROXIMATELY) STAKE  
 TREES TALLER THAN 36" - USE ONE - 8' (APPROXIMATELY) STAKE  
 DRIVE STAKES VERTICALLY AND AT LEAST 24" INTO UNDISTURBED SOIL. DO NOT DRIVE STAKES THRU ROOT BALL. LOCATE STAKES TO BEST RESIST PREVAILING WINDS.

**TREE PLANTING DETAIL 1**  
SCALE: NTS



**SHRUB PLANTING DETAIL 2**  
SCALE: NTS

**PLANTING METHODS:**

- SOIL PREPARATION: TILL THE SUB-GRADE IN THESE AREAS TO A DEPTH OF AT LEAST FOUR INCHES AND ADD AT LEAST 12 INCHES OF CLEAN COMPOST-AMENDED TOPSOIL. THE COMPOST-AMENDED TOPSOIL SHALL HAVE A GOOD GROWING MEDIUM WITH TEXTURE MATERIAL THAT PASSES THROUGH ONE-INCH AND 35% ORGANIC MATTER FERTILITY.
- PLANTING TIME: CONTAINERIZED STOCK SHALL BE INSTALLED ONLY FROM FEBRUARY 1 THROUGH MAY 1 AND OCTOBER 1 THROUGH NOVEMBER 15. PLANTINGS OUTSIDE THESE TIMES MAY REQUIRE ADDITIONAL MEASURES TO ENSURE SURVIVAL WHICH SHALL BE SPECIFIED ON THE PLANS.
- INSTALLED PLANTS SHALL TAGGED FOR DORMANT SEASON IDENTIFICATION AND SHALL REMAIN ON PLANT MATERIALS AFTER PLANTING FOR MONITORING PURPOSES.
- EROSION CONTROL: GRADING, SOIL PREPARATION, AND SEEDING SHALL BE PERFORMED DURING OPTIMAL WEATHER CONDITIONS AND AT LOW FLOW LEVELS TO MINIMIZE SEDIMENT IMPACTS.
- MULCHING: TREES, SHRUBS, AND GROUNDCOVER AREAS SHALL BE MULCHED A MINIMUM OF THREE INCHES IN DEPTH AND 18 INCHES IN DIAMETER, TO RETAIN MOISTURE AND DISCOURAGE WEED GROWTH AROUND NEWLY INSTALLED PLANT MATERIAL. APPROPRIATE MULCHES ARE MADE FROM COMPOSTED BARK OR LEAVES THAT HAVE NOT BEEN CHEMICALLY TREATED.
- WEED CONTROL: THE REMOVAL OF NON-NATIVE, INVASIVE WEEDS SHALL BE NECESSARY THROUGHOUT THE MAINTENANCE PERIOD, OR UNTIL A HEALTHY STAND OF DESIRABLE VEGETATION IS ESTABLISHED.
- PLANT REPLACEMENT AND PRESERVATION: INSTALLED PLANTS THAT ARE UNHEALTHY OR DAMAGED SHALL BE REPLACED DURING THE MAINTENANCE PERIOD. PRIOR TO REPLACEMENT, THE CAUSE OF LOSS (WILDLIFE DAMAGE, POOR PLANT STOCK, ETC.) SHALL BE DOCUMENTED WITH A DESCRIPTION OF THE CORRECTIVE ACTIONS TAKEN.
- IF PLANTING OCCURRED OUT OF PLANTING PERIODS INDICATED AT NOTE 2 ABOVE, THE FOLLOWING MEASURES SHOULD BE APPLIED:
  - HAVE PLANTS INSPECTED FOR EARLY SYMPTOMS OF POOR HEALTH. TREES AFFECTED BY EARLY STAGES OF STRESS COULD DISPLAY PREMATURE FALL COLOR IN LATE SUMMER, PARTIAL DEFOLIATION AND SYMPTOMS OF MOISTURE STRESS.
  - PROVIDE SUPPLEMENTAL IRRIGATION EACH WEEK OR MORE OFTEN ON NEWLY PLANTED TREES, SHRUBS AND OLDER PLANTS STRESSED WITH INSECT OR DISEASE PROBLEMS WHEN RAINFALL IS LACKING IN SUMMER.
  - PRUNE FLOWERING TREES AND SHRUBS ONCE FLOWER BUDS BEGIN TO FORM IN LATE SUMMER, JUDICIOUS PRUNING REDUCES THE BLOOM SOMEWHAT BUT SHOULD NOT IMPACT THE DISPLAY SIGNIFICANTLY.
  - INSPECT FOR PESTS THAT COMMONLY ARRIVE DURING HOT, DRY WEATHER AND APPLY TREATMENTS AS NEEDED.
  - ASSESS CANOPIES FOR DEAD BRANCHES AND STRUCTURAL WEAKNESSES THAT CAN BE PRUNED LATER IN WINTER.

**PLANTS MAINTENANCE NOTES:**

- CONTRACTOR SHALL PROVIDE 2 YEARS PLANT ESTABLISHMENT PERIOD TO MAINTAIN PLANTS IN A VIGOROUS GROWING CONDITION THROUGH WATERING AND PERIODIC INSPECTIONS. DURING PLANT ESTABLISHMENT PERIOD, THE CONTRACTOR SHALL ENSURE PLANTING AREAS ARE FREE OF INVASIVE WEEDS AND PLANTS SHALL BE FREE OF INSECTS AND DISEASES WHILE SHOWING SIGNS OF CONTINUING HEALTH. THE CONTRACTOR SHALL REPLACE ALL PLANTS THAT SHOW UNHEALTHY SIGNS OR ARE DEAD.
- THE MAINTENANCE PERIOD BEGINS IMMEDIATELY AFTER THE COMPLETION OF ALL PLANTING OPERATION AND WRITTEN NOTIFICATION TO THE ENGINEER.
- OTHER MAINTENANCE OPERATIONS DURING THE ONE-YEAR GUARANTEE PERIOD:
  - RESET PLANTS TO FINISH GRADE AND RESTORATION OF PLANT SAUCERS, AS NECESSARY
  - REPAIR DAMAGED OR WASHED OUT EROSION CONTROL SEEDING.
  - PRUNING, INCLUDING REMOVAL OF DEAD OR BROKEN BRANCHES.
  - DISEASE CONTROL.
  - MAINTAINING WRAPPING, GUYS, [TURNBUCKLES,] AND STAKES. [ADJUST TURNBUCKLES TO KEEP GUY WIRES TIGHT.] REPAIR OR REPLACE ACCESSORIES WHEN REQUIRED.
  - REPORT ANY PROBLEMS THAT MAY BE A HINDRANCE TO COMPLETING AND FULFILLING THE CONDITIONS OF THE PLANT GUARANTEE WITHIN 7 DAYS TO THE OWNER.

**SEEDING AREA**

**SEED MIX:**

BOTANICAL NAME	COMMON NAME	PLS LBS. PER ACRE
ELYMUS GLAUCUS	BLUE WILD RYE	21.74
FESTUCA RUBRA RUBRA	NATIVE WILD FESCUE	6.52
HORDEUM BRACHYANTHERUM	MEADOW BARLEY	4.35
GLYCERIA OCCIDENTALLIS	WESTERN MANNAGRASS	4.35
BECKMANNI SYZIGACHNE	AMERICAN SLOUGHGRASS	4.35
DESCHAMPSIA CAESPITOSA	TUFTED HAIRGRASS	2.17
	TOTAL	43.38

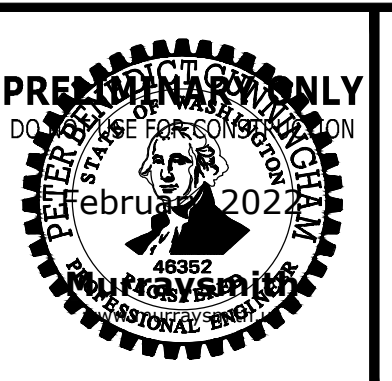
**60% SUBMITTAL**

C:\Users\Watt\Estet\Temp\AcPublish\21888\21-3171-WA-L1.dwg L-2 2/17/2022 5:37 PM MATT. ESTEP 23.05 (LMS Tech)

NO.	DATE	BY	REVISION

NOTICE  
0 1/2 1  
IF THIS BAR DOES NOT MEASURE 1" THEN DRAWING IS NOT TO SCALE

FE DESIGNED  
MNF DRAWN  
FE CHECKED



**CITY OF LACEY  
LIFT STATION  
NO. 3  
REPLACEMENT**

PROJECT NO.:	21-3171	SCALE:	AS SHOWN	DATE:	FEBRUARY 2022
--------------	---------	--------	----------	-------	---------------

SHEET  
**L-2**  
17 of 51