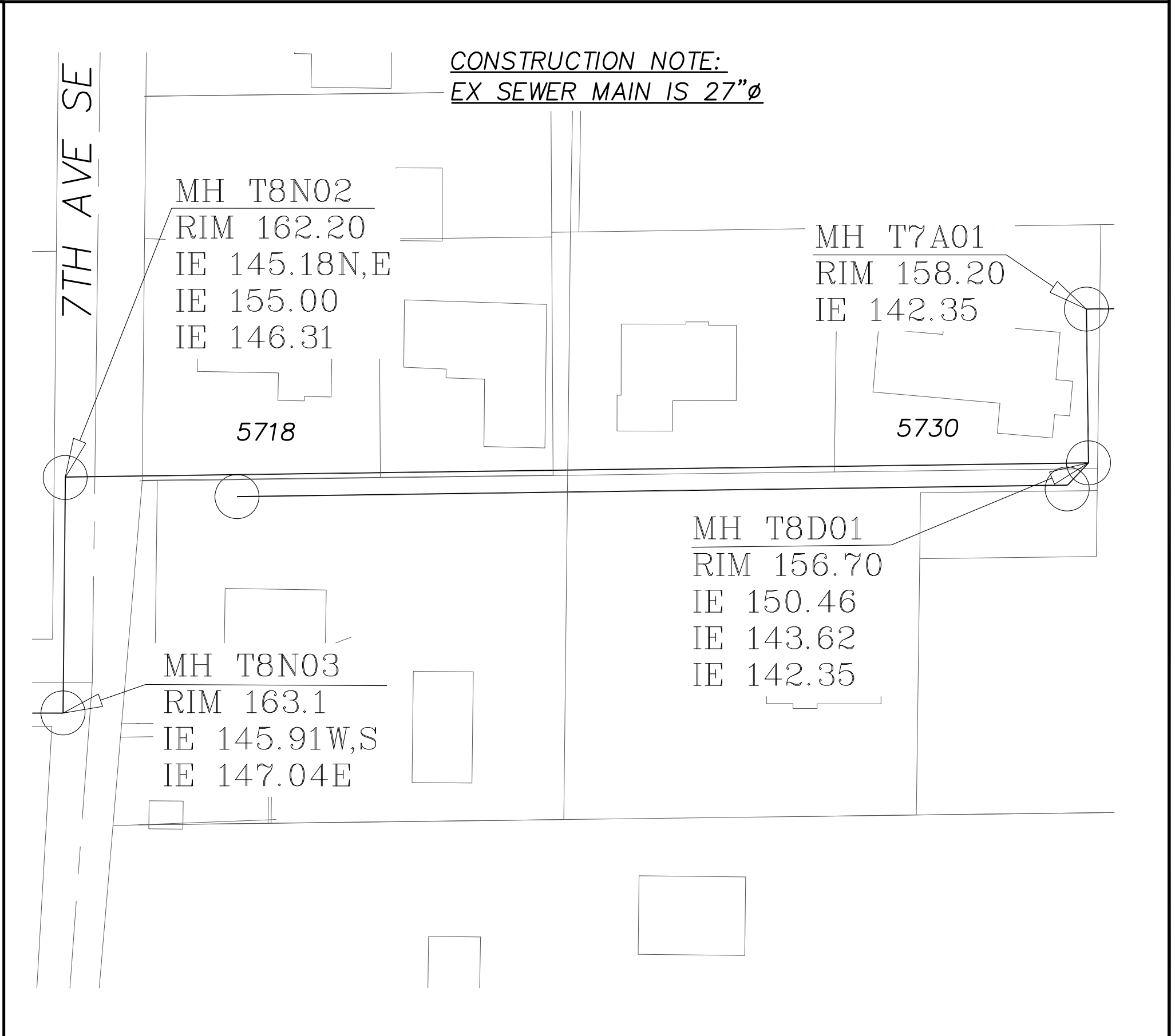
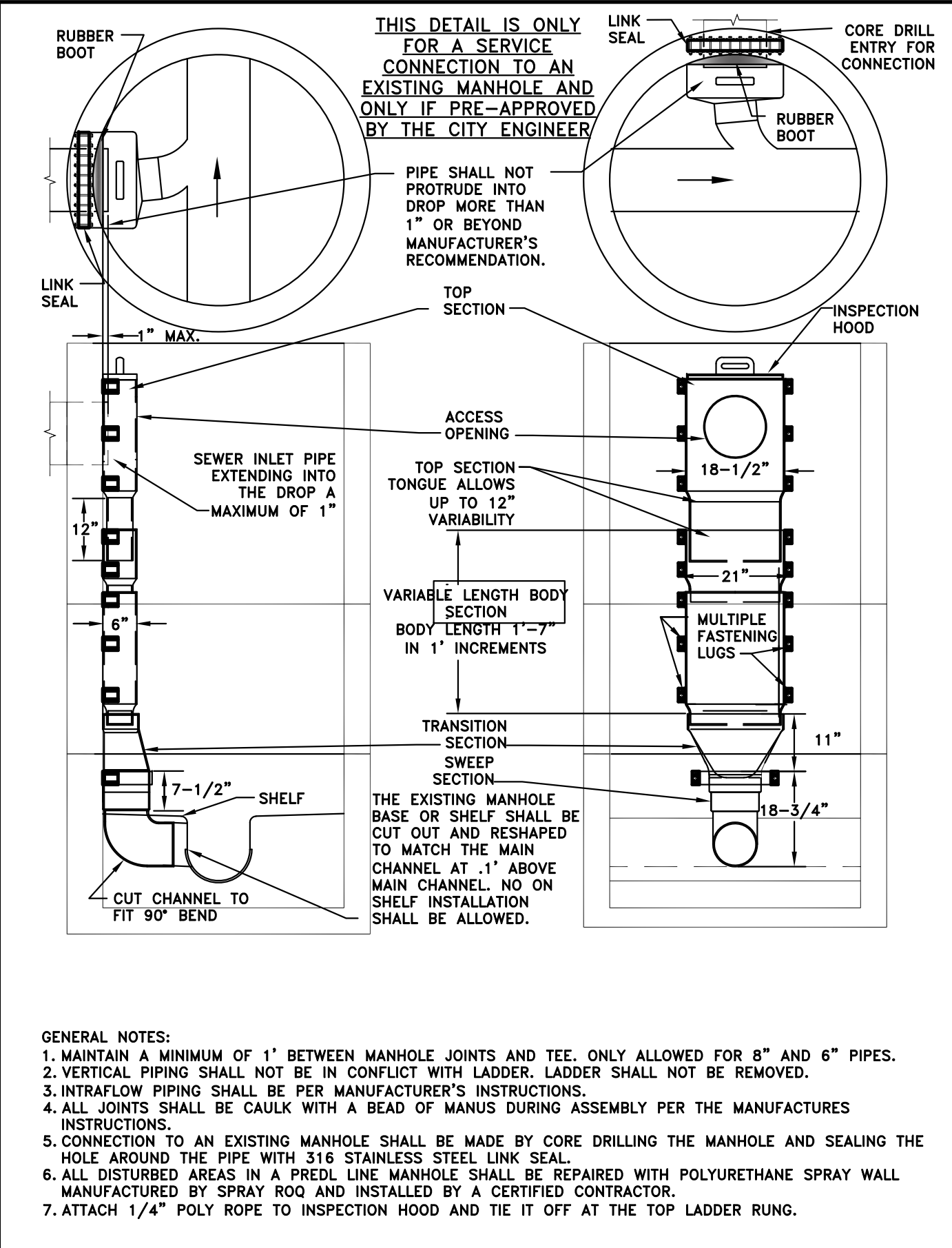
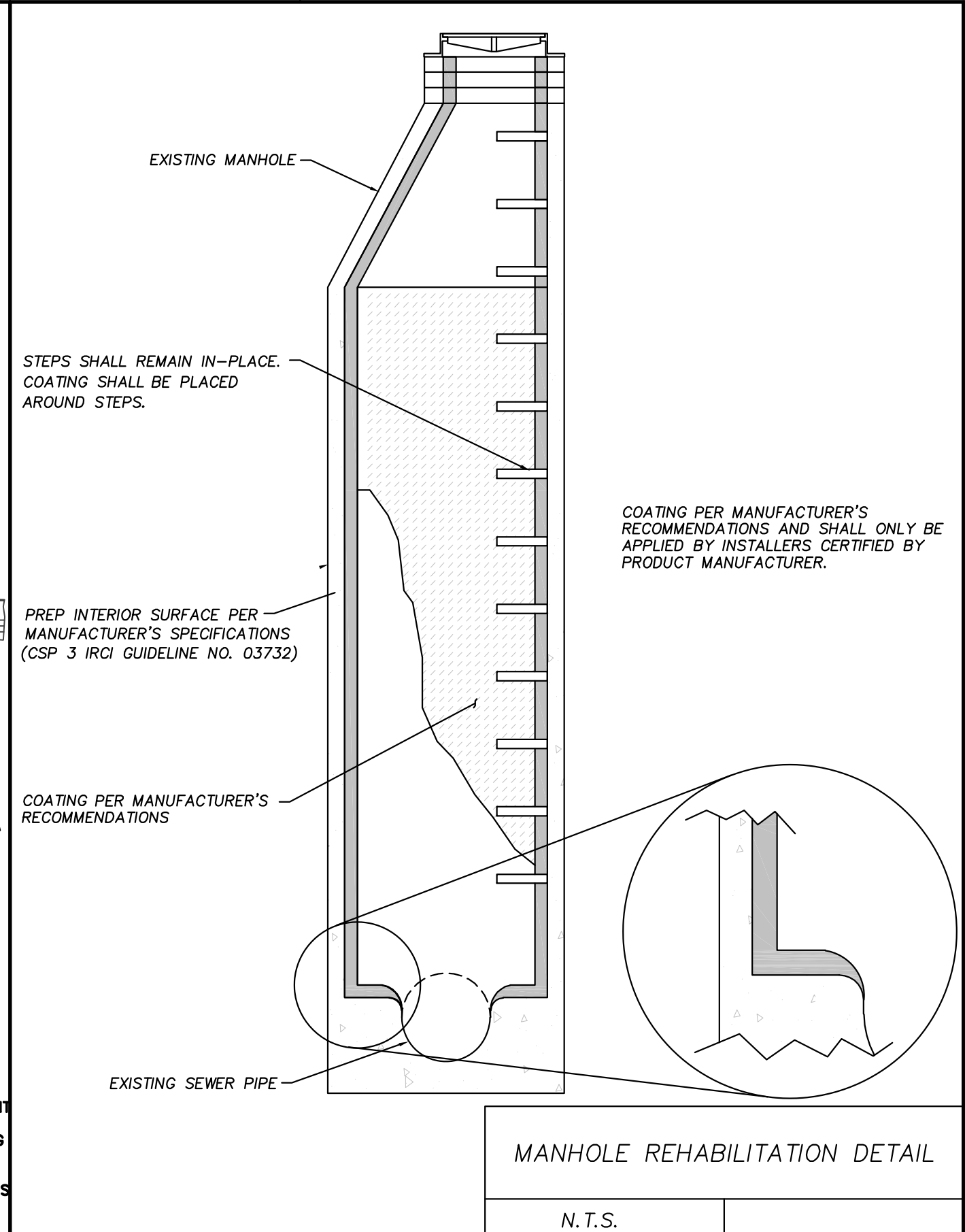
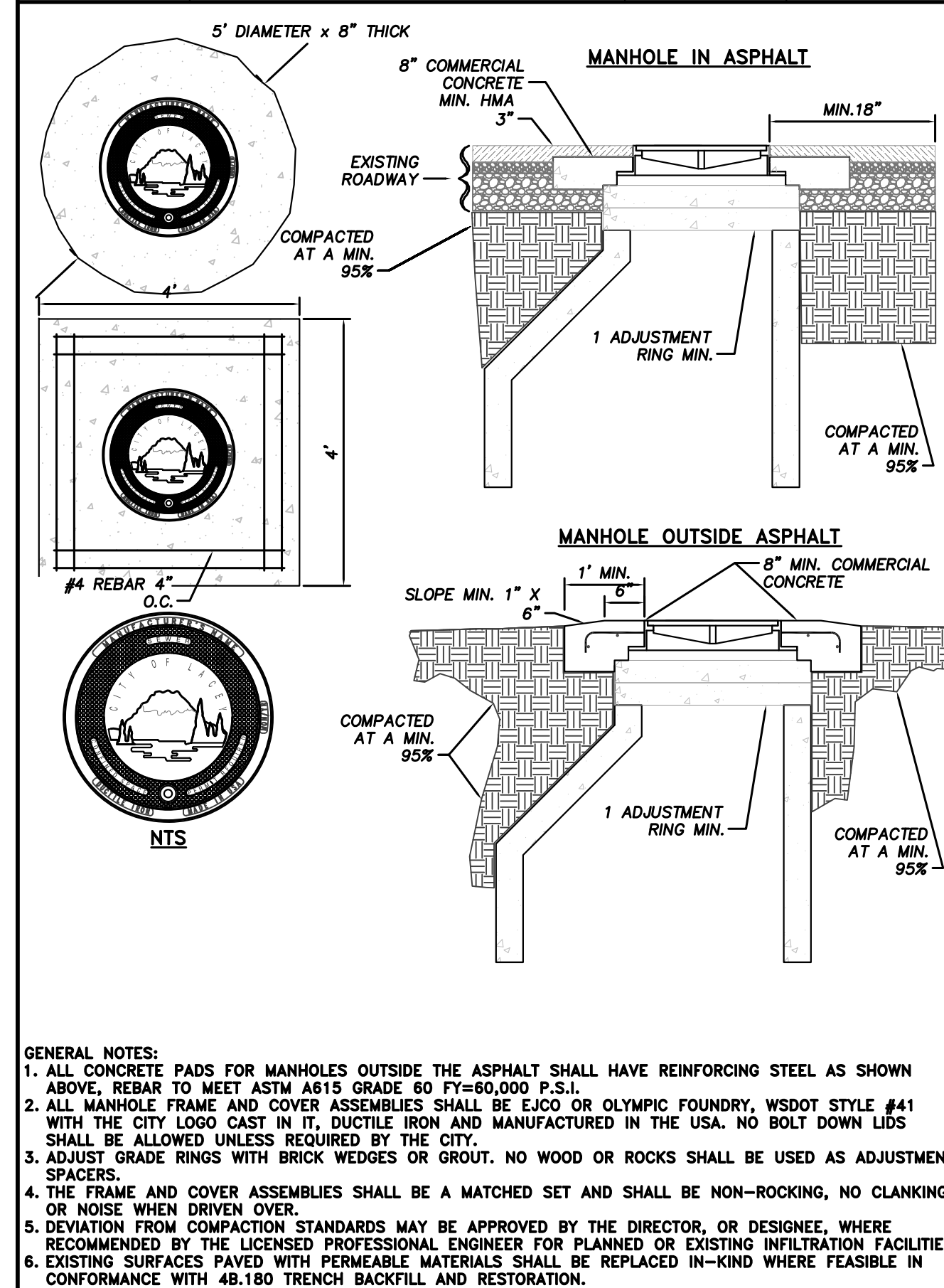


MH ID	LOCATION	Ø INCHES	DEPTH INCHES	RING & COVER SIZE INCHES	NOTES
WAN02	914 LACEY ST SE	72	338	26	FIBERGLASS LINER/PANELS NEED TO BE REMOVED, EXPOSED AGGREGATE NEEDS TO BE REHABILITATED, REPLACE RING & COVER
WAD01	824 LACEY ST SE	72	256	26	FIBERGLASS LINER/PANELS NEED TO BE REMOVED, EXPOSED AGGREGATE NEEDS TO BE REHABILITATED, REQUIRES PRESSURE GROUTING, REPLACE RING & COVER
T8401	800 LACEY ST SE	60	230	26	EXPOSED AGGREGATE NEEDS TO BE REHABILITATED, REQUIRES PRESSURE GROUTING, REPLACE RING & COVER
T8W01	808 LACEY ST SE	60	223	26	EXPOSED AGGREGATE NEEDS TO BE REHABILITATED, REQUIRES PRESSURE GROUTING, REPLACE RING & COVER
T8N03	802 LACEY ST SE	72	198	26	EXPOSED AGGREGATE NEEDS TO BE REHABILITATED, REQUIRES PRESSURE GROUTING, REPLACE RING & COVER
T8N02	5718 7TH AVE SE	60	198	26	EXPOSED AGGREGATE NEEDS TO BE REHABILITATED, REQUIRES PRESSURE GROUTING, REPLACE RING & COVER
T8D01	5730 7TH AVE SE	72	155	26	EXPOSED AGGREGATE NEEDS TO BE REHABILITATED, REPLACE RING & COVER
T7A01	5730 7TH AVE SE	72	182	26	EXPOSED AGGREGATE NEEDS TO BE REHABILITATED, REPLACE RING & COVER



CITY OF LACEY, WASHINGTON DEPARTMENT OF PUBLIC WORKS 420 COLLEGE STREET SE LACEY, WA 98503-1238 (360) 491-5600			DESIGNED: J.K.	2022 MANHOLE REHABILITATION	REVISION BLOCK		PAGE NO.	SHEET NO.
			DRAFTED: J.K.		NO.	DATE	DESCRIPTION	C1
			CHECKED: J.K.				DWG NO.	OF
			HORIZ. SCALE: 1"=50'				D-22-11	1
			VERT. SCALE: N/A					
			FILE: DRAWING2					