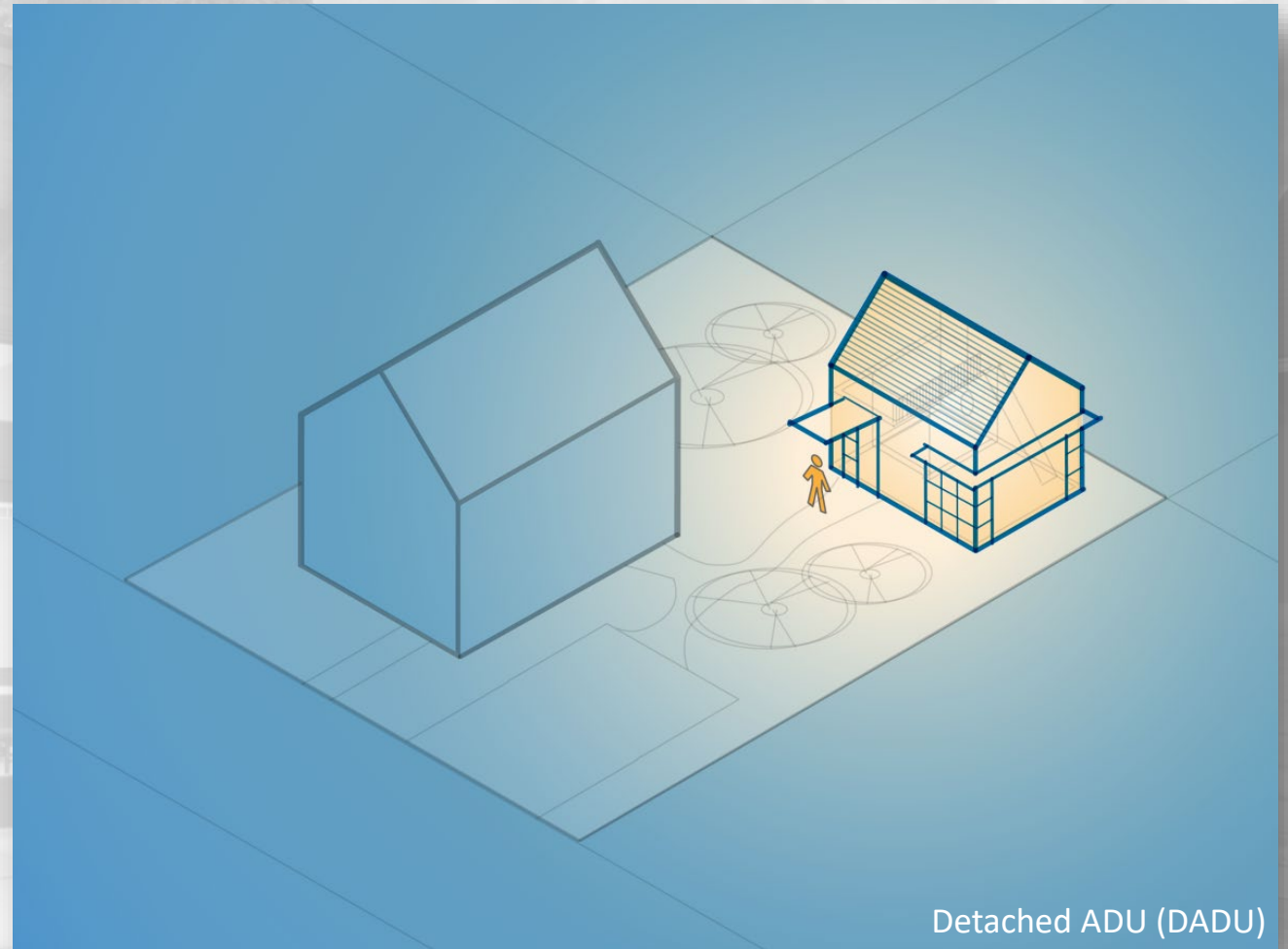


What is an Accessory Dwelling Unit?

An accessory dwelling unit (ADU) is a small, self-contained residential unit located on the same lot as an existing single-family home.

An ADU has all the basic facilities needed for day-to-day living independent of the main home, such as a kitchen, sleeping area, and a bathroom. As the term "accessory" implies, ADUs are generally defined to be smaller in size and prominence than the main residence on the lot.

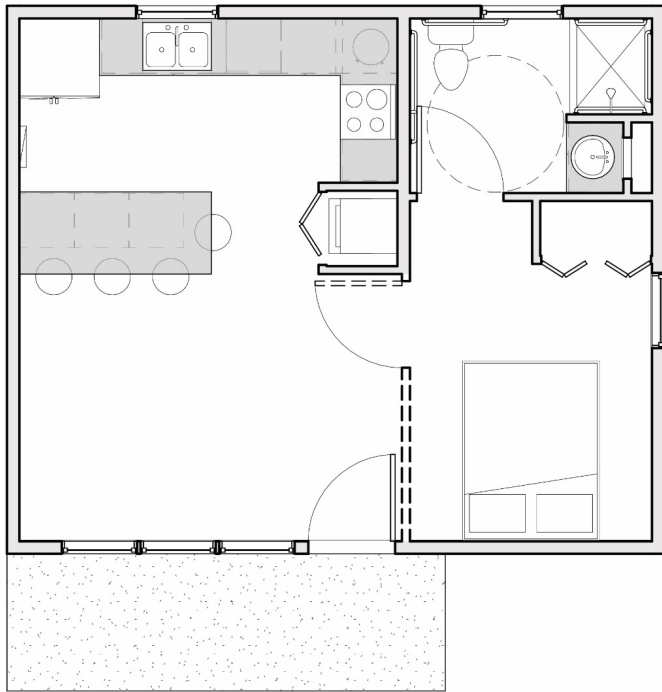
-Municipal Research and Services Center (MRSC)



Detached ADU (DADU)

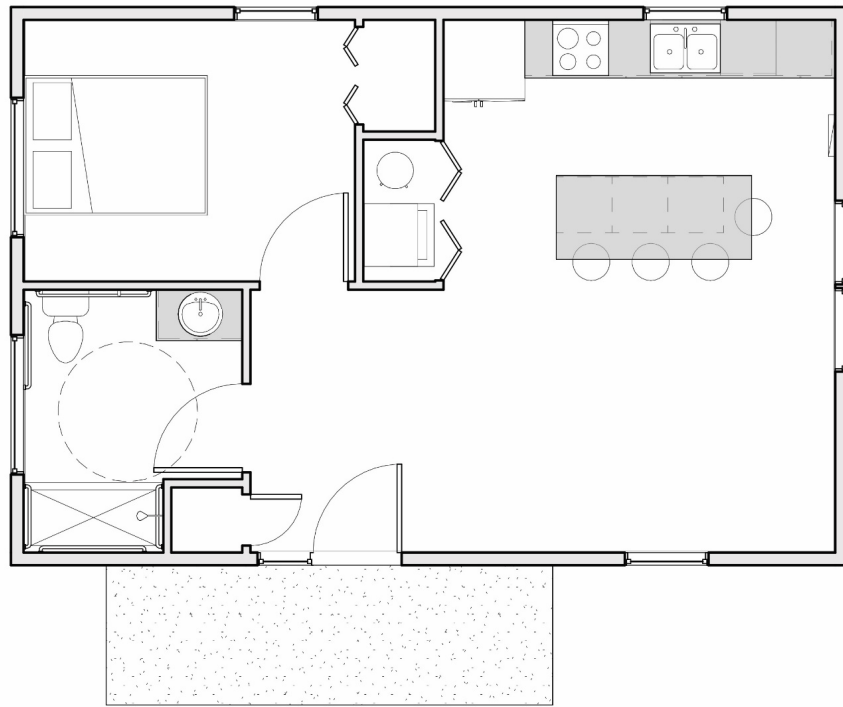
Studio

480 square feet



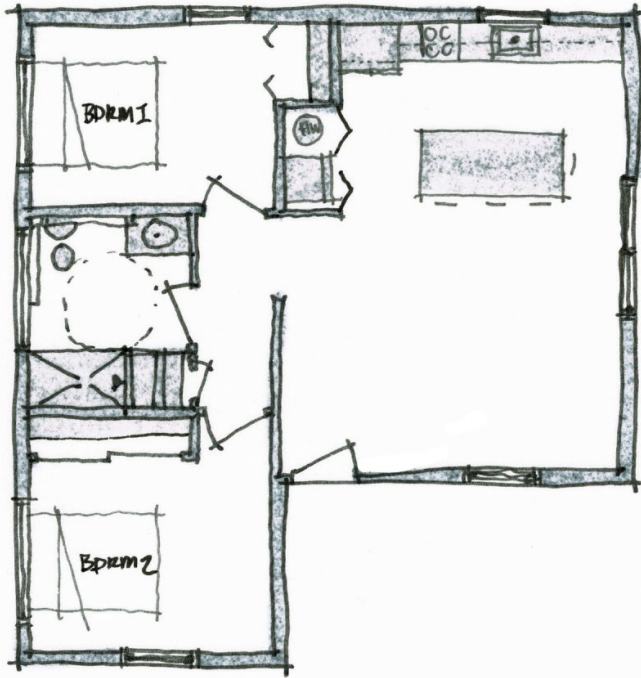
1 Bedroom

600 square feet



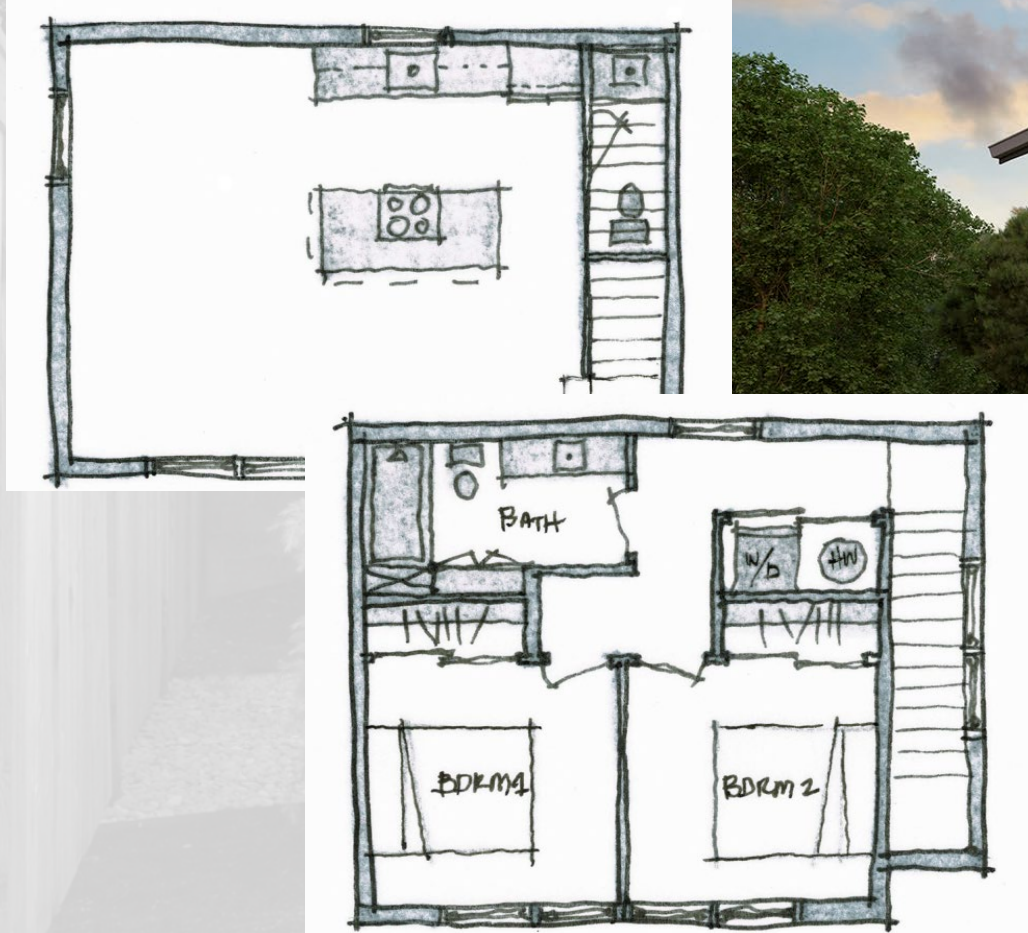
2 Bedroom

800 square feet



2 Story

800 square feet



Examples of Exterior Cladding

