



Shaping
our community
together

CITY
OF **LACEY**

420 COLLEGE ST SE
LACEY, WA 98503

ADDENDUM NO. 4

TO THE PLANS, SPECIFICATIONS, PROPOSAL AND CONTRACT FOR THE CITY OF LACEY

BEACHCREST WELLFIELD IMPROVEMENTS

LACEY CONTRACT NO. PW 2019-29

TO ALL PLAN HOLDERS:

You are hereby notified of the following changes, revisions, deletions, additions, corrections and/or clarifications to the plans, specifications, and contract documents for the *BEACHCREST WELLFIELD PH IMPROVEMENTS* project. This addendum is made part of these contract documents as though it was originally included in the Contract. The Contractor shall note the location of the Addenda Receipt Acknowledgement on Page B-3 of the Contract Proposal.

Issued this 27th day of December 2022.

I. ADDITIONS, MODIFICATIONS, AND/OR DELETIONS TO THE SPECIFICATIONS

ITEM NO. 1: Section A

- 1) *The revisions include addition of second non-mandatory preproposal meeting.*
Add the following:

“A SECOND NON-MANDATORY PREBID CONFERENCE IS SCHEDULED FOR December 29, 2022 at 10am. We will meet at the City of Lacey Beachcrest Wells site at 8905 48th Way NE, Olympia, 98516.”

ITEM NO. 2: Section B

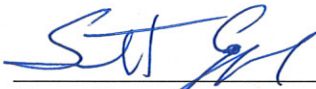
- 2) *The revisions include changes to the addenda acknowledgment area.*
DELETE Bid Proposal Pages B-1 to B-3 and **REPLACE** with new Bid Proposal as attached.

II. **ADDITIONS, MODIFICATIONS, AND/OR DELETIONS TO THE PLANS**

ITEM NO. 3:
Sheet M-2

3) *The revisions include modifications to the Notes on Sheet G-12.*

Delete Sheet G-12 and replace it with the new page as attached.



Scott Egger, P.E.
Director of Public Works

CITY OF LACEY

Beachcrest Wellfield pH Improvements

ADDENDUM 4

Lacey Contract Number: PW 2019-29

Federal Aid Project Number:

WSDOT Contract Number:

TIB Contract Number:

Contract Proposal

DATE: _____

The undersigned, as bidder, has examined the bid documents as prepared by the Public Works Department, City of Lacey.

The undersigned, as bidder, proposes to furnish all material and perform all labor in accordance with the bid documents at the following prices.

Bidder must fill in unit prices in figures for each item and total.

Bidder shall sign this proposal form and submit all required paperwork with the bid.

A Water

No.	Quantity	Unit	Item ID	Item Description	Unit Price	Extended Price
A1	200000	MC	104-010	Minor Change	\$1.00	\$200,000.00
A2	1	LS	105-010	Record Drawing	\$5,000.00	\$5,000.00
A3	1	LS	109-010	Mobilization	LUMP SUM	
A4	1	LS	201-010	Clearing and Grubbing	LUMP SUM	
A5	1	LS	202-510	Removal of Structures and Obstructions	LUMP SUM	
A6	1	LS	202-520	Special Removal of Structures and Obstructions	LUMP SUM	
A7	30	CY	203-120	Unsuitable Foundation Excavation Incl. Haul		
A8	1	LS	205-510	Trench Safety System	LUMP SUM	
A9	880	TN	404-010	Crushed Surfacing Base Course		
A10	40	TN	404-730	Washed Coarse Aggregate		
A11	310	TN	504-011	HMA Cl. 1/2" PG 58H-22		
A12	1	LS	701-500	Storm Infiltration System	LUMP SUM	
A13	330	LF	704-508	8 Inch Diameter Storm Sewer Pipe		
A14	70	LF	704-512	12 Inch Diameter Storm Sewer Pipe		
A15	6	EA	705-210	Catch Basin Type 1		
A16	3	EA	705-248	Catch Basin Type 2 - 48 In. Diam.		
A17	280	TN	708-610	Bank Run Gravel for Trench Backfill		
A18	220	TN	708-620	Imported Pipe Bedding		
A19	80	TN	708-670	Gravel Backfill For Walls		
A20	12	LF	709-503	3 Inch Water Main		
A21	130	LF	709-507	6 Inch D.I. Water Main		

A22	120	LF	709-509	8 Inch D.I. Water Main		
A23	10	LF	709-512	12 Inch D.I. Water Main		
A24	1	EA	709-950	Connect to Existing Water Main		
A25	2	EA	712-506	6 Inch Gate Valve		
A26	1	EA	712-508	8 Inch Gate Valve		
A27	1	EA	712-551	1 1/2 Inch Service Tap with Tapping Valve		
A28	1	EA	714-510	Hydrant Assembly		
A29	1	EA	715-530	1 1/2 Inch Single Meter Service Connected to Existing Water Mai		
A30	1	LS	726-510	Contractor-Supplied Temporary Pump	LUMP SUM	
A31	10	HR	726-520	Pumping Test		
A32	1	LS	726-530	Control of Rehabilitation Derived Waste	LUMP SUM	
A33	60	HR	726-540	Well Rehabilitation - Brushing		
A34	60	HR	726-550	Well Rehabilitation - Redevelopment		
A35	5000	FA	726-560	Well Rehabilitation - Force Account	\$1.00	\$5,000.00
A36	10	HR	726-600	Authorized Standby Time		
A37	1	LS	726-610	Records	LUMP SUM	
A38	870	LF	801-100	Silt Fence		
A39	1	LS	801-680	Erosion/Water Pollution Control	LUMP SUM	
A40	1	LS	803-505	Irrigation System	LUMP SUM	
A41	1	LS	805-510	Lawn and Landscape Restoration	LUMP SUM	
A42	2	EA	812-520	Chain Link Slide Gate		
A43	200	LF	812-610	Chain Link Fence Type 3 w/ Top Rail		
A44	6	EA	850-550	Bollard		
A45	1	LS	850-720	Well Pump and Motor	LUMP SUM	
A46	1	LS	850-725	Electrical	LUMP SUM	
A47	1	LS	850-730	Telemetry and Automatic Control	LUMP SUM	
A48	1	LS	850-792	Project Closeout	\$5,000.00	\$5,000.00
A49	1	LS	850-802	Standby Generator	LUMP SUM	
A50	1	LS	850-905	Treatment Facility	LUMP SUM	
A51	1	LS	850-910	Aeration System	LUMP SUM	
A52	1	LS	890-907	Decommission Well	LUMP SUM	

Schedule A Subtotal:

Tax Rate (%) : 9.50 Tax:

Schedule A Total:

Contract Total:

(All Schedules)

The undersigned also agrees as follows:

- Within 10 calendar days after the contract is awarded to sign and return the contract and provide insurance documents.
- That this proposal cannot be withdrawn within 45 days after receipt of bids.
- That it is the understanding that the City of Lacey may accept or reject any or all bids.
- The undersigned hereby agrees to pay for labor not less than the prevailing rates of wages per the bid documents.
- Enclosed with this proposal is a bid deposit in the sum of 5% of the bid total amount which it is agreed shall be collected and retained by the City of Lacey as liquidated damages in the event this proposal is accepted by the City of Lacey with 45 calendar days after the receipt of bids and the undersigned fails to execute the contract and the required bond with the City of Lacey, under the conditions thereof, within 10 calendar days after the undersigned is notified that said proposal has been accepted, otherwise said bid deposit shall be returned to the undersigned upon demand.
- A Performance/Payment Bond will be furnished to the City with the contract.
- Retention will be held on this contract per RCW 60.28.011.

Addenda Receipt Acknowledged

_____, _____, _____, _____, _____, _____

Signature of Bidder

Date

(If an Individual, Partnership, or Non-Incorporated organization)

Firm Name

Please Print

Phone

Address of Bidder: _____

Name and Address of Firm Members:

Signature of Bidder (if a Corporation)

Title: _____

Firm Name: _____

Phone: _____

Business Address: _____

Incorporated under the Laws of the State of _____

Officers

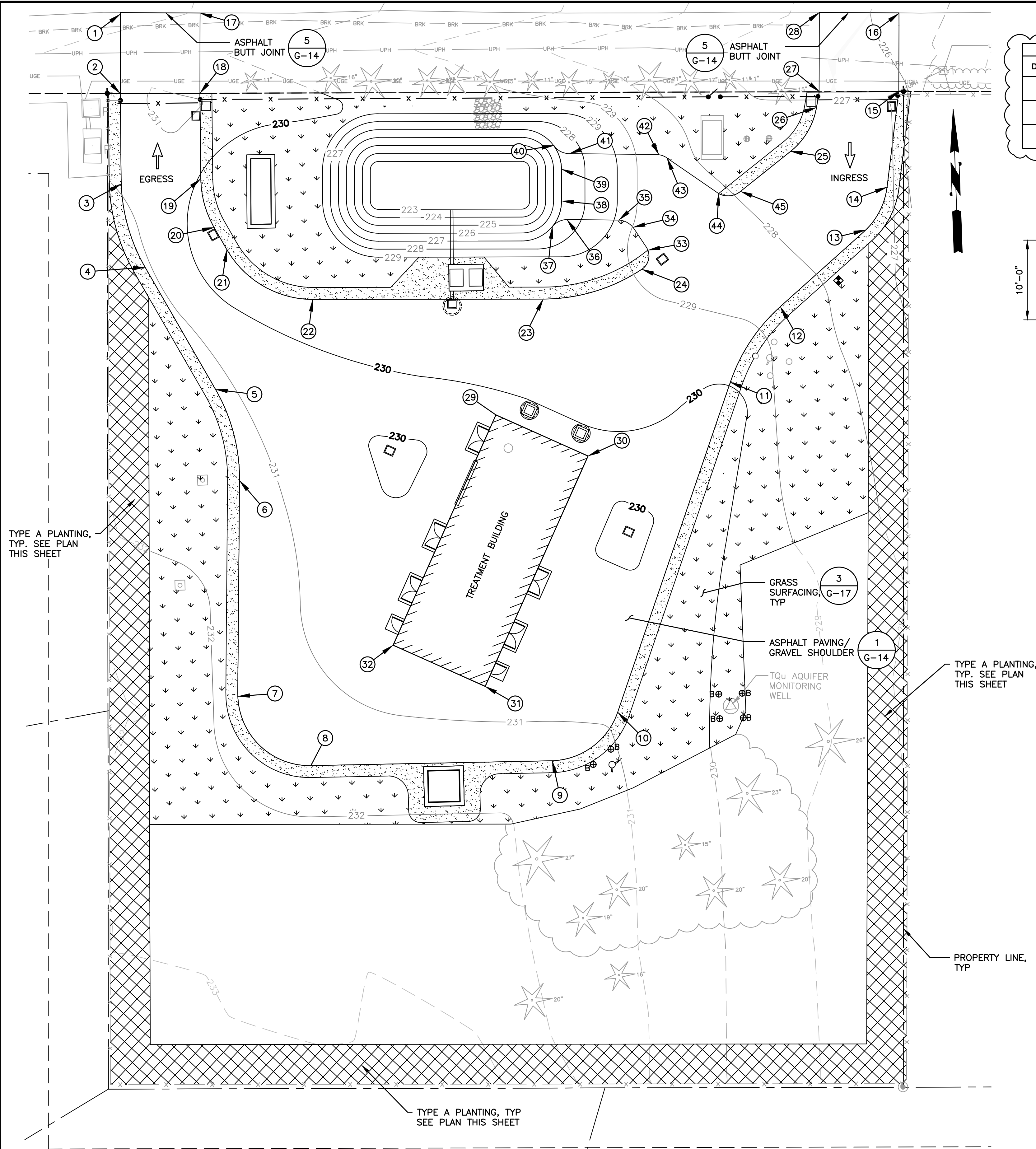
Address

President: _____

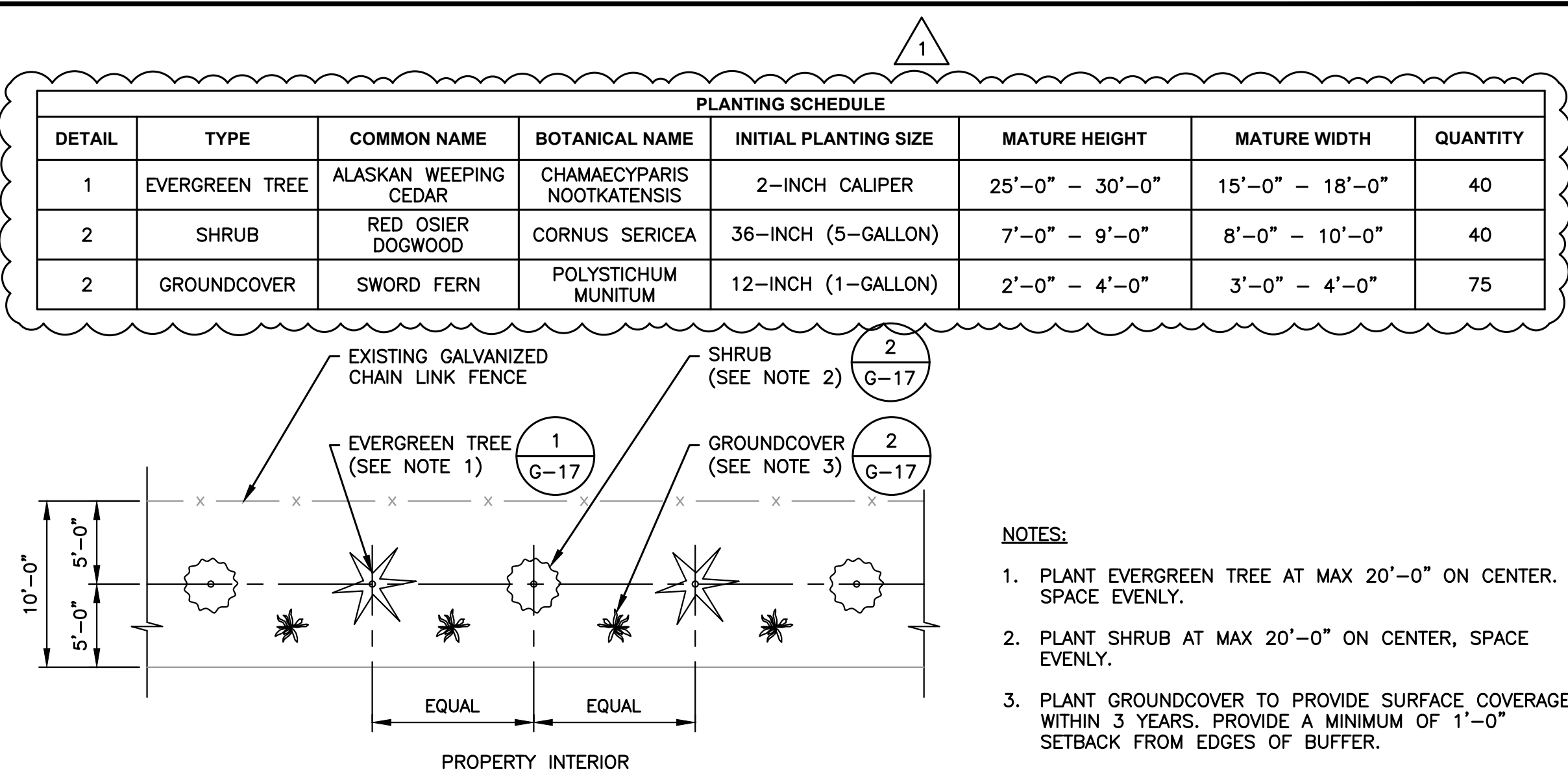
Secretary: _____

Treasurer: _____

L:\LACEY\19520 pH PreDesign and S17 Facilities Design\PLANSET\G-Sheets\Design\PLANSET\G_PRO_LSCP_P.dwg, 12/23/2022 2:13 PM, CHARLEY REID

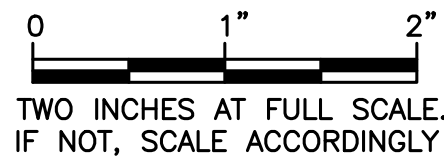


PROPOSED LANDSCAPING PLAN
SCALE: 1"=15'



SITE COORDINATE TABLE					
	NORTHING	EASTING	ELEVATION ±	DESCRIPTION	RADIUS
1	652642.78	79830.47	-	PAVEMENT EDGE, MATCH EXISTING ASPHALT EDGE	
2	652622.83	79829.76	230.7	PAVEMENT EDGE	
3	652600.13	79829.21	230.9	PAVEMENT EDGE	
4	652579.02	79834.47	231.1	PAVEMENT EDGE	
5	652547.73	79851.08	231.2	PAVEMENT EDGE	
6	652524.68	79856.30	231.3	PAVEMENT EDGE	
7	652470.52	79853.97	231.7	PAVEMENT EDGE	
8	652452.53	79871.70	231.8	PAVEMENT EDGE	
9	652451.63	79932.34	231.8	PAVEMENT EDGE	
10	652463.22	79949.17	230.9	PAVEMENT EDGE	
11	652545.06	79980.33	230.0	PAVEMENT EDGE	
12	652563.58	79993.53	228.6	PAVEMENT EDGE	
13	652582.06	80015.64	227.0	PAVEMENT EDGE	
14	652592.63	80021.38	226.8	PAVEMENT EDGE	
15	652616.54	80025.12	225.8	PAVEMENT EDGE	
16	652636.16	80025.93	-	PAVEMENT EDGE, MATCH EXISTING ASPHALT EDGE	
17	652642.33	79850.49	-	PAVEMENT EDGE, MATCH EXISTING ASPHALT EDGE	
18	652622.18	79849.75	230.8	PAVEMENT EDGE	
19	652600.75	79849.22	230.0	PAVEMENT EDGE	
20	652588.40	79852.13	229.6	PAVEMENT EDGE	
21	652569.48	79876.25	229.7	PAVEMENT EDGE	
22	652567.56	79934.10	229.5	PAVEMENT EDGE	
23	652576.42	79962.43	229.5	PAVEMENT EDGE	
24	652574.20	79959.10	228.6	PAVEMENT EDGE	
25	652602.50	79997.50	226.9	PAVEMENT EDGE	
26	652617.16	80005.27	226.8	PAVEMENT EDGE	
27	652636.86	80005.97	226.7	PAVEMENT EDGE	
28	652637.12	80005.97	-	PAVEMENT EDGE, MATCH EXISTING ASPHALT EDGE	
29	652527.78	79921.22	230.5	PAVEMENT EDGE AT BUILDING CORNER	
30	652527.78	79943.98	230.5	PAVEMENT EDGE AT BUILDING CORNER	
31	652470.89	79916.15	230.5	PAVEMENT EDGE AT BUILDING CORNER	
32	652482.02	79893.40	230.5	PAVEMENT EDGE AT BUILDING CORNER	
33	652579.70	79960.40	228.8	PAVEMENT EDGE	
34	652584.40	79957.50	229.0	PAVEMENT EDGE	
35	652586.70	79953.50	229.0	PAVEMENT EDGE	
36	652587.30	79940.70	227.5	PAVEMENT EDGE	
37	652585.60	79937.00	227.0	PAVEMENT EDGE	
38	652592.00	79939.60	227.0	PAVEMENT EDGE	
39	652600.00	79939.80	227.0	PAVEMENT EDGE	
40	652606.00	79938.10	227.0	PAVEMENT EDGE	
41	652603.80	79942.00	227.5	PAVEMENT EDGE	
42	652602.80	79963.70	228.6	PAVEMENT EDGE	
43	652601.90	79966.40	228.5	PAVEMENT EDGE	
44	652592.50	79979.10	228.2	PAVEMENT EDGE	
45	652592.80	79984.50	228.0	PAVEMENT EDGE	

* NORTHING AND EASTING VALUES FOR THE SURVEY CONTROL POINTS WERE NUMERICALLY EXTRAPOLATED FROM THEIR LOCATIONS IN THE SURVEY AND NOT PROVIDED DIRECTLY BY THE CITY. ALL NORTHING AND EASTING VALUES FOR SITE LOCATIONS IN THIS PLANSET ARE BASED ON THESE CALCULATED VALUES WHICH NEED TO BE VERIFIED BY THE CONTRACTOR BEFORE ANY SITE DEMOLITION OR STAKING IS PERFORMED.



Gray & Osborne, Inc.
CONSULTING ENGINEERS
1130 RAINIER AVENUE SOUTH, SUITE 300
SEATTLE, WASHINGTON 98144

DATE: NOV 2022	PGM	KPS	RLP
DRAWN:		CHECKED:	APPROVED:

12/23/2022	DATE	APPD
ADDENDUM NO. 4	REVISION	
1	No.	

PHILLIP STEWART
WASHINGTON
REGISTERED PROFESSIONAL ENGINEER
55780
12/21/22

RUSSELL L. PORTER
WASHINGTON
REGISTERED PROFESSIONAL ENGINEER
35688
12/21/22

CITY OF LACEY
THURSTON COUNTY WASHINGTON
BEACHCREST WELLFIELD pH IMPROVEMENTS
GRADING, LANDSCAPING, AND SURFACE RESTORATION PLAN

SHEET: **G-12**
SHEET: **12 of 81**
JOB NO.: 19520
DWG: G_PRO_LSCP_P