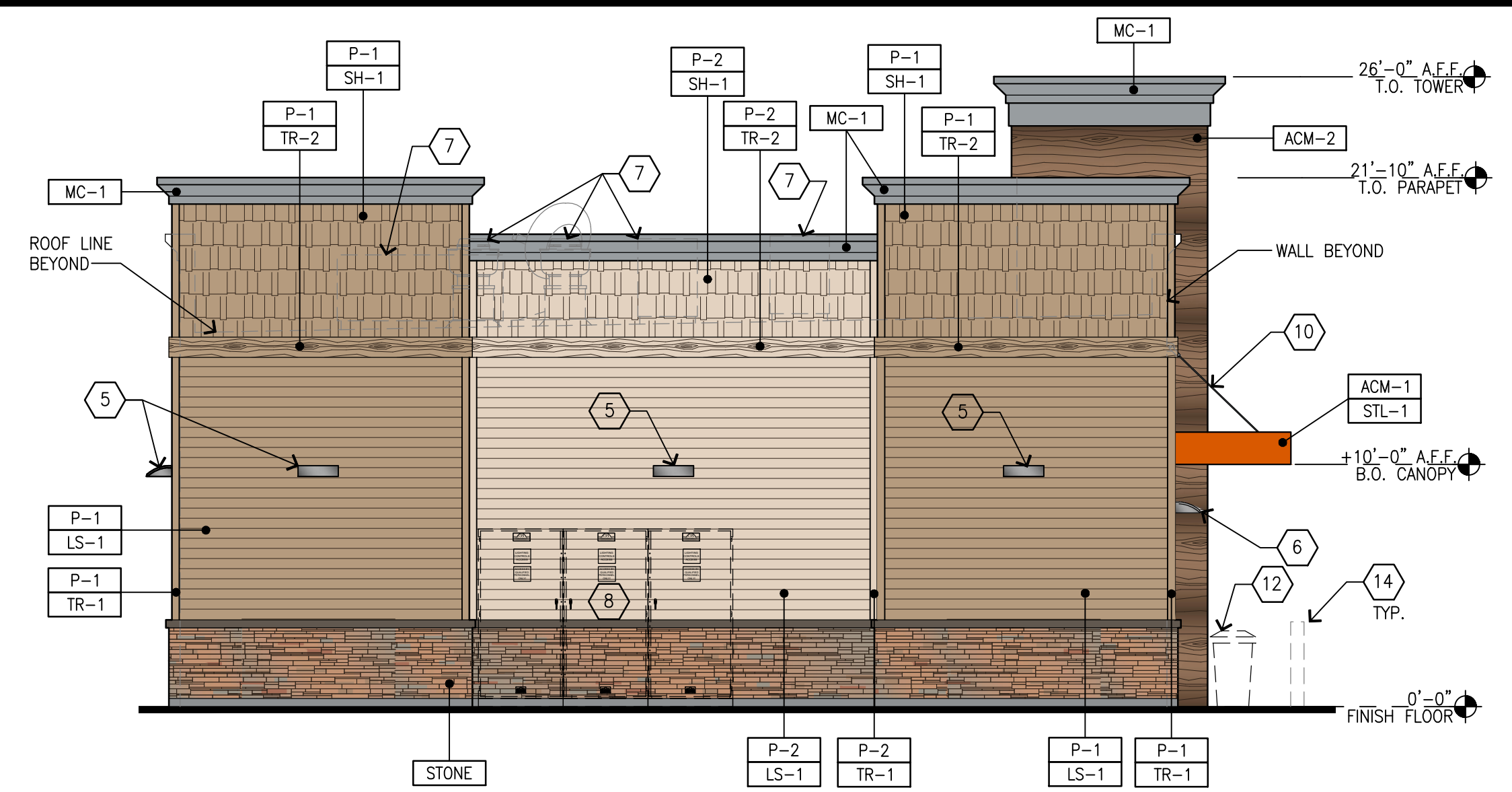
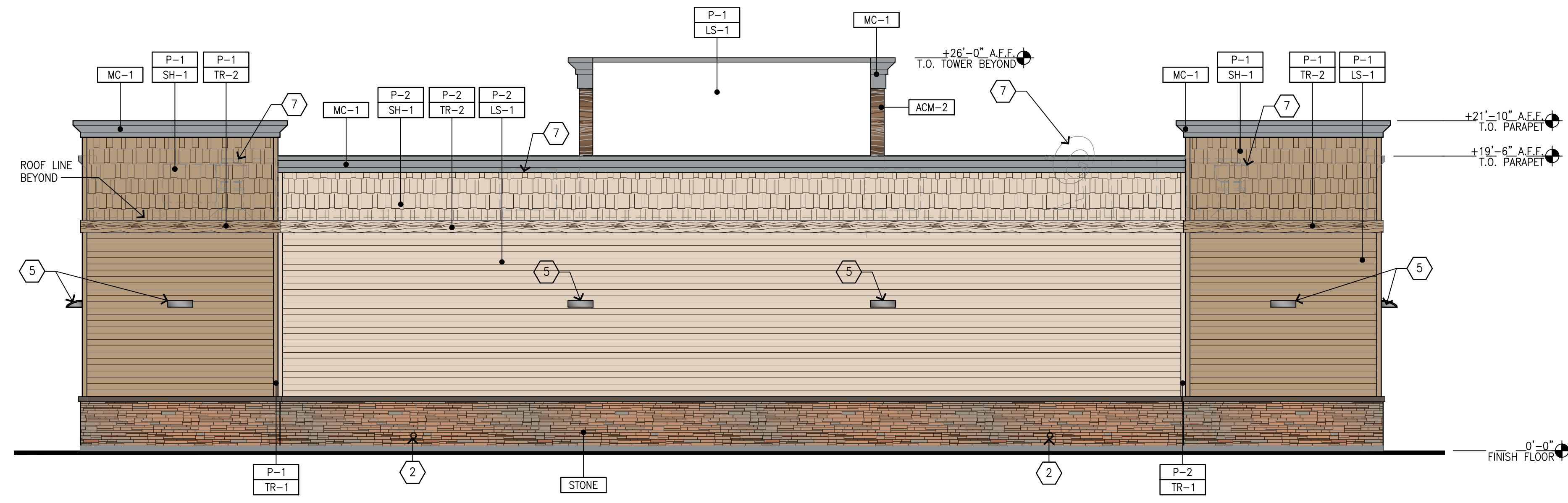




01 FRONT ELEVATION
SCALE: 3/16"=1'-0"



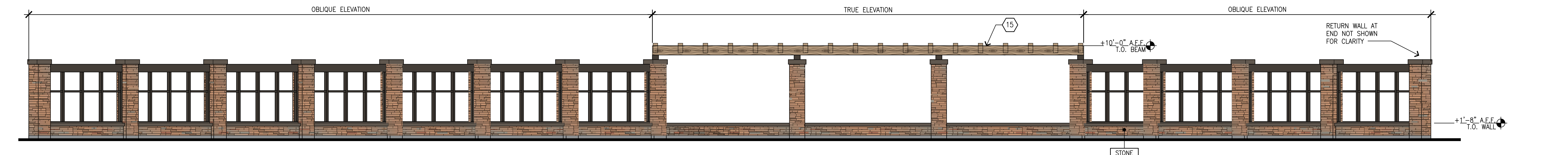
02 LEFT ELEVATION
SCALE: 3/16"=1'-0"



03 REAR ELEVATION
SCALE: 3/16"=1'-0"



04 RIGHT ELEVATION
SCALE: 3/16"=1'-0"



05 SOUTH-EAST ELEVATION - LANDSCAPE SCREEN WALL
SCALE: 3/16"=1'-0"

GENERAL NOTES

- A. REVEAL LOCATIONS IN FINISH SYSTEM SHOWN ARE TO ALIGN AS CLOSELY AS POSSIBLE TO ELEVATIONS.

KEYED NOTES

- 1 ALUMINUM ENTRANCE AND STOREFRONT SYSTEM, REFER TO SHEET A5.1 FOR SPECIFICATION
- 2 OVERFLOW DRAIN
- 3 1-1/2"x1-1/2" STEEL TUBE TRELLIS
- 4 LARGE INTERNALLY ILLUMINATED SURFACE MOUNTED WALL SIGN
- 5 WALL MOUNTED LED FIXTURE
- 6 WALL MOUNTED SIGN LIGHTING
- 7 ROOFTOP EQUIPMENT BEYOND
- 8 MAIN SWITCHGEAR
- 9 CO2 FILL/VENT BOX, VERIFY LOCATION PRIOR TO INSTALLATION
- 10 AWNING ROD AND CLEVIS, REFER TO SHEET A1.4 AND STRUCTURAL PLANS FOR DETAILS

- 11 CANOPY DOWNSPOUT PAINTED TO MATCH STOREFRONT, REFER TO CIVIL PLANS FOR CONTINUATION
- 12 TRADITIONAL CEMENT TRASH RECEPTACLE, REFER TO SHEET Q2.1 FOR SPECIFICATION
- 13 PORTABLE PROPANE TANK DISPLAY, REFER TO SHEET Q2.1 FOR SPECIFICATION
- 14 INSTALL 6"ø x 42" HIGH BOLLARD PROTECTION CENTERED ON STOREFRONT ENTRANCE, REFER TO SHEET A1.1
- 15 WOOD TRELLIS
- 16 MEDIUM INTERNALLY ILLUMINATED SURFACE MOUNTED WALL SIGN
- 17 WALL POSTER

COLOR LEGEND

- P-1 BENJAMIN MOORE, 1077 "GREAT PLAINS GOLD", SATIN FINISH
- P-2 BENJAMIN MOORE, 1030 "BRANDY CREAM", SATIN FINISH
- P-3 BENJAMIN MOORE, 2121-30 "PEWTER", HIGH GLOSS FINISH

MATERIAL LEGEND

- ACM-1 ALUMINUM COMPOSITE MATERIAL, PANTONE PMS 166c, "ORANGE"
- ACM-2 ALUMINUM COMPOSITE MATERIAL, ALUCOBOND, "RUSTIC WALNUT"
- STONE PANELIZED STONE VENEER (PROTOTYPE OPTION) MFR: CORONADO, SERIES: PRO-LEDGE COLOR: "ALASKAN SUNSET"
- ALUM CLEAR ANODIZED ALUMINUM
- STL-1 STEEL AWNING
- LS-1 LAP SIDING - JAMES HARDIE FIBER BOARD HARDIE PLANK LAP SIDING, SMOOTH 7.25" WIDTH, 6" EXPOSURE
- TR-1 TRIM OUTSIDE CORNERS & WAINSCOT CAP-JAMES HARDIE CEMENT FIBER BOARD HARDIE TRIM, SMOOTH, 5/4"x4"x12"
- TR-2 BELLY BAND @ 14"-3.5" TO BOTTOM - JAMES HARDIE CEMENT FIBER BOARD HARDIE TRIM, ROUGH TEXTURED, 5/4"x10"x12"
- SH-1 SHINGLE SIDING - JAMES HARDIE CEMENT FIBER BOARD HARDIESHINGLE SIDING, STAGGERED EDGE PANEL, ROUGH TEXTURED
- MC-1 PRE-FINISHED METAL CORNICE



Barghausen Consulting Engineers, Inc.

18215 72nd Avenue South
Kent, WA 98032
425.251.6222
barghausen.com

NO.	DATE	REVISION	DESCRIPTION

Not for Construction

DEVELOPMENT INFORMATION:
ARCO NTI
2900 am/pm
FUEL CANOPY w/ 6 MPD's

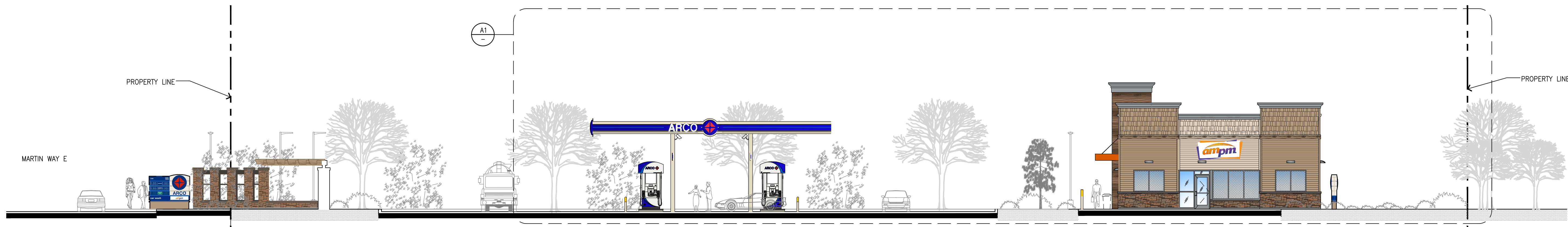
SITE ADDRESS:
1105 MARVIN ROAD NE
@ MARTIN WAY E
LACEY, WASHINGTON

FACILITY #TBD

DESIGNED BY: ALLIANCE ZADM:
CHECKED BY: BP REPA:
DRAWN BY: ALLIANCE PM:
VERSION: PROJECT NO:
- 22349

DRAWING TITLE:
EXTERIOR ELEVATIONS

SHEET NO:



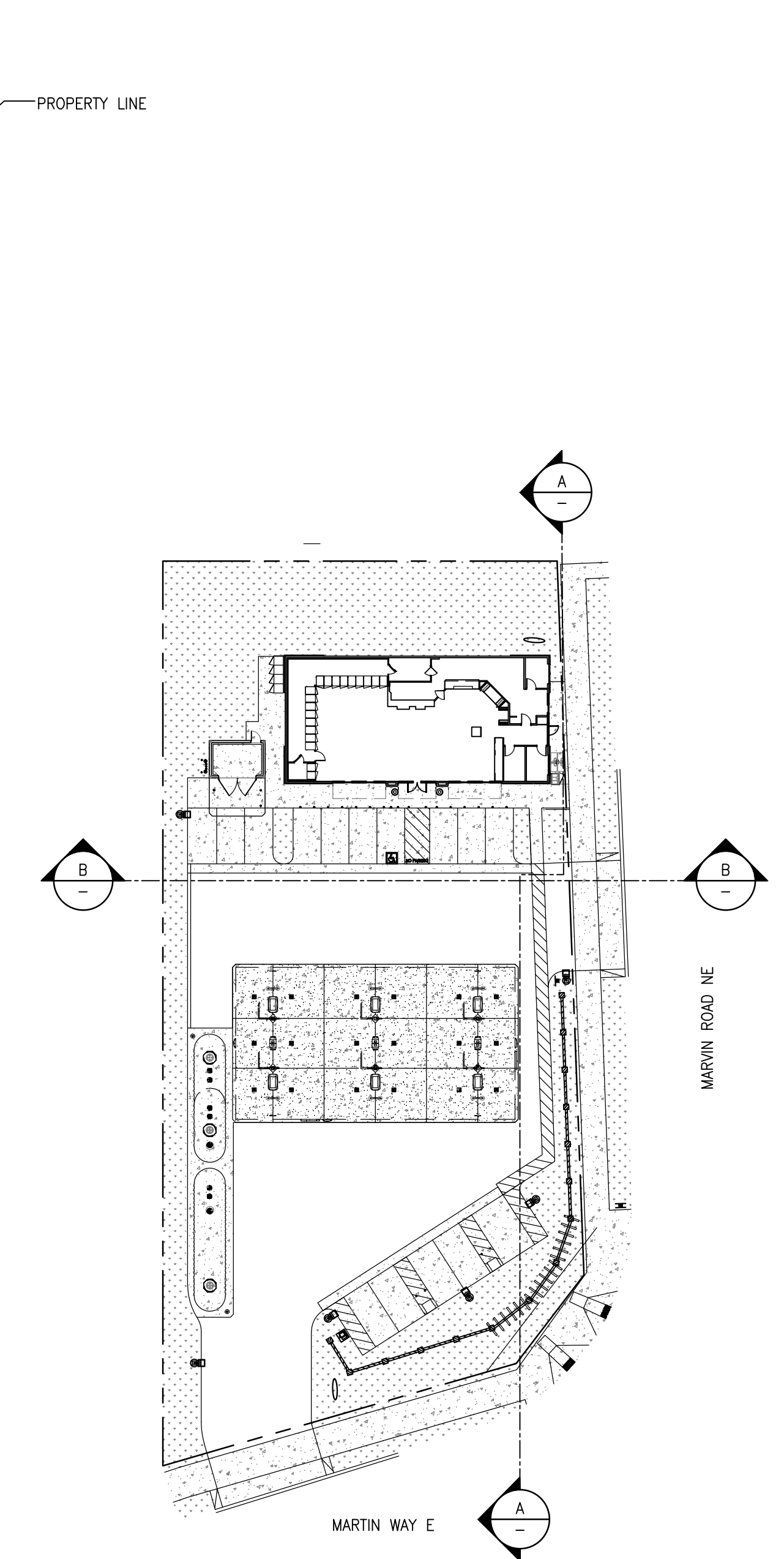
A LONGITUDINAL SECTION - SITE
SCALE: 3/32"=1'-0"



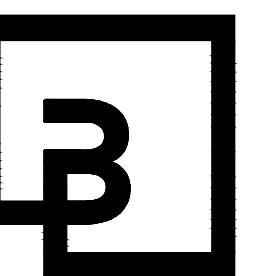
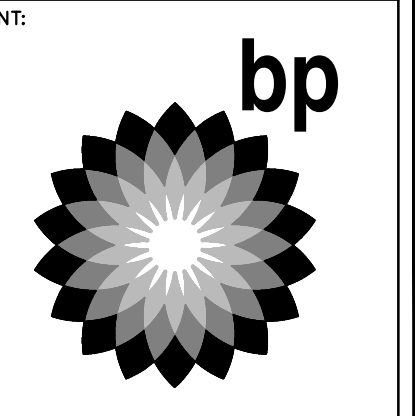
A1 ENLARGED LONGITUDINAL SECTION - SITE
SCALE: 1/8"=1'-0"



B CROSS SECTION - SITE
SCALE: 1/8"=1'-0"



C SITE KEY PLAN
SCALE: NTS



Barghausen Consulting Engineers, Inc.
18215 72nd Avenue South
Kent, WA 98032
425.251.6222
barghausen.com

NO.	DATE	REVISION DESCRIPTION

Not for Construction

DEVELOPMENT INFORMATION:
ARCO NTI
2900 am/pm
FUEL CANOPY w/ 6 MPD's

SITE ADDRESS:
1105 MARVIN ROAD NE
@ MARTIN WAY E
LACEY, WASHINGTON

FACILITY #TBD
DESIGNED BY: ALLIANCE ZADM:
CHECKED BY: BP REP:
DRAWN BY: ALLIANCE PM:
VERSION: PROJECT NO:
22349

DRAWING TITLE:
SITE SECTIONS

SHEET NO:

A2.2