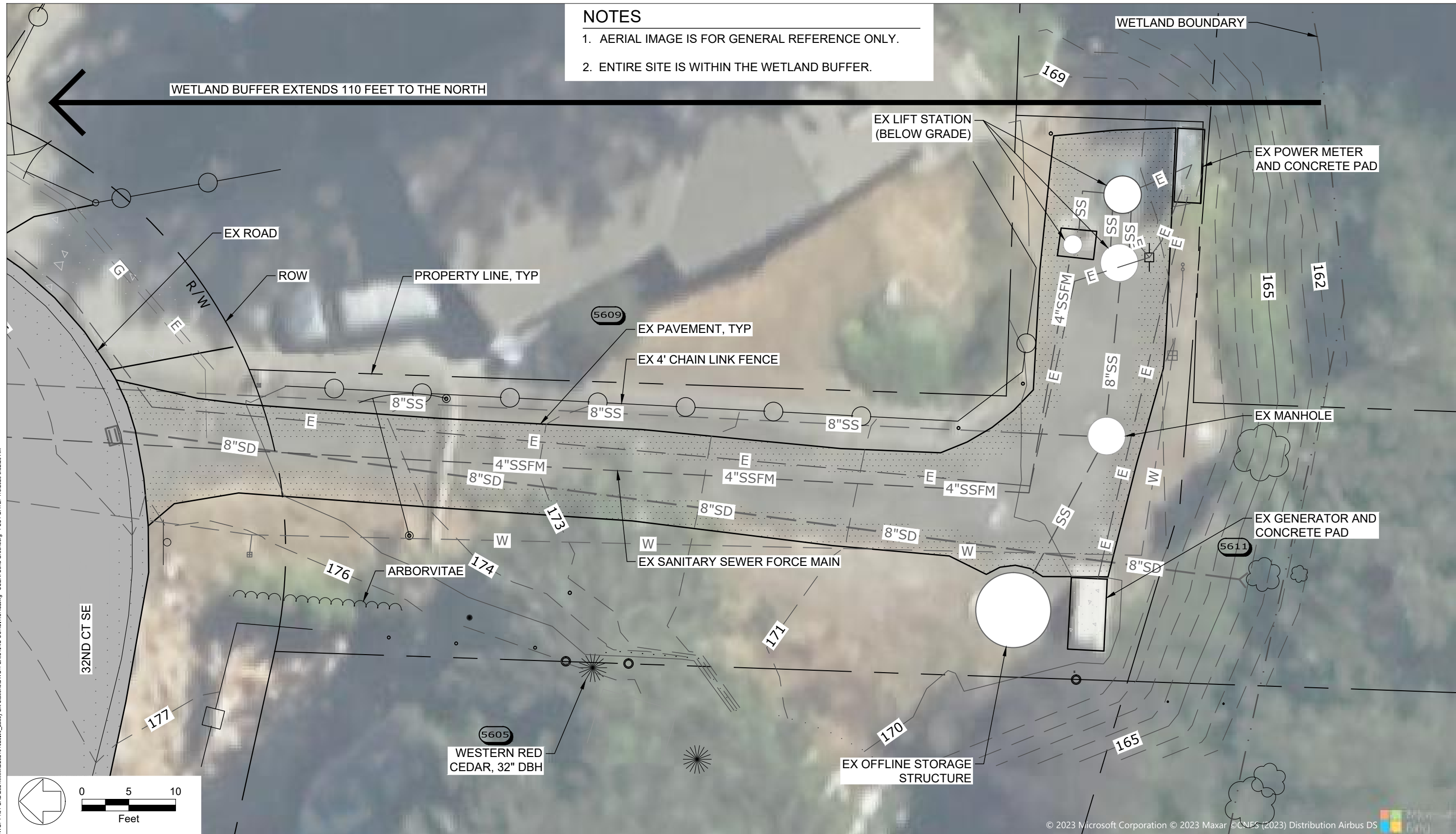
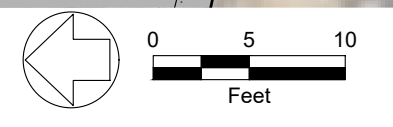


NOTES

1. AERIAL IMAGE IS FOR GENERAL REFERENCE ONLY.
2. ENTIRE SITE IS WITHIN THE WETLAND BUFFER.



DWG: P:01 CAD:2023xxxxx020211025:00_Lacey Lift Stations:DWG11 EXISTING CONDITIONS.dwg USER: Sonja Greenberg PLOT DATE: 7/6/2023 8:52:20 AM



© 2023 Microsoft Corporation © 2023 Maxar © CNES (2023) Distribution Airbus DS

Source: Microsoft 2023 (aerial), Consor 2023 (CAD base)

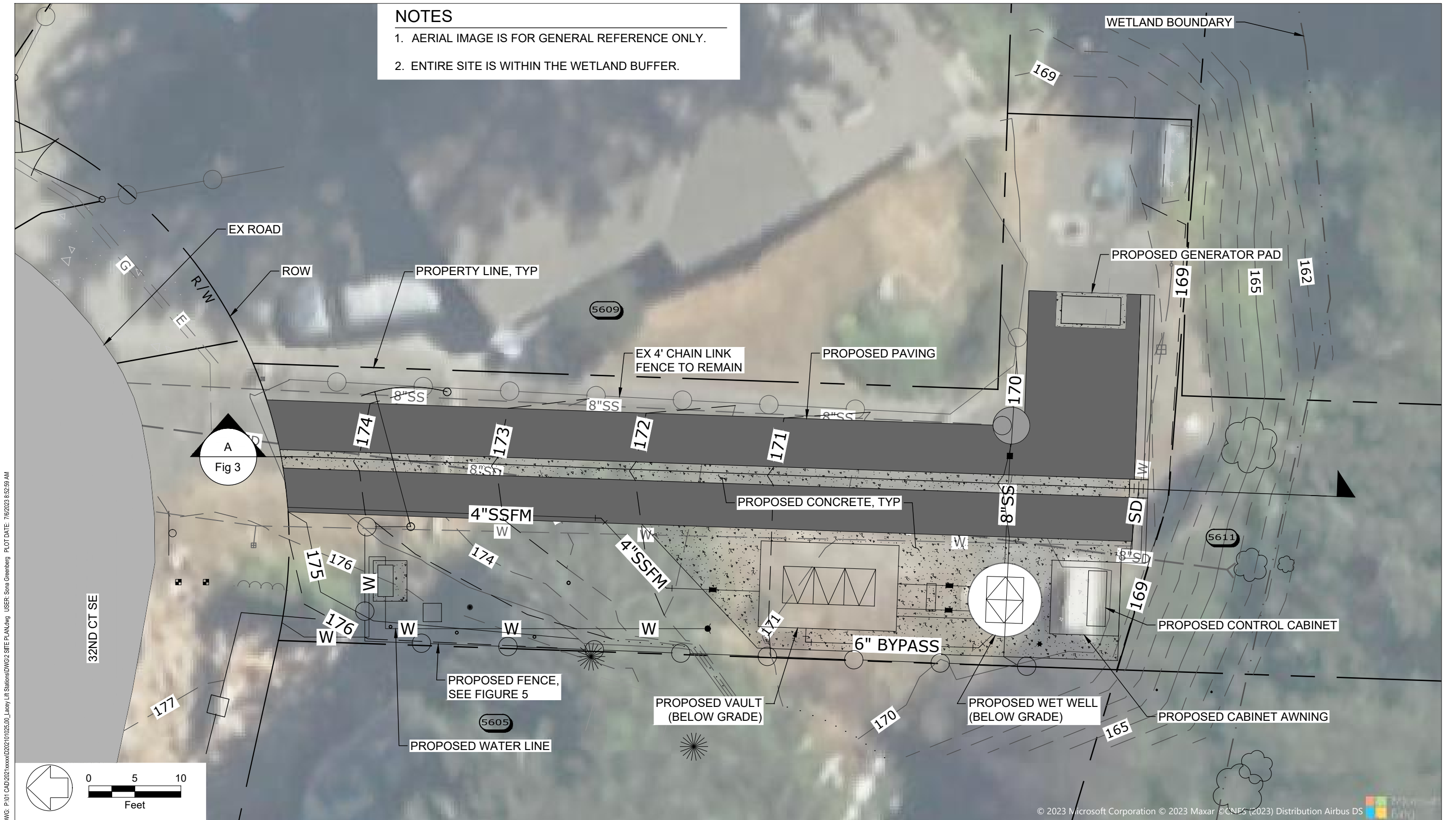
City of Lacey Lift Station 6 Rehabilitation

Figure 1
EXISTING CONDITIONS



NOTES

1. AERIAL IMAGE IS FOR GENERAL REFERENCE ONLY.
2. ENTIRE SITE IS WITHIN THE WETLAND BUFFER.



DWG: P:01 CAD:2023xxxxx020211025:00_Lacey Lift Stations:DWG:2 SITE PLAN.dwg USER: Soma Greenberg PLOT DATE: 7/6/2023 8:52:59 AM



© 2023 Microsoft Corporation © 2023 Maxar © CNES (2023) Distribution Airbus DS

Source: Microsoft 2023 (aerial), Consor 2023 (CAD base)

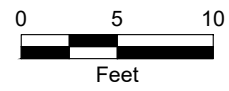
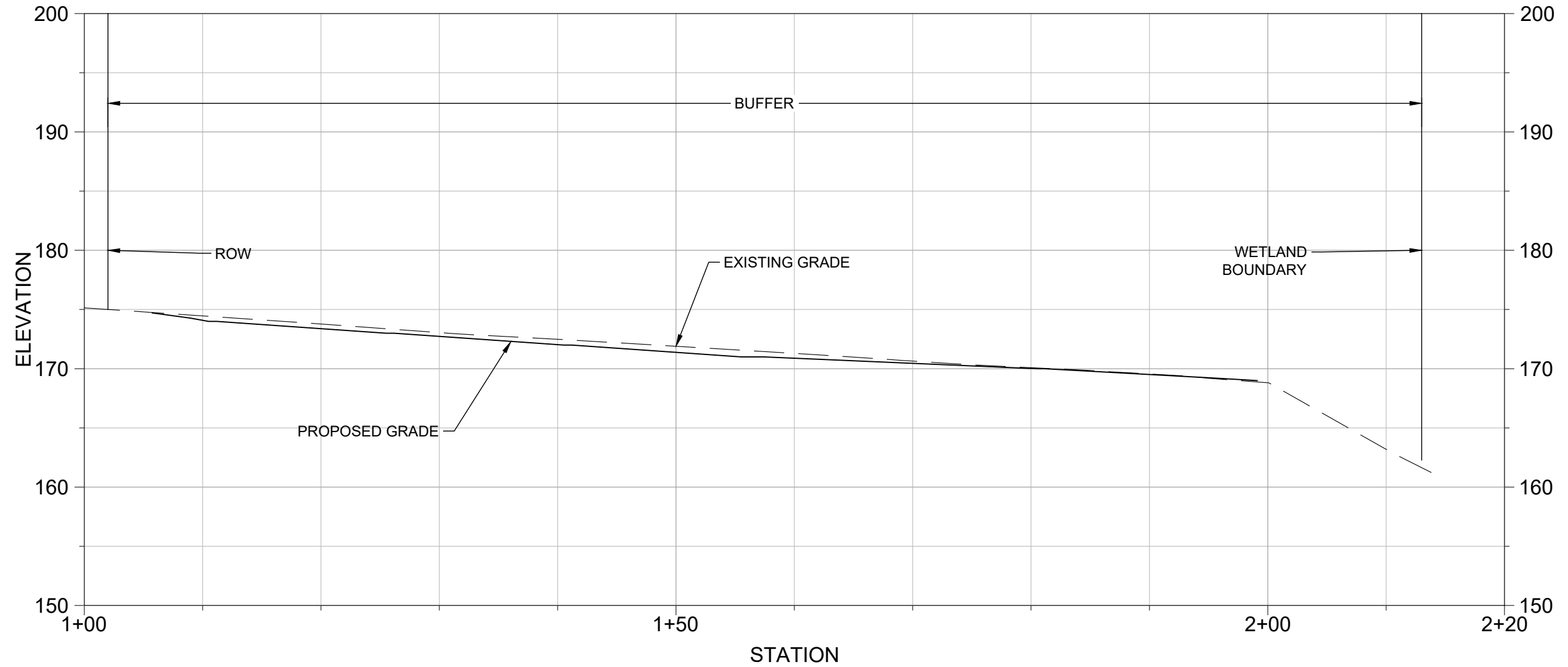
City of Lacey Lift Station 6 Rehabilitation

Figure 2
SITE PLAN



NOTES

- 1. ENTIRE SITE IS WITHIN THE WETLAND BUFFER.
- 2. MINOR CHANGES (<1 FOOT) TO GRADE PROPOSED FOR EXISTING DEVELOPED AREAS.



A SITE CROSS SECTION
Fig 2 SCALE: 1"=10"

DWG: P:01 CAD:021xxxxx020211025:00_Lacey Lift Stations:DWG:3 SITE CROSS SECTION.dwg USER: Sora Greenberg PLOT DATE: 7/6/2023 8:53:29 AM

Source: Microsoft 2023 (aerial), Consor 2023 (CAD base)

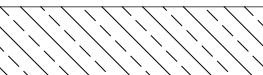
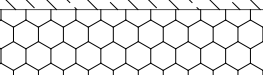

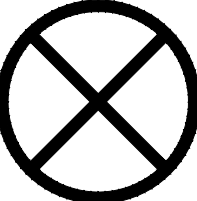
City of Lacey Lift Station 6 Rehabilitation

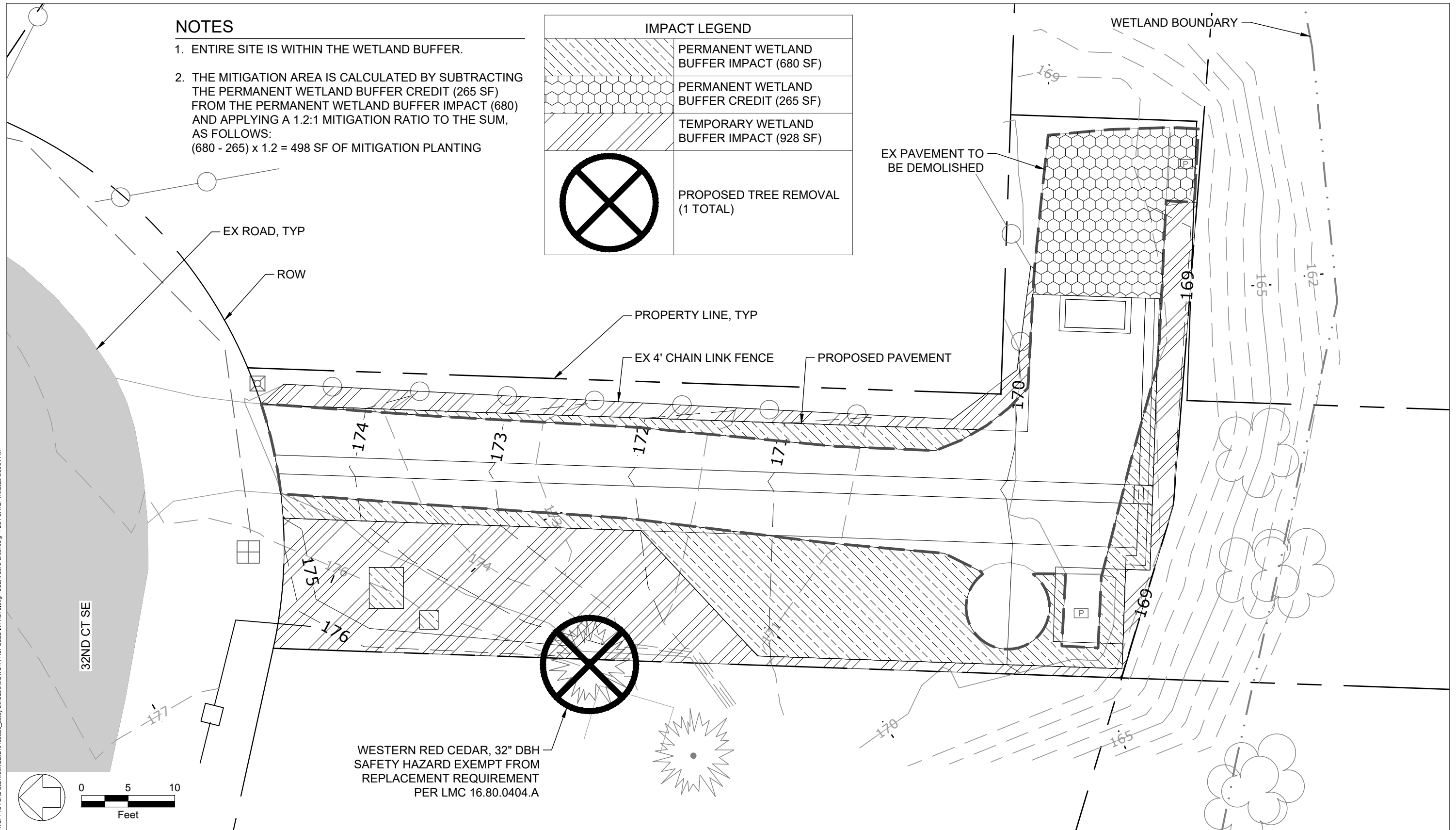
Figure 3
SITE CROSS SECTION



NOTES

1. ENTIRE SITE IS WITHIN THE WETLAND BUFFER.
2. THE MITIGATION AREA IS CALCULATED BY SUBTRACTING THE PERMANENT WETLAND BUFFER CREDIT (265 SF) FROM THE PERMANENT WETLAND BUFFER IMPACT (680) AND APPLYING A 1.2:1 MITIGATION RATIO TO THE SUM, AS FOLLOWS:
 $(680 - 265) \times 1.2 = 498$ SF OF MITIGATION PLANTING

IMPACT LEGEND	
	PERMANENT WETLAND BUFFER IMPACT (680 SF)
	PERMANENT WETLAND BUFFER CREDIT (265 SF)
	TEMPORARY WETLAND BUFFER IMPACT (928 SF)
	PROPOSED TREE REMOVAL (1 TOTAL)




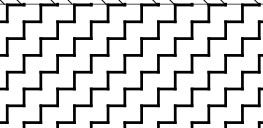
DWG: P:01 CAD:2023010211025:00_Lacey Lift StationsDWG4 PROPOSED IMPACTS.dwg USER: Sona Greenberg PLOT DATE: 7/6/2023 8:53:51 AM

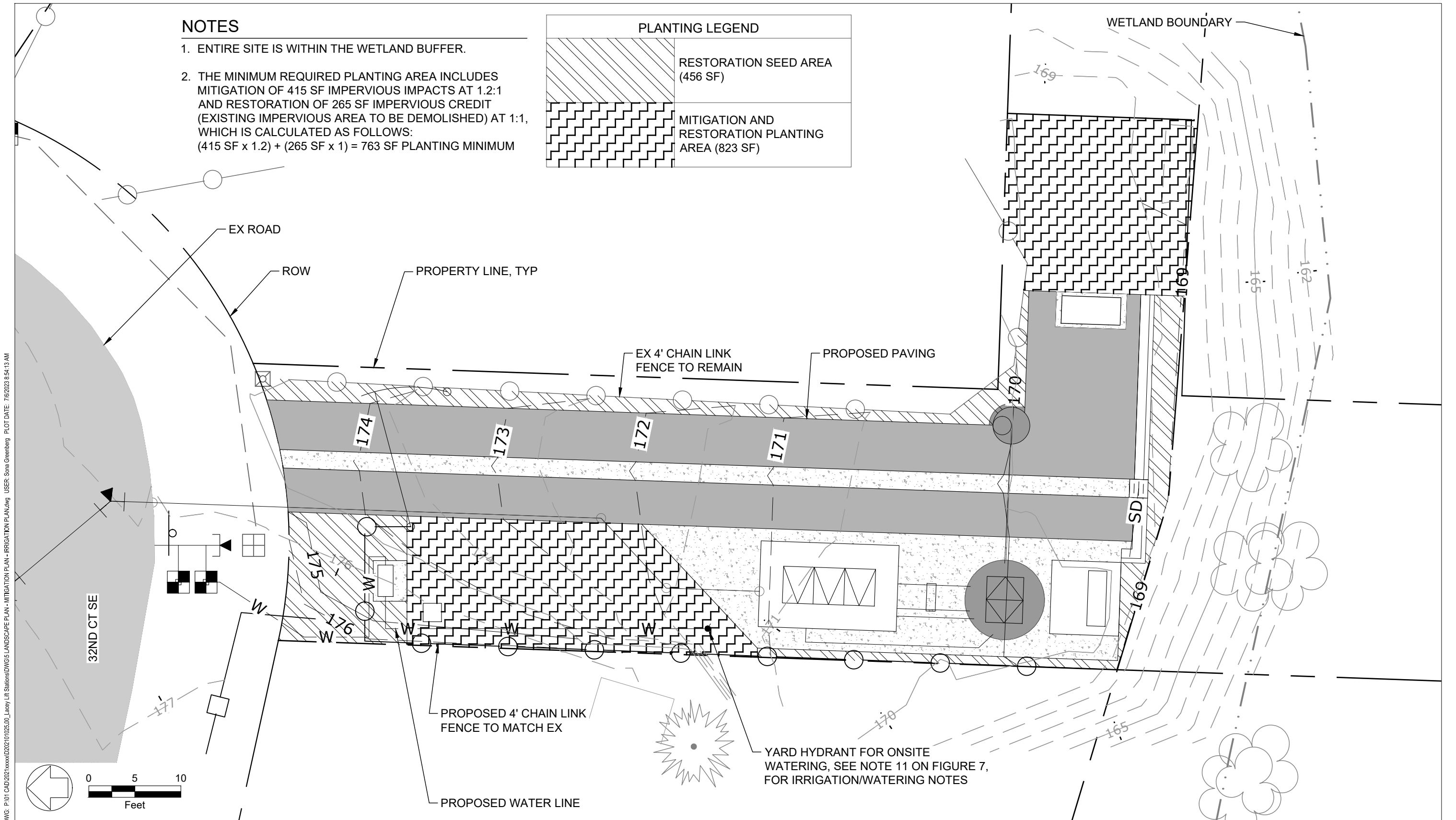
Figure 4
PROPOSED IMPACTS



NOTES

1. ENTIRE SITE IS WITHIN THE WETLAND BUFFER.
2. THE MINIMUM REQUIRED PLANTING AREA INCLUDES MITIGATION OF 415 SF IMPERVIOUS IMPACTS AT 1.2:1 AND RESTORATION OF 265 SF IMPERVIOUS CREDIT (EXISTING IMPERVIOUS AREA TO BE DEMOLISHED) AT 1:1, WHICH IS CALCULATED AS FOLLOWS:
 $(415 \text{ SF} \times 1.2) + (265 \text{ SF} \times 1) = 763 \text{ SF PLANTING MINIMUM}$

PLANTING LEGEND	
	RESTORATION SEED AREA (456 SF)
	MITIGATION AND RESTORATION PLANTING AREA (823 SF)



DWG: P:01 CAD:20210223 11:02:50 Lacey Lift Stations DWG 5 LANDSCAPE PLAN - MITIGATION PLAN - IRRIGATION PLAN - USER: Sora Greenberg PLOT DATE: 7/6/2023 8:54:13 AM

Figure 5
LANDSCAPE PLAN - MITIGATION PLAN - IRRIGATION PLAN



PLANTING SCHEDULE - MITIGATION PLANTING AREA (823 SF)

BOTANICAL NAME	COMMON NAME	TYPE	SIZE	SPACING	QUANTITY
ACER CIRCINATUM	VINE MAPLE	CONTAINER	1 GALLON	4' O.C.	8
GAULTHERIA SHALLON	SALAL	CONTAINER	1 GALLON	4' O.C.	8
MAHONIA AQUIFOLIUM	TALL OREGON GRAPE	CONTAINER	1 GALLON	4' O.C.	8
OEMLERIA CERASIFORMIS	OSOBERRY	CONTAINER	1 GALLON	4' O.C.	9
SALIX SCOULERIANA	SCOULER'S WILLOW	CONTAINER	1 GALLON	4' O.C.	9
SYMPHORICARPOS ALBUS	SNOWBERRY	CONTAINER	1 GALLON	4' O.C.	9
VACCINIUM OVATUM	EVERGREEN HUCKLEBERRY	CONTAINER	1 GALLON	4' O.C.	8

SEED MIX: SEED MIX 1, SEE SEED SCHEDULE, BELOW.

TOPSOIL: IMPORT ED TOPSOIL, SEE SOIL PREPARATION DETAIL, FIGURE 8.

MULCH: 3' DIAMETER MULCH RINGS, 3" DEPTH. SEE CONTAINER PLANTING DETAIL, FIGURE 8.

SEED MIX 1 SCHEDULE - CONTAINER PLANTING AREAS

BOTANICAL NAME	COMMON NAME	DISTRIBUTION BY WEIGHT	APPLICATION RATE
FESTUCA ROEMERI	ROEMER'S FESCUE	100%	1 LB. PER 1,000 SF (HAND SEEDING) 2 LBS. PER 1,000 SF (HYDROSEEDING)

SEED MIX 2 SCHEDULE - RESTORATION SEED AREA

BOTANICAL NAME	COMMON NAME	DISTRIBUTION BY WEIGHT	APPLICATION RATE
BROMUS CARINATUS	CALIFORNIA BROME	33%	1 LB. PER 1,000 SF (HAND SEEDING) 2 LBS. PER 1,000 SF (HYDROSEEDING)
ELYMUS GLAUCUS	BLUE WILDRYE	34%	
HORDEUM BRACHYANTHERUM	MEADOW BARLEY	33%	

DWG: P:101 CAD:2021xxxxx020211025:00_Lacey Lift StationsDWG6 PLANTING AND SEEDING SCHEDULES.dwg USER: Sana Greenberg PLOT DATE: 7/6/2023 9:10:17 AM

MITIGATION PLANTING NOTES

SCHEDULE

1. ALL SOIL DISTURBING ACTIVITIES WITHIN THE MITIGATION AREAS, INCLUDING BUT NOT LIMITED TO REMOVAL OF INVASIVE SPECIES, SHALL OCCUR BETWEEN OCTOBER 1 AND MARCH 1 UNLESS OTHERWISE APPROVED BY THE PROJECT BIOLOGIST OR UNLESS OTHERWISE REQUIRED BY STATE OR FEDERAL AGENCIES FOR PERMITS THAT MAY BE REQUIRED FOR PROJECT IMPLEMENTATION.
2. ALL WORK IN SATURATED SOILS AT ANY TIME OF THE YEAR OR DURING INCLEMENT WEATHER IS NOT ALLOWED WITHOUT APPROVAL BY THE PROJECT BIOLOGIST PRIOR TO EXECUTION, AND MAY REQUIRE USE OF TECHNIQUES AND EQUIPMENT DESIGNED TO MINIMIZE IMPACTS TO SATURATED SOILS OR ADJACENT AREAS OF STANDING WATER.
3. PLANTING OF WOODY MATERIAL SHOULD OCCUR BETWEEN OCTOBER 1 AND MARCH 1 TO TAKE ADVANTAGE OF SEASONAL RAINS AND GREATER AVAILABILITY OF PLANT MATERIAL. PLANTING DURING ABNORMALLY HOT, DRY, OR FREEZING WEATHER, OR AT TIMES OTHER THAN AS NOTED IS NOT ALLOWED WITHOUT PRIOR AUTHORIZATION BY THE PROJECT BIOLOGIST PRIOR TO IMPLEMENTATION AND MAY REQUIRE PLANT SUBSTITUTIONS AND SUPPLEMENTAL IRRIGATION.

CLEARING AND TREE PROTECTION

4. USING HAND-HELD EQUIPMENT, REMOVE ALL NON-NATIVE PLANT SPECIES FROM THE MITIGATION AREA PRIOR TO INSTALLATION. IF THE NON-NATIVE PLANT IS A THURSTON COUNTY NOXIOUS WEED FOLLOW THE METHODS APPROVED BY THE STATE OF WASHINGTON NOXIOUS WEED CONTROL BOARD.
5. PRESERVE AND PROTECT ALL EXISTING NATIVE TREES AND SHRUBS USING TEMPORARY FENCING AND FLAGGING. OWNER'S REPRESENTATIVE TO REMAIN ON SITE TO MONITOR WORK.
6. DO NOT DRIVE OR PARK ANY VEHICLES OR EQUIPMENT, STORE MATERIALS, STOCKPILE SOIL OR GRAVEL, OR DISPOSE OF ANY CONSTRUCTION OR WASTE MATERIAL WITHIN EXISTING BUFFERS OR NEAR NEWLY INSTALLED PLANTS. RESTRICT FOOT TRAFFIC WITHIN PROTECTED AREAS.

PLANT INSTALLATION

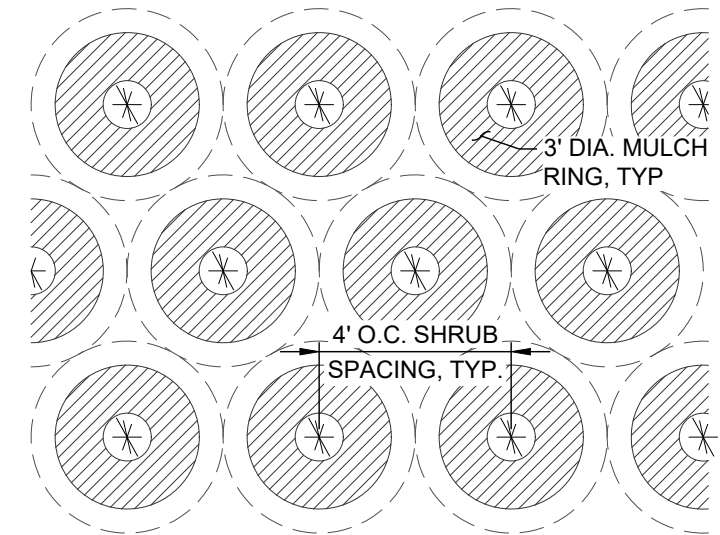
7. PLANTING SHALL OCCUR ACCORDING TO PREVIOUSLY DEFINED SCHEDULE. PLANTS SHALL BE INSTALLED IN COMPLIANCE WITH DETAILS IN THE PLANS.
8. EXACT LOCATIONS OF PLANTS MAY BE MODIFIED IN THE FIELD IF FOUND APPROPRIATE BY THE PROJECT BIOLOGIST OR LANDSCAPE ARCHITECT.
9. PLANTS SHALL BE INSTALLED SO FINISH GRADE IS LEVEL WITH THE TOP OF ROOT BALL. PLANTS SHALL BE BACKFILLED AND WATER-SETTLED. NO COMPACTION OR BACKFILL IS TO OCCUR AROUND PLANT. ALL PLANTS SHALL BE WATERED THOROUGHLY IMMEDIATELY FOLLOWING INSTALLATION.
10. NO TREES OR SHRUBS SHALL BE PLANTED IN STANDING WATER.

MAINTENANCE

11. INSTALL TEMPORARY IRRIGATION OR HAND WATER USING ONSITE WATER LINE. ENSURE 1" PER WEEK WATERING OF ALL PLANTING AREAS DURING THE DRY SEASON FOR YEARS 1 AND 2.

MONITORING - PERFORMANCE STANDARDS

12. PERCENT COVER OF NATIVE SHRUBS (INSTALLED AND VOLUNTEER) WITHIN BUFFER ENHANCEMENT AREA:
 - YEAR 1: 100%
 - YEAR 2: >60%
 - YEAR 3: >80%
13. PERCENT COVER OF NOXIOUS WEEDS WITHIN BUFFER ENHANCEMENT AREA (THROUGHOUT THE MONITORING AND MAINTENANCE PERIOD):
 - HIMALAYAN BLACKBERRY, ENGLISH IVY, BINDWEED, ENGLISH HOLLY, AND REED CANARY GRASS IN YEARS 1 THROUGH 3: 20% OR LESS
 - THURSTON COUNTY CLASS A AND B NOXIOUS WEEDS: 10% OR LESS
 - THURSTON COUNTY CLASS C NOXIOUS WEEDS: 20% OR LESS

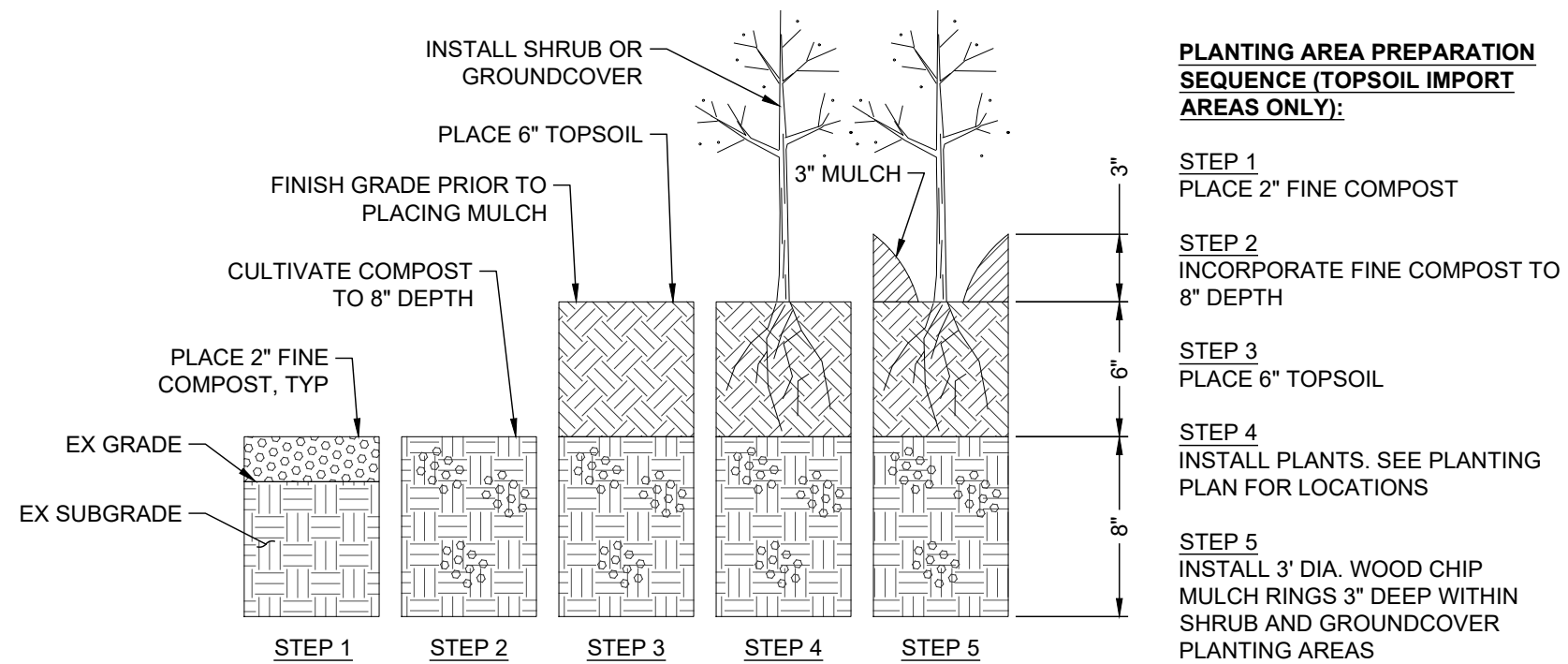


NOTES:

1. MITIGATION PLANTING LAYOUT IS CONCEPTUAL AND INTENDED TO SHOW GROUPINGS OF SIMILAR SPECIES OF PLANTS.
2. GROUP EACH SPECIES IN CLUSTERS OF 3, 5, 7, OR 9.
3. PLANT LAYOUT AND TRIANGULAR SPACING MAY BE ADJUSTED TO MEET FIELD CONDITIONS WITH THE ACCEPTANCE OF THE ENGINEER.

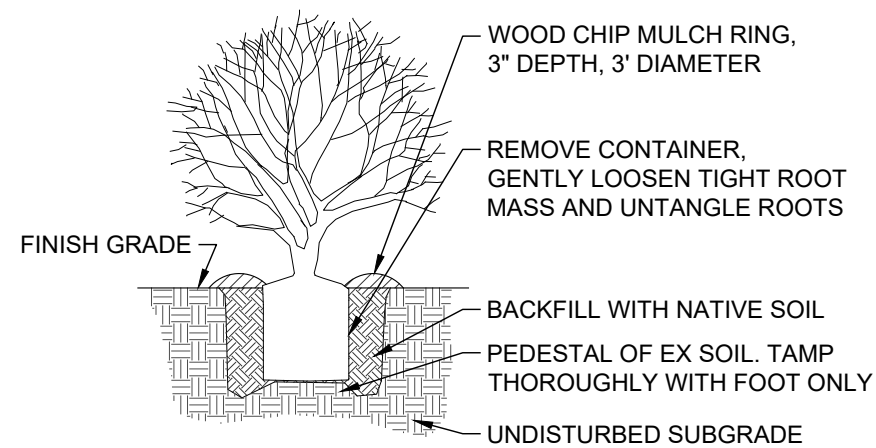
1	PLANTING LAYOUT	
-	DETAIL	SCALE: NTS

DWG: P-101 CAD:2021xxxxx020211025:00_Lacey Lift Stations:DWG:8 MITIGATION PLANTING DETAILS:DWG: USER: Sonia Greenberg PLOT DATE: 7/6/2023 8:54:53 AM



2 SOIL PREPARATION
- DETAIL

SCALE: NTS



3 CONTAINER PLANTING
- DETAIL

SCALE: NTS