

CAPITOL CITY GOLF COURSE STORMWATER IMPROVEMENTS

LACEY CONTRACT # PW 2023-21
SECTION 04, T17N, R1W, W.M.

LACEY CITY OFFICIALS

MAYOR: Andy Ryder

DEPUTY MAYOR: Malcolm Miller

CITY COUNCIL: Lenny Greenstein
Michael Steadman
Carolyn Cox
Ed Kunkel
Robin Vazquez

CITY MANAGER: Rick Walk

CITY ATTORNEY: David S. Schneider

CITY ENGINEER: Aubrey Collier, P.E., S.E.

DIRECTOR OF
PUBLIC WORKS: Scott Egger, P.E.

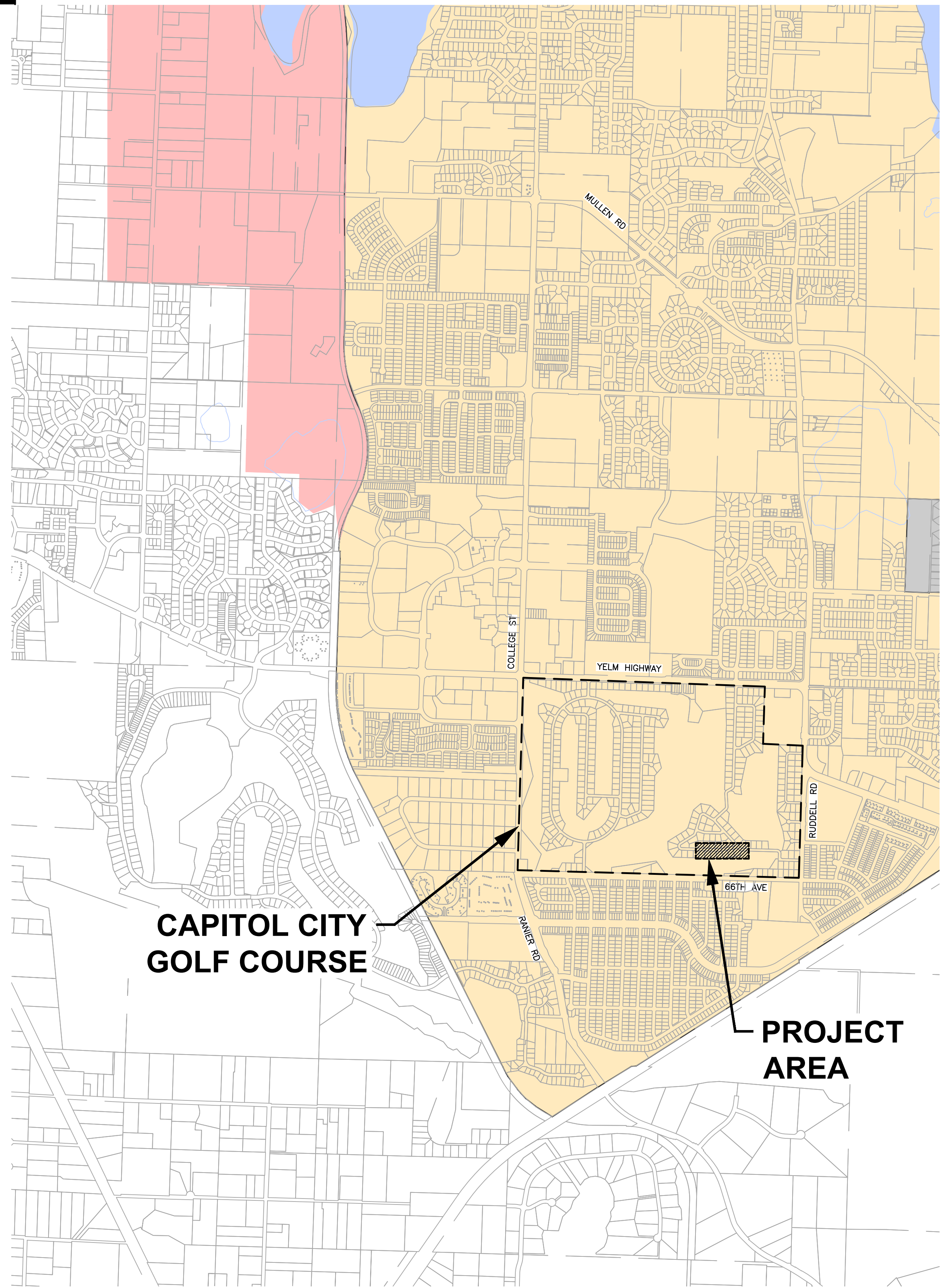
INDEX OF DRAWINGS

GENERAL

1	G1	COVER SHEET, VICINITY MAP & INDEX OF DRAWINGS
2	G2	GENERAL NOTES, ABBREVIATIONS & LEGEND
3	G3	AREA MAP
4	EC1	DEMOLITION & EROSION CONTROL
5	EC2	EROSION CONTROL DETAILS
6	SP1	OVERALL SITE PLAN

ROADWAY & DRAINAGE

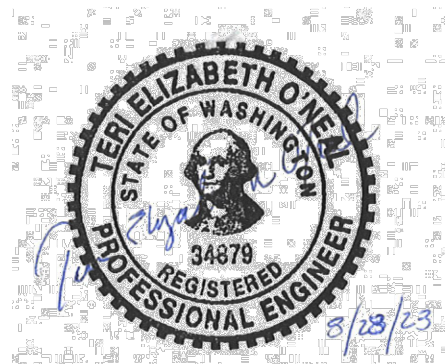
7-8	RP1-RP2	ROADWAY PLAN & PROFILE - 1 & 2
9-10	DP1-DP2	DRAINAGE PLAN & PROFILE - 1 & 2



VICINITY MAP
CITY OF LACEY, WASHINGTON
SCALE : 1" = 1000'



	LACEY CITY LIMITS
	OLYMPIA CITY LIMITS
	URBAN GROWTH AREA



Lacey Dwg. Number :
D-23-14

BLOCK LEGEND		NEW	EXISTING
	SURVEY MONUMENT		
	CATCH BASIN TYPE 1		
	STORM MANHOLE & CB TYPE 2		
	FIRE HYDRANT		
	AIR & VACUUM RELEASE VALVE		
	WATER METER		
	WATER VALVE		
	REDUCER		
	SPRINKLER HEAD		
	SEWER MANHOLE		
	SANITARY SEWER CLEAN OUT		
	GAS VALVE		
	SIGN		
	POLE ANCHOR		
	POWER TRANSFORMER		
	POWER POLE		
	POWER VAULT		
	TRAFFIC LOOP		
	TRAFFIC SIGNAL		
	STANDARD TRAFFIC SIGNAL CONTROLLER		
	STREET LIGHT		
	JUNCTION BOX		
	ELECTRICAL SERVICE		
	CABLE TV PEDESTAL		
	TELEPHONE MANHOLE		
	TELEPHONE PEDESTAL		
	TREE GRATE		
	COMMERCIAL SIGN		

LINETYPE LEGEND	
	CONSTRUCTION BASELINE
	EASEMENT
	ROAD CENTERLINE
	BARB WIRE FENCE
	CHAIN LINK FENCE
	CONCRETE FENCE
	ROCK FENCE
	WIRE FENCE
	WOOD FENCE
	GRAVEL
	TOE OF SLOPE
	TOP OF SLOPE
	DITCH
	STORM (PAINTED)
	NEW STORM
	SEWER (PAINTED)
	NEW SEWER
	NEW SEWER SERVICE
	RIGHT OF WAY
	OVERHEAD CABLE
	UNDERGROUND CABLE (PAINTED)
	GAS (PAINTED)
	OVERHEAD PHONE
	OVERHEAD FIBER OPTIC
	UNDERGROUND PHONE (PAINTED)
	UNDERGROUND FIBER OPTIC (PAINTED)
	OVERHEAD ELECTRIC
	UNDERGROUND ELECTRIC (PAINTED)
	WATER (PAINTED)
	NEW WATER
	NEW WATER SERVICE
	RECLAIMED WATER (PAINTED)
	ABANDON EXISTING UTILITY (SEE PLAN)
	LOT NUMBER
	HOUSE ADDRESS

ABBREVIATIONS	
	DEFLECTION ANGLE
EP	EDGE OF PAVEMENT
RT	RIGHT
LT	LEFT
I.E.	INVERT ELEVATION
P.C.	POINT OF CURVATURE
P.I.	POINT OF INTERSECTION
P.T.	POINT OF TANGENCY
R.	RADIUS
R.P.	RADIUS POINT
R/W	RIGHT-OF-WAY
ROW	RIGHT-OF-WAY
EX.	EXISTING
EXIST.	EXISTING
STA	STATION
STM	STORM
S/W	SIDEWALK
C.S.B.C.	CRUSHED SURFACING BASE COURSE
C.S.T.C.	CRUSHED SURFACING TOP COURSE
CL, C	CENTERLINE
CB	CATCH BASIN
N/A	NOT APPLICABLE
A/C	ASPHALT CONCRETE
ACP	ASPHALT CONCRETE PAVEMENT
D.I.	DUCTILE IRON
SD	STORM DRAIN
SS	SANITARY SEWER
RPBA	REDUCED PRESSURE BACKFLOW ASSEMBLY
DIA, Ø	DIAMETER
A.P.	ANGLE POINT
V.P.I.	VERTICAL POINT OF INTERSECTION
V.P.C.	VERTICAL POINT OF CURVATURE

V.P.T.	VERTICAL POINT OF TANGENCY
EL.	ELEVATION
S.Y.	SQUARE YARD
C.Y.	CUBIC YARD
TYP.	TYPICAL
LUM.	LUMINAIRE
L.F.	LINEAR FEET
RD.	ROAD
DR.	DRIVE
PKWY.	PARKWAY
CONST.	CONSTRUCTION
FT.	FOOT
D/W	DRIVEWAY
APPROX.	APPROXIMATELY
U.O.N.	UNLESS OTHERWISE NOTED

CONSTRUCTION NOTES:

- CALL 48 HOURS BEFORE YOU DIG 1-800-424-5555 OR 811.
- CONTRACTOR SHALL NOT REMOVE ANY TREES UNLESS INDICATED ON PLANS OR DIRECTED BY ENGINEER.
- CONTRACTOR SHALL MATCH OVERLAY TO EXISTING PAVEMENT AND DRIVEWAYS AS DIRECTED BY THE ENGINEER.
- GRINDING LIMITS AND PAVEMENT REPAIR LIMITS SHALL BE IDENTIFIED BY THE ENGINEER IN THE FIELD AND MAY VARY FROM THOSE SHOWN ON THE PLANS.
- THE CONTRACTOR SHALL VERIFY QUANTITIES OF VALVE BOX AND MANHOLE COVERS TO BE RAISED OR ADJUSTED PRIOR TO PAVING OPERATIONS.
- THE CONTRACTOR SHALL VERIFY VALVE BOX AND MANHOLE COVER DIMENSIONS AS WELL AS REQUIRED ADJUSTMENT HEIGHTS OF THE PAVING RISERS TO MATCH FINAL OVERLAY GRADES.
- THE CONTRACTOR SHALL RESTORE ALL LANDSCAPING TO EQUAL OR BETTER THAN ORIGINAL CONDITIONS AS DIRECTED BY THE ENGINEER.
- THE CONTRACTOR SHALL PROTECT ALL EXISTING SURVEY MONUMENTS AND PROPERTY CORNERS. THE CONTRACTOR SHALL BE RESPONSIBLE FOR ALL COSTS ASSOCIATED WITH RESTORING MONUMENTS OR PROPERTY CORNERS OUTSIDE OF THE CONSTRUCTION LIMITS.

SURVEY NOTE:

PROPERTY CORNERS HAVE BEEN LOCATED AND FLAGGED UP. IT IS THE RESPONSIBILITY OF THE CONTRACTOR TO PROTECT THE LOCATION OF THESE PROPERTY CORNERS. IF A PROPERTY CORNER IS IN DANGER OF BEING DISTURBED THEN THE CONTRACTOR SHALL INFORM THE CITY OF LACEY INSPECTOR. THOSE CORNERS WILL BE REFERENCE TO BE REPLACED.

TOPOGRAPHIC NOTE:

THE EXISTING TOPOGRAPHIC DATA SHOWN ON THESE DRAWINGS, IN PART, IS BASED UPON INFORMATION FROM VARIOUS SOURCES. WHILE THIS INFORMATION IS BELIEVED TO BE RELIABLE, THE CITY OF LACEY CANNOT ENSURE ITS ACCURACY AND THUS IS NOT RESPONSIBLE FOR THE ACCURACY OF THAT INFORMATION OR FOR ANY ERRORS OR OMISSIONS WHICH MAY HAVE BEEN INCORPORATED INTO THESE DRAWINGS AS A RESULT.

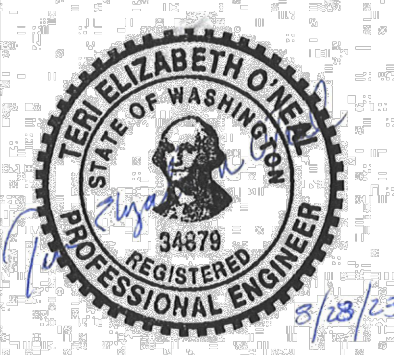
THE CONTRACTOR SHALL BE FULLY RESPONSIBLE FOR THE LOCATION AND PROTECTION OF ALL EXISTING UTILITIES. THE CONTRACTOR SHALL VERIFY ALL UTILITY LOCATIONS PRIOR TO CONSTRUCTION BY CALLING THE UNDERGROUND LOCATE LINE AT 811 A MINIMUM OF 48 HOURS PRIOR TO ANY EXCAVATION.



VERTICAL DATUM
CITY OF LACEY BM#1701
SURVEY MARKER NAIL IN ASPH AT
NE QUAD OF SARAZEN ST SE AND
58TH AVE SE 2' SE OF STOP SIGN
ELEV.=193.50

The Topographic Survey depicts the physical features that were visible at the time of the survey. The City of Lacey is not responsible for the location of underground utilities that are marked or not marked in the field by other utility providers. All feature locations should be independently verified prior to design or construction.

CITY OF LACEY, WASHINGTON
DEPARTMENT OF PUBLIC WORKS
420 COLLEGE STREET SE
LACEY, WA 98503-1238 (360) 491-5600

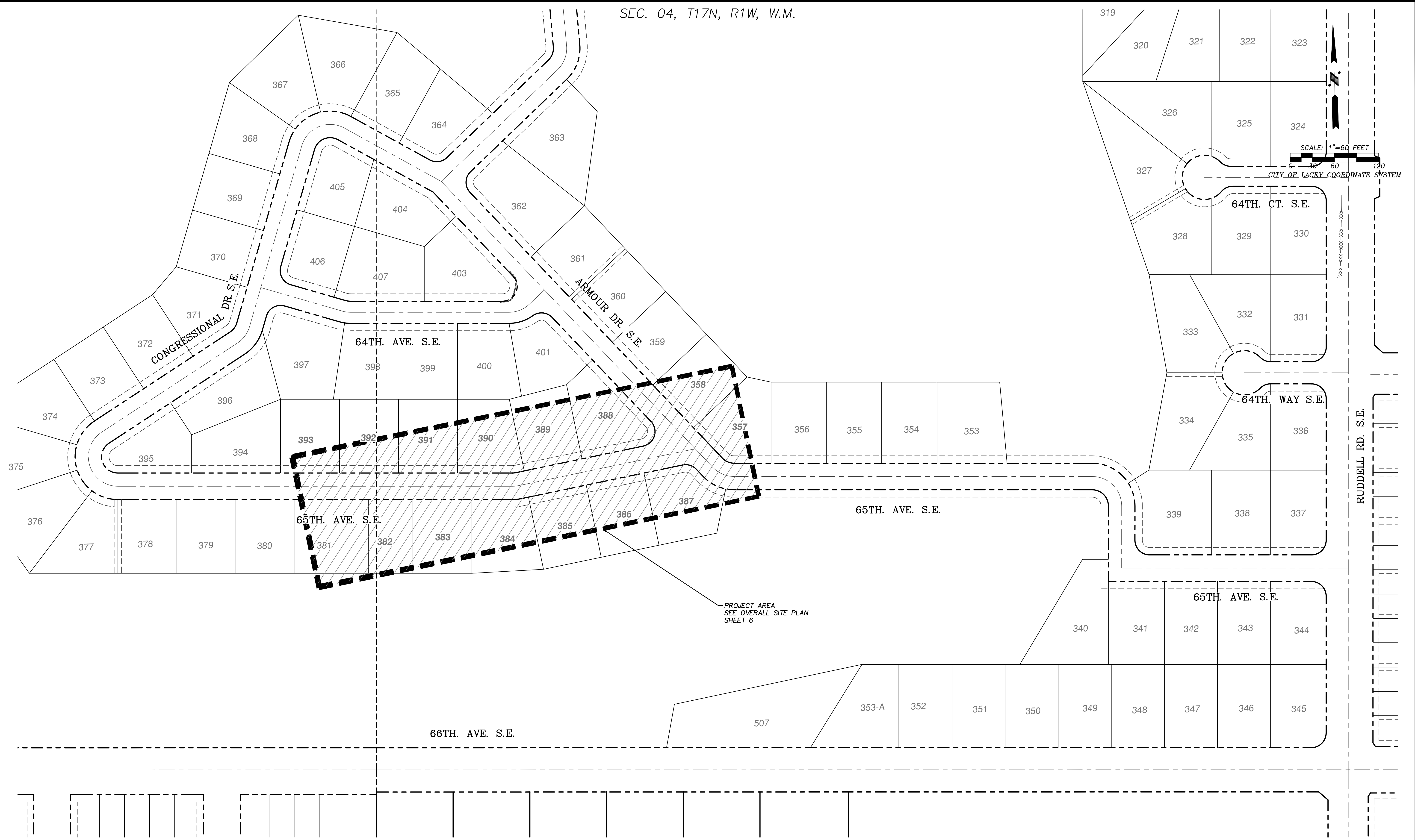


DESIGNED: JSK
DRAFTED: JSK
CHECKED: TEO
HORZ. SCALE: N/A
VERT. SCALE: N/A
FILE: COVER SHEET & NOTES

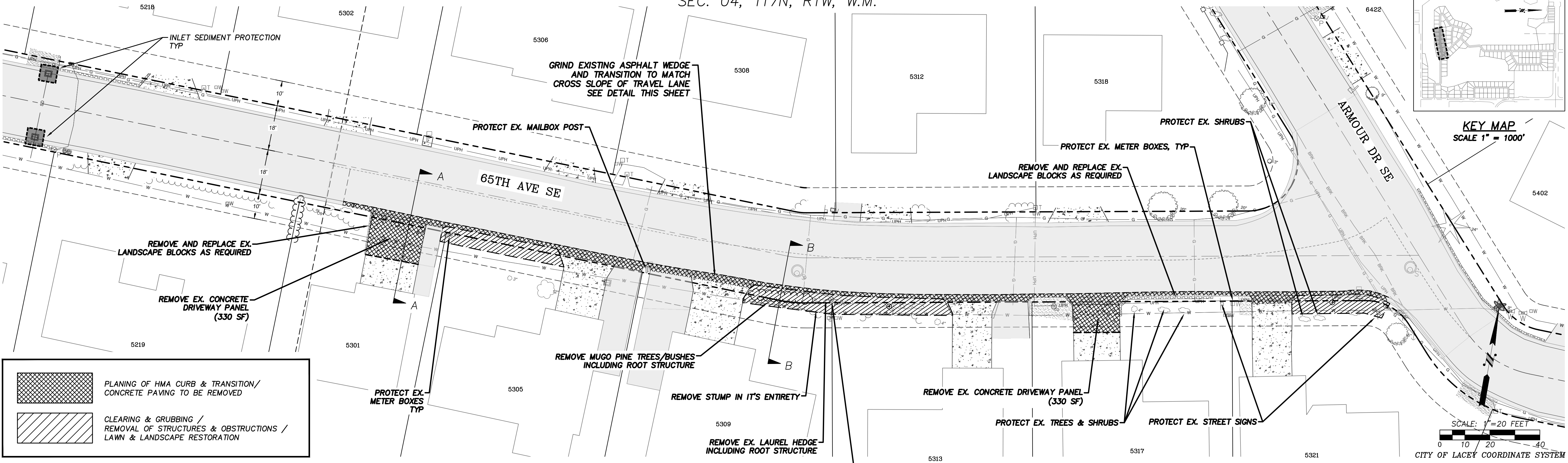
CAPITOL CITY GOLF COURSE
STORMWATER IMPROVEMENTS – WEST
NOTES & LEGEND

REVISION BLOCK		
NO.	DATE	DESCRIPTION

PAGE NO.	SHEET NO.
G2	2
DWG NO.	OF
D-23-14	10

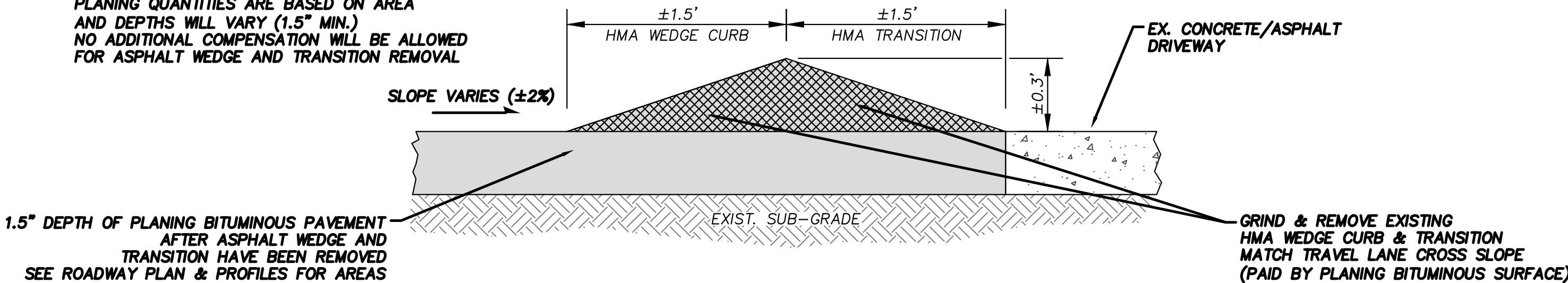


SEC. 04, T17N, R1W, W.M.

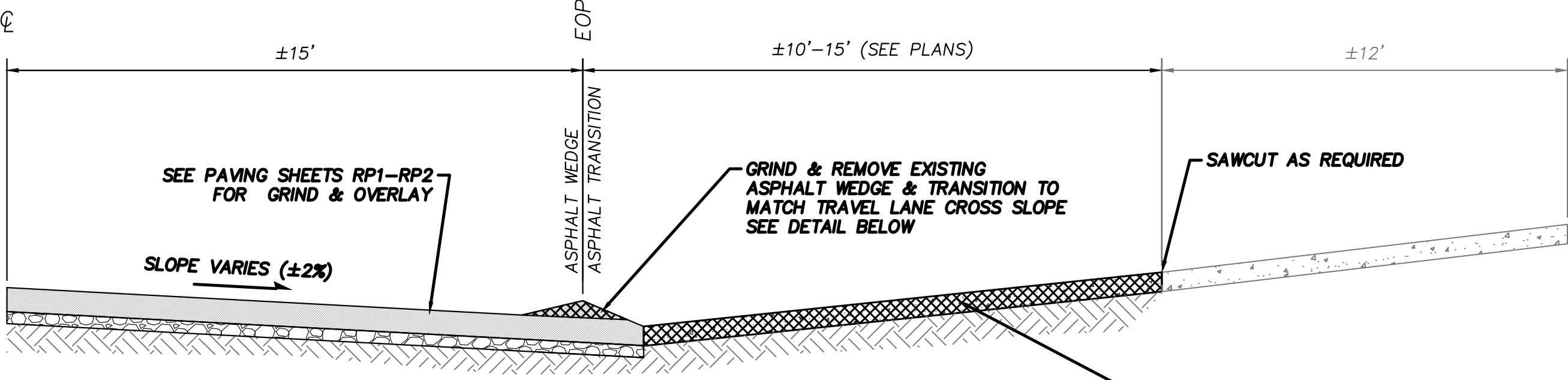


PLANING NOTE

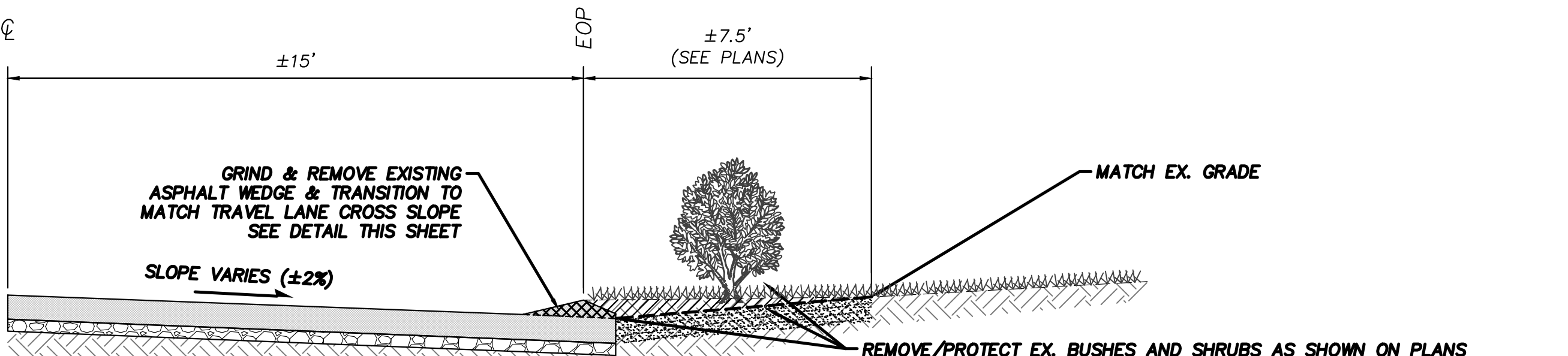
PLANING QUANTITIES ARE BASED ON AREA AND DEPTHS WILL VARY (1.5" MIN.) NO ADDITIONAL COMPENSATION WILL BE ALLOWED FOR ASPHALT WEDGE AND TRANSITION REMOVAL



PLANING OF HMA WEDGE CURB & TRANSITION DETAIL N.T.S.



SECTION A-A (N.T.S.)



SECTION B-B (N.T.S.)

STANDARD CONSTRUCTION SWPPP NOTES

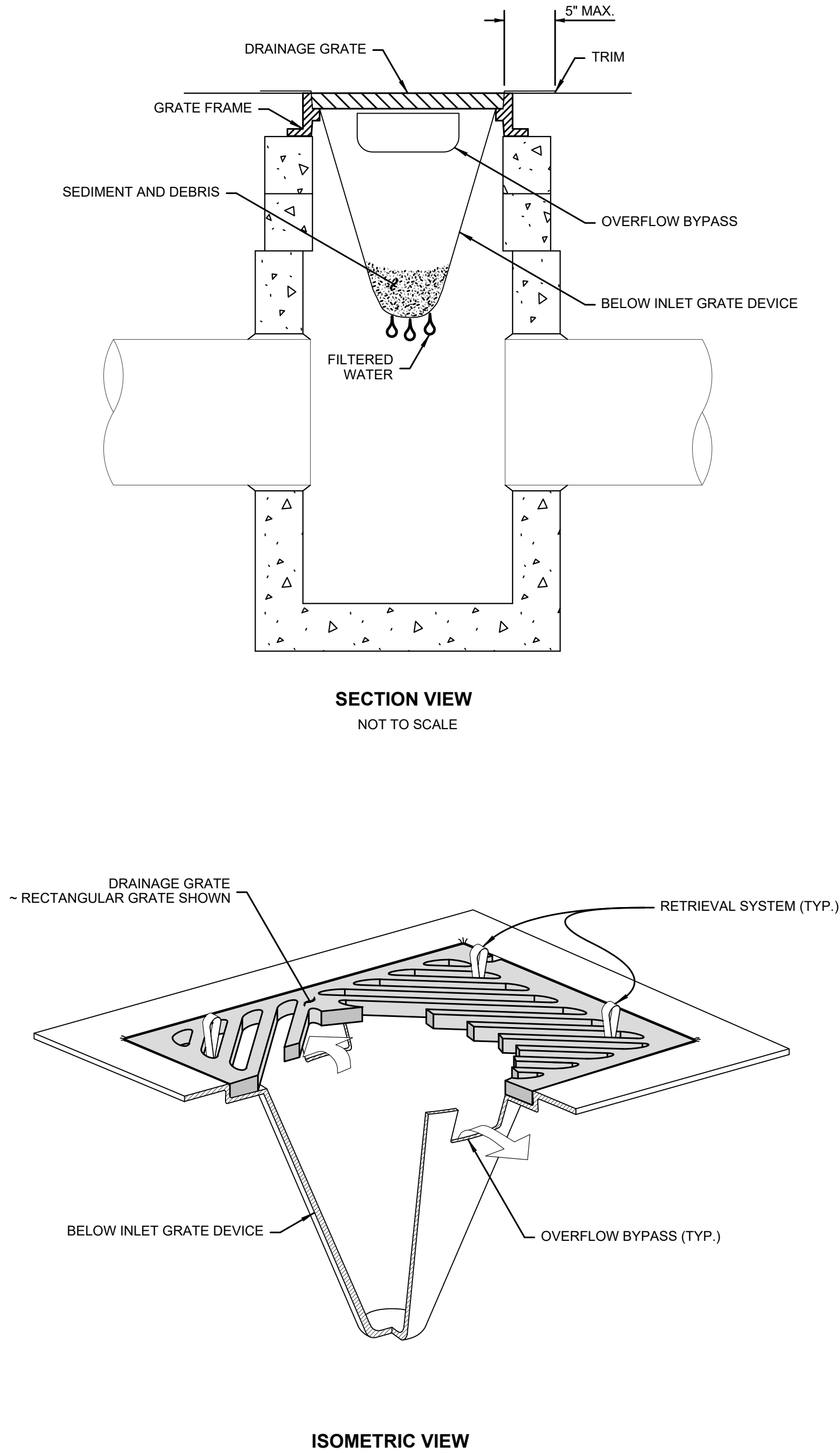
- SITE INSPECTIONS SHALL BE CONDUCTED BY A PERSON WHO IS KNOWLEDGEABLE IN THE PRINCIPLES AND PRACTICES OF EROSION AND SEDIMENT CONTROL. FOR PROJECT SITES THAT THAT REQUIRE A CONSTRUCTION SWPPP, A CERTIFIED EROSION AND SEDIMENT CONTROL LEAD (CESCL) SHALL BE IDENTIFIED IN THE CONSTRUCTION SWPPP AND SHALL BE ON SITE OR ON CALL AT ALL TIMES.
- APPROVAL OF THE CONSTRUCTION SWPPP DOES NOT CONSTITUTE AN APPROVAL OF PERMANENT ROAD OR DRAINAGE DESIGN (E.G. SIZE AND LOCATION OF ROADS, PIPES, RESTRICTORS, CHANNELS, RETENTION/DETENTION/INFILTRATION FACILITIES, UTILITIES, ETC.).
- THE IMPLEMENTATION OF THE CONSTRUCTION SWPPP AND THE CONSTRUCTION, MAINTENANCE, REPLACEMENT, AND UPGRADING OF THESE CONSTRUCTION SWPPP FACILITIES IS THE RESPONSIBILITY OF THE CONTRACTOR UNTIL ALL CONSTRUCTION IS COMPLETED AND APPROVED AND VEGETATION/LANDSCAPING IS ESTABLISHED.
- THE CLEARING LIMIT BOUNDARIES SHOWN ON THIS PLAN SHALL BE CLEARLY FLAGGED IN THE FIELD PRIOR TO CONSTRUCTION. DURING THE CONSTRUCTION PERIOD, NO DISTURBANCE BEYOND THE FLAGGED CLEARING LIMITS SHALL BE PERMITTED. THE FLAGGING SHALL BE MAINTAINED BY THE APPLICANT/CONTRACTOR FOR THE DURATION OF CONSTRUCTION.
- THE CONSTRUCTION SWPPP FACILITIES SHOWN ON THIS PLAN MUST BE CONSTRUCTED IN CONJUNCTION WITH ALL CONSTRUCTION ACTIVITIES, AND IN SUCH A MANNER AS TO ENSURE THAT SEDIMENT AND SEDIMENT-LADEN WATER DO NOT ENTER THE DRAINAGE SYSTEM, ROADWAYS, OR VIOLATE APPLICABLE STANDARDS FOR SURFACE WATER QUALITY, GROUNDWATER QUALITY, OR SEDIMENT QUALITY.
- THE CONSTRUCTION SWPPP FACILITIES SHOWN ON THIS PLAN ARE THE MINIMUM REQUIREMENTS FOR ANTICIPATED SITE CONDITIONS. DURING THE CONSTRUCTION PERIOD, THESE CONSTRUCTION SWPPP FACILITIES SHALL BE UPGRADED AS NEEDED FOR UNEXPECTED STORM EVENTS AND TO ENSURE THAT SEDIMENT AND SEDIMENT-LADEN WATER DO NOT LEAVE THE SITE DURING THE COURSE OF CONSTRUCTION, INCLUDING CONSTRUCTION ON INDIVIDUAL LOTS.
- THE CONSTRUCTION SWPPP FACILITIES ON ACTIVE SITES SHALL BE INSPECTED DAILY BY THE CONTRACTOR. THE FACILITIES SHALL BE MAINTAINED, REPAIRED, OR AUGMENTED AS NECESSARY TO ENSURE THEIR CONTINUED FUNCTION.
- THE CONSTRUCTION SWPPP FACILITIES ON INACTIVE SITES SHALL BE INSPECTED AT LEAST MONTHLY AND WITHIN 48 HOURS FOLLOWING A MAJOR STORM EVENT (1" RAINFALL IN 24 HOURS) BY THE APPLICANT/CONTRACTOR. THE FACILITIES SHALL BE MAINTAINED, REPAIRED, OR AUGMENTED AS NECESSARY TO ENSURE THEIR CONTINUED FUNCTION.
- STORM DRAIN INLETS OPERABLE DURING CONSTRUCTION SHALL BE PROTECTED SO THAT STORMWATER RUNOFF DOES NOT ENTER THE CONVEYANCE SYSTEM WITHOUT FIRST BEING FILTERED OR TREATED TO REMOVE SEDIMENT. AT NO TIME SHALL MORE THAN 1 FOOT OR 1/3 OF THE BMP VOLUME (WHICHEVER IS LESS) OF SEDIMENT BE ALLOWED TO ACCUMULATE WITHIN A STORM DRAIN INLET PROTECTION BMP. ALL CATCH BASINS AND CONVEYANCE LINES SHALL BE CLEANED AS PART OF PROJECT COMPLETION AND ACCEPTANCE. THE CLEANING OPERATION SHALL NOT FLUSH SEDIMENT-LADEN WATER INTO THE DOWNSTREAM SYSTEM.
- STABILIZED CONSTRUCTION ENTRANCES SHALL BE INSTALLED AT THE BEGINNING OF CONSTRUCTION AND MAINTAINED FOR THE DURATION OF THE PROJECT. ADDITIONAL MEASURES MAY BE REQUIRED TO ENSURE THAT ALL PAVED AREAS ARE KEPT CLEAN FOR THE DURATION OF THE PROJECT.
- ROADS SHALL BE INSPECTED DAILY AND CLEANED THOROUGHLY AS NEEDED TO PROTECT DOWNSTREAM WATER RESOURCES OR STORMWATER INFRASTRUCTURE. SEDIMENT SHALL BE REMOVED FROM ROADS BY SHOVELING OR PICKUP SWEEPING AND SHALL BE TRANSPORTED TO A CONTROLLED SEDIMENT DISPOSAL AREA.
- FROM OCTOBER 1 THROUGH APRIL 30, NO SOILS SHALL REMAIN EXPOSED AND UNWORKED FOR MORE THAN 2 DAYS. FROM MAY 1 TO SEPTEMBER 30, NO SOILS SHALL REMAIN EXPOSED AND UNWORKED FOR MORE THAN 7 DAYS. SOILS SHALL BE STABILIZED AT THE END OF THE SHIFT BEFORE A HOLIDAY OR WEEKEND IF NEEDED BASED ON THE WEATHER FORECAST. LINEAR CONSTRUCTION ACTIVITIES, SUCH AS RIGHT-OF-WAY AND EASEMENT CLEARING, ROADWAY DEVELOPMENT, PIPELINES, AND TRENCHING FOR UTILITIES, SHALL COMPLY WITH THESE REQUIREMENTS. THESE STABILIZATION REQUIREMENTS APPLY TO ALL SOILS ON SITE, WHETHER AT FINAL GRADE OR NOT. THE CITY OF LACEY MAY DECREASE THESE TIME LIMITS IF IT CAN BE SHOWN THAT A DEVELOPMENT SITE'S EROSION OR RUNOFF POTENTIAL JUSTIFIES A DIFFERENT STANDARD.
- CONTACT THE CITY FOR APPROVAL PRIOR TO ALL CLEARING, GRADING, AND OTHER SOIL-DISTURBING ACTIVITIES THAT OCCUR BETWEEN OCTOBER 1 AND APRIL 30. SUCH WORK SHALL ONLY BE PERMITTED IF SHOWN TO THE SATISFACTION OF THE CITY THAT THE TRANSPORT OF SEDIMENT FROM THE CONSTRUCTION SITE TO RECEIVING WATERS WILL BE PREVENTED. THE CITY MAY REQUIRE SUPPLEMENTAL SWPPP DOCUMENTATION FOR WET SEASON WORK.
- SOIL STOCKPILES MUST BE STABILIZED AND PROTECTED FROM EROSION.
- HANDLE AND DISPOSE OF ALL POLLUTANTS, INCLUDING WASTE MATERIALS AND DEMOLITION DEBRIS THAT OCCUR ON SITE IN A MANNER THAT DOES NOT CAUSE CONTAMINATION OF STORMWATER. WOODY DEBRIS MAY BE CHOPPED AND SPREAD ON SITE.
- USE SPILL PREVENTION MEASURES, SUCH AS DRIP PANS, WHEN CONDUCTING MAINTENANCE AND REPAIR OF VEHICLES AND EQUIPMENT.

GENERAL EROSION CONTROL NOTES:

- EROSION CONTROL MEASURES SHALL BE IN PLACE PRIOR TO THE BEGINNING OF CONSTRUCTION. THE PROJECT INSPECTOR SHALL INSPECT AND APPROVE THE INSTALLATION OF EROSION CONTROL MEASURES PRIOR TO BEGINNING CONSTRUCTION.
- EROSION CONTROL MEASURES ARE NOT LIMITED TO THE ITEMS SHOWN ON THIS PLAN. THE CONTRACTOR SHALL BE RESPONSIBLE FOR THE INSTALLATION AND MAINTENANCE OF ALL EROSION CONTROL MEASURES. SILTATION OF EXISTING OR PROPOSED DRAINAGE FACILITIES SHALL NOT BE ALLOWED. CARE SHALL BE TAKEN TO PREVENT MIGRATION OF SILTS TO OFF SITE PROPERTIES.
- THE CONTRACTOR SHALL MAKE DAILY SURVEILLANCE OF ALL EROSION CONTROL MEASURES AND MAKE ANY NECESSARY REPAIRS OR ADDITIONS TO THE EROSION CONTROL MEASURES AS REQUIRED. THE CONTRACTOR SHALL PROVIDE ADDITIONAL EROSION CONTROL MEASURES AS DETERMINED NECESSARY BY THE INSPECTOR OR PROJECT ENGINEER. FAILURE TO COMPLY WITH ALL LOCAL AND STATE EROSION CONTROL REQUIREMENTS MAY RESULT IN CIVIL PENALTIES BEING LEVIED AGAINST THE CONTRACTOR.
- DURING THE WET SEASON, NOVEMBER TO MARCH INCLUSIVE, ALL DISTURBED SOILS SHALL BE STABILIZED WITHIN 48 HOURS AFTER STOP OF WORK. EROSION CONTROL MEASURES SHALL INCLUDE, BUT ARE NOT LIMITED TO, COVERING THE AFFECTED AREA INCLUDING SPOIL PILES WITH PLASTIC SHEETING, STRAW MATTING, JUTE MATTING, STRAW MULCH, OR WOOD CHIPS. SEEDING OF THE DISTURBED AREAS SHALL TAKE PLACE AS WEATHER PERMITS.
- ALL SEEDED OR SODDED AREAS SHALL BE CHECKED REGULARLY TO ENSURE VEGETATIVE COVERAGE IS COMPLETE. AREAS SHALL BE REPAIRED, RESEDED, AND FERTILIZED AS REQUIRED.
- TRACKING OF SOIL OFF SITE WILL NOT BE ALLOWED. IF SOIL IS TRACKED ON TO A PUBLIC OR PRIVATE STREET, IT SHALL BE REMOVED BY THE END OF THAT WORKING DAY. ANY FURTHER TRACKING OF MUD SHALL THEN BE PREVENTED BY SWEEPING OR WASHING OF THE VEHICLE'S TIRES BEFORE DRIVING ON ANY PAVED STREET.
- EXCAVATED MATERIAL SHALL BE PLACED ON THE UPHILL SIDE OF TRENCHES.
- TRENCH DEWATERING DEVICES SHALL BE DISCHARGED IN A MANNER THAT WILL NOT ADVERSELY AFFECT FLOWING STREAMS, DRAINAGE SYSTEMS, OR OFF SITE PROPERTIES.
- ALL STORM SEWER INLETS RECEIVING RUNOFF FROM THE PROJECT DURING CONSTRUCTION SHALL BE PROTECTED SO THAT SEDIMENT-LADEN WATER WILL BE FILTERED BEFORE ENTERING THE SYSTEM.
- ALL OFF SITE CATCH BASINS AND CONCRETE SCUPPERS IMMEDIATELY ADJACENT TO THE WORK AREA SHALL BE PROTECTED FROM SILTATION.
- ALL DISTURBED AREAS SHALL BE SEEDED OR SODDED UPON COMPLETION OF WORK. THE CONTRACTOR SHALL BE RESPONSIBLE TO ENSURE THAT COMPLETE COVERAGE OF THE DISTURBED AREAS IS PROVIDED AND THAT GROWTH OF VEGETATION IS ESTABLISHED.

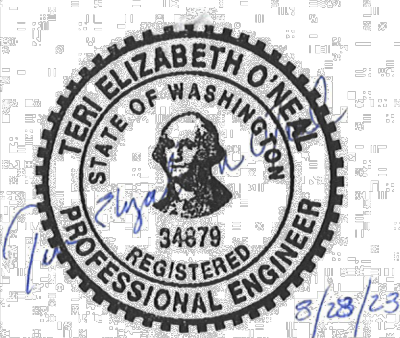
CONSTRUCTION SEQUENCE:

- CONSTRUCTION SHALL BE CONDUCTED IN ACCORDANCE WITH THE APPROVED PLANS & SPECIFICATIONS. ANY DEVIATIONS MUST BE APPROVED BY THE ENGINEER PRIOR TO ANY SITE DISTURBING ACTIVITY.
- FOR CONSTRUCTION OF THIS PROJECT, THE FOLLOWING GENERAL SEQUENCE SHALL BE OBSERVED:
 - CONTRACTOR SHALL COORDINATE PROJECT SCHEDULE AND PROPOSED STAGING/STOCKPILE AREA(S) WITH ENGINEER PRIOR TO START OF ANY CONSTRUCTION ACTIVITIES. ONCE STAGING AREA(S) HAVE BEEN AGREED UPON, CONTRACTOR SHALL UPDATE AND MODIFY CSWPPP AND OBTAIN ANY REQUIRED PERMITS TO COMPLY WITH ALL REQUIREMENTS FOR CONSTRUCTION STORMWATER POLLUTION PREVENTION.
 - INSTALL EROSION CONTROL MEASURES INCLUDING, BUT NOT LIMITED TO INLET PROTECTION, FILTER FABRIC FENCING AND STABILIZED CONSTRUCTION ENTRANCE PER THE APPROVED CSWPPP.
 - CALL FOR INSPECTION BY THE ENGINEER.
 - BEGIN CONSTRUCTION ACTIVITIES AS SPECIFIED IN THE CONTRACT DOCUMENTS.
- MONITOR ALL EROSION CONTROL FACILITIES, REPAIR, MODIFY, AND ENHANCE AS REQUIRED OR AS DIRECTED.



INLET SEDIMENT PROTECTION

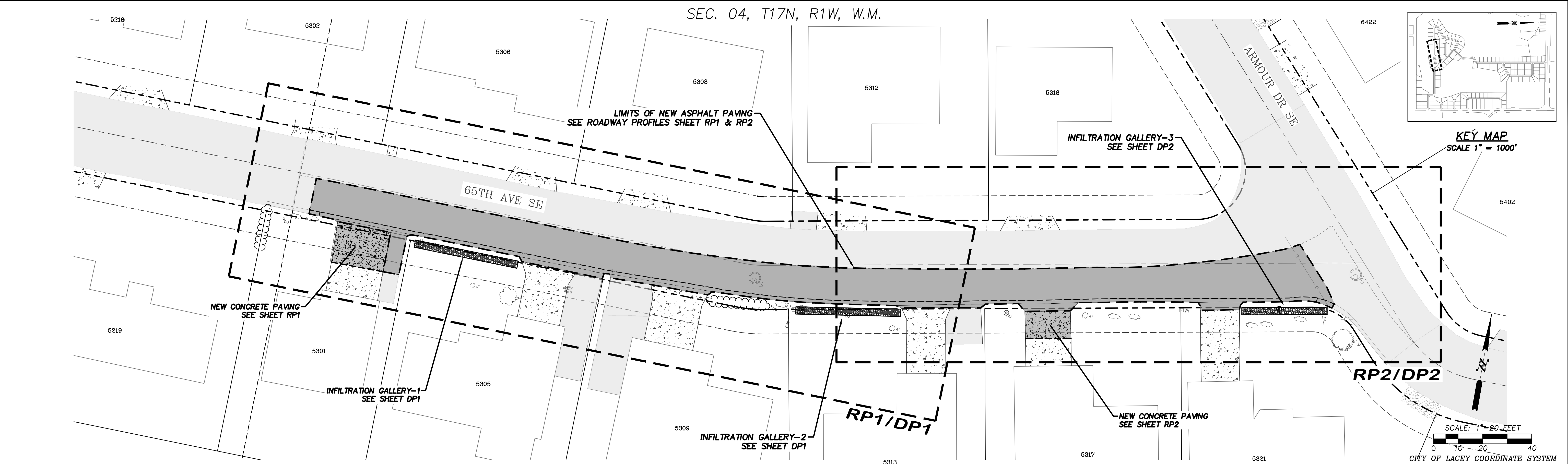
CITY OF LACEY, WASHINGTON
DEPARTMENT OF PUBLIC WORKS
420 COLLEGE STREET SE
LACEY, WA 98503-1238 (360) 491-5600



DESIGNED: JSK
DRAFTED: JSK
CHECKED: TEO
HORZ. SCALE: 1"=20'
VERT. SCALE: N/A
FILE: DEMO

CAPITOL CITY GOLF COURSE
STORMWATER IMPROVEMENTS
EROSION CONTROL NOTES & DETAILS

REVISION BLOCK			PAGE NO.	SHEET NO.
NO.	DATE	DESCRIPTION	EC2	5
			DWG NO.	OF
			D-23-14	10



Reinforcing

- ASTM A-615 Specifications
- All components
- #3 grade 60 reinforcing bar

Cast Iron Grate

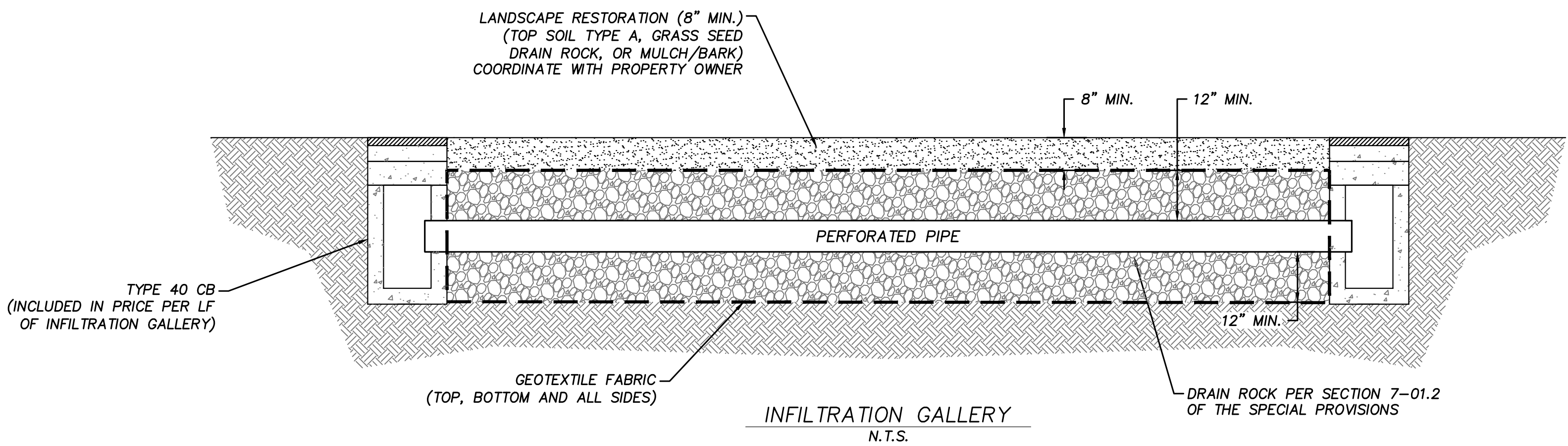
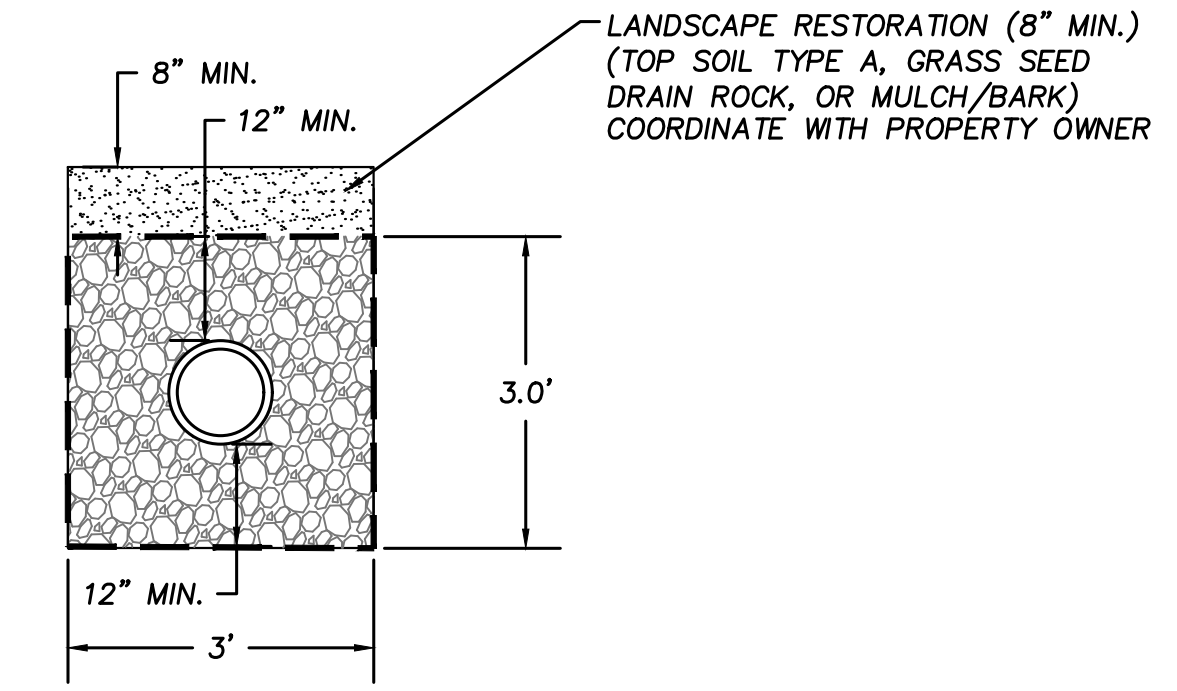
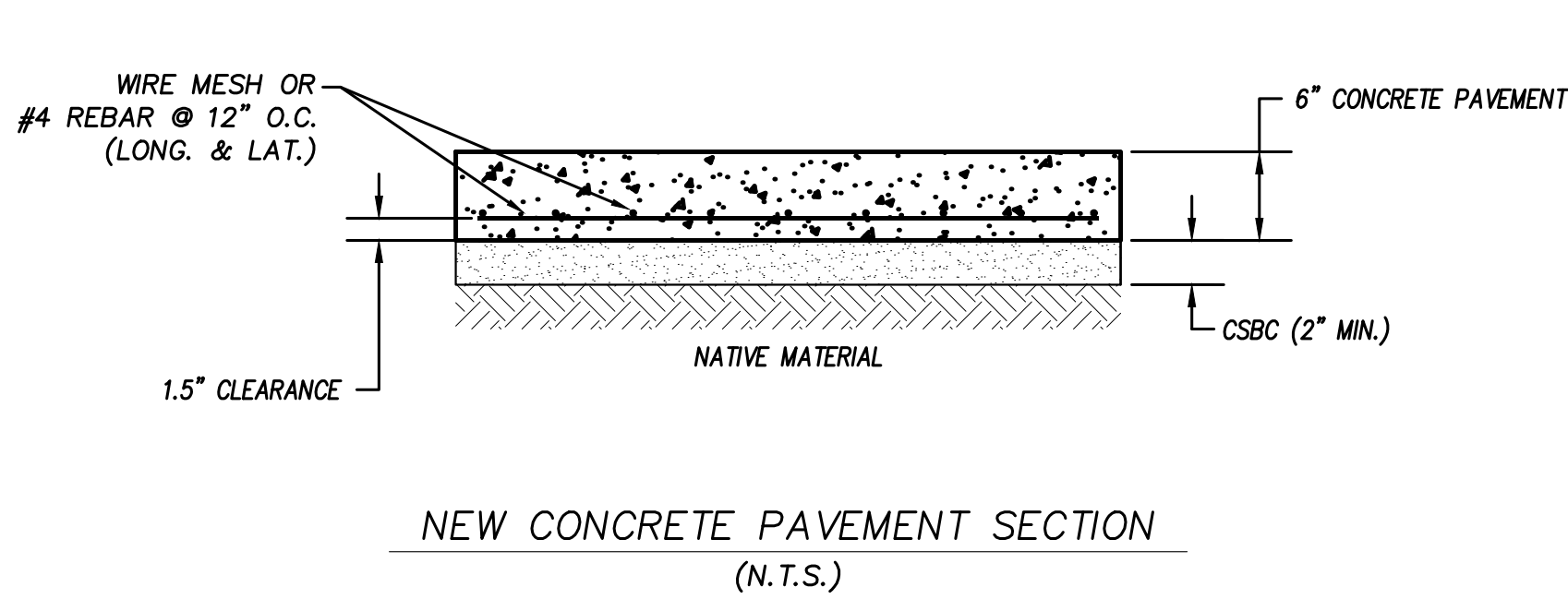
- The 14" x 20" cast iron grate drops in the recessed area at the top of the basin or riser
- An 14" x 20" frame & grate is available


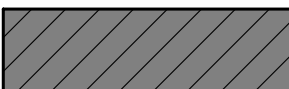
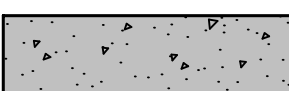
Additional Information

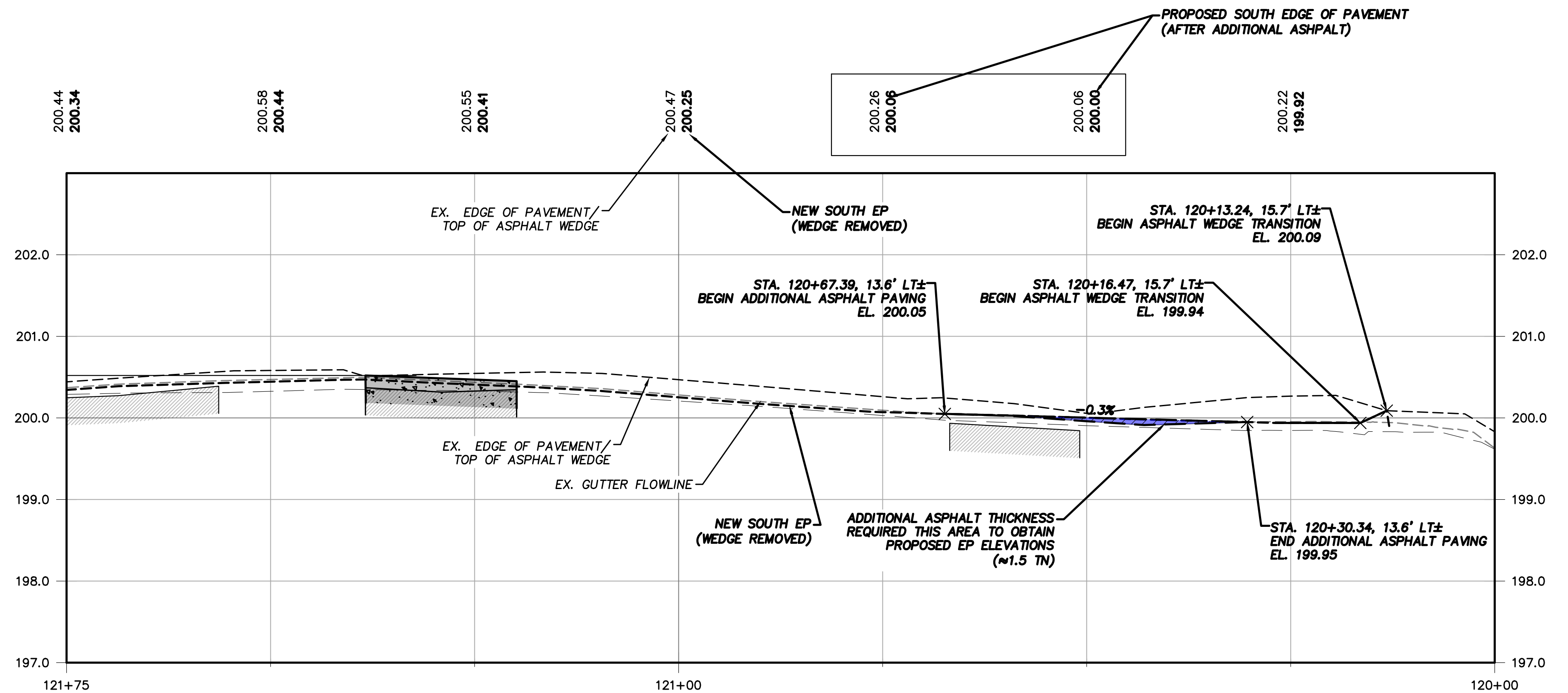
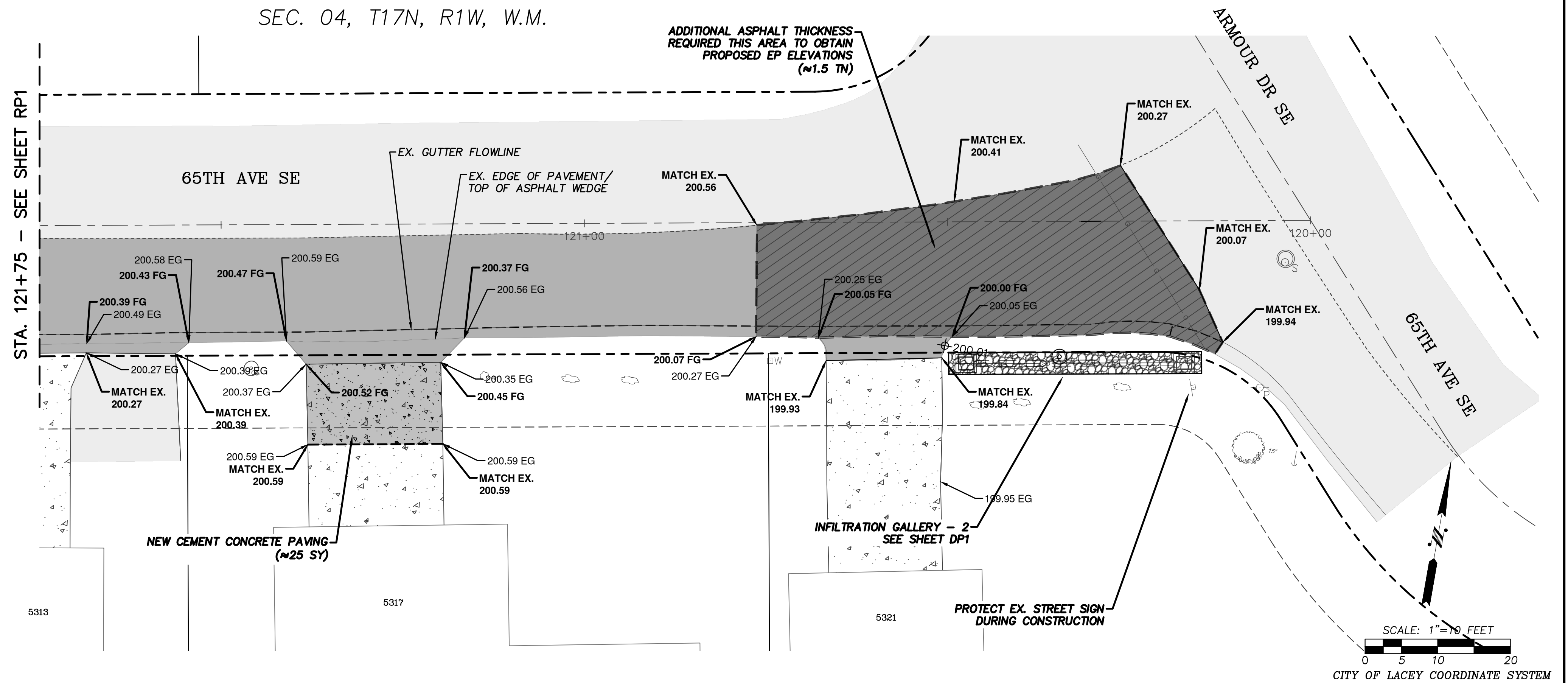
- The base unit has a 12" diameter knock-out on each of the four sides
- Base unit - 1000 lbs
- 6 inch Riser - 150 lbs
- 12 inch Riser - 300 lbs
- 1½ inch hole on each side for handling

Catch Basin Type 40

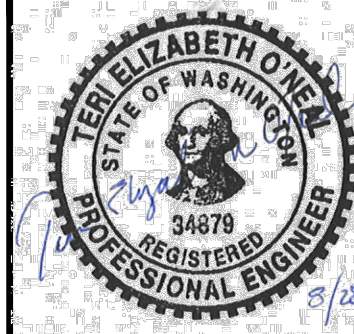
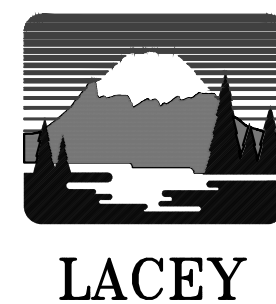
26" 18" 12" 20" 6" 12" 30" 16" 12"



	1.5" PLANING BITUMINOUS SURFACE 1.5" HMA CL. 1/2" PG 58V-22 (SEE 65th AVE CROSS SECTION SHEET SP1)
	ADDITIONAL HMA CL. 1/2" PG 58V-22 TO MATCH GRADES AS SHOWN ON PLAN & PROFILE
	CEMENT CONC. PAVEMENT FOR DRIVEWAYS (BID AS CEMENT CONC. SIDEWALK)



CITY OF LACEY, WASHINGTON
DEPARTMENT OF PUBLIC WORKS
420 COLLEGE STREET SE
LACEY, WA 98503-1238 (360) 491-5600

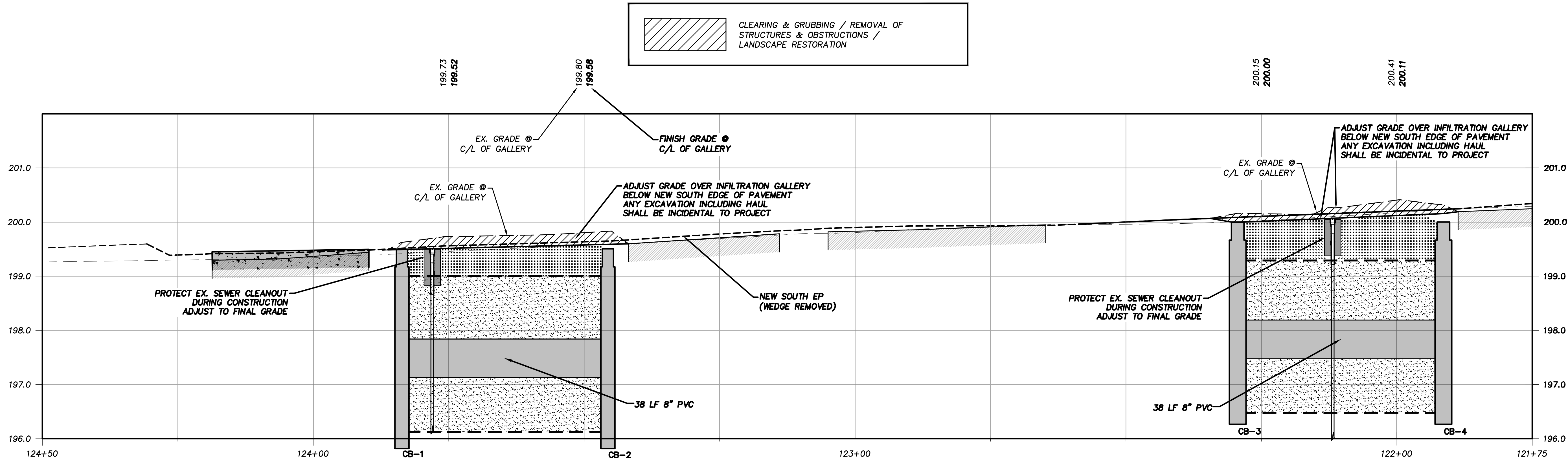
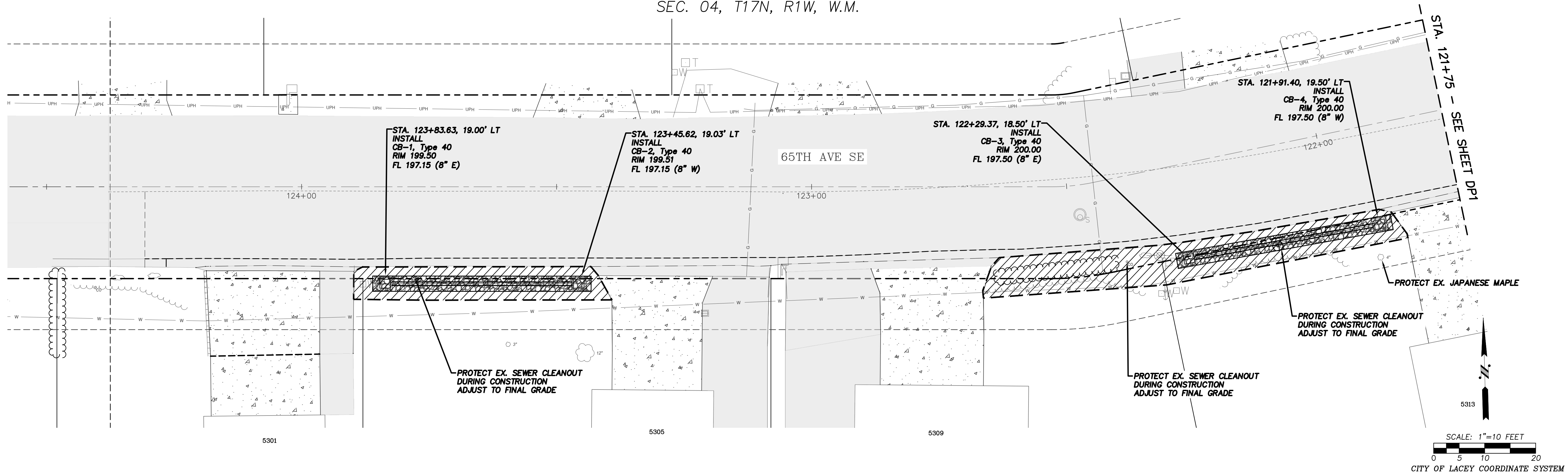


DESIGNED:	JSK
DRAFTED:	JSK
CHECKED:	TEO
HORZ. SCALE:	1"=10'
VERT. SCALE:	1"=1'
FILE:	PAVING

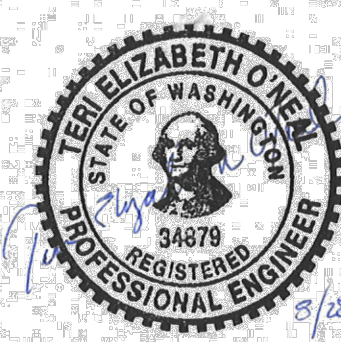
CAPITOL CITY GOLF COURSE
STORMWATER IMPROVEMENTS
ROADWAY PLAN & PROFILE – 2

REVISION BLOCK			PAGE NO.	SHEET NO.
NO.	DATE	DESCRIPTION	RP2	8
			DWG NO.	OF
			D-23-14	10

SEC. 04, T17N, R1W, W.M.



CITY OF LACEY, WASHINGTON
DEPARTMENT OF PUBLIC WORKS
420 COLLEGE STREET SE
LACEY, WA 98503-1238 (360) 491-5600

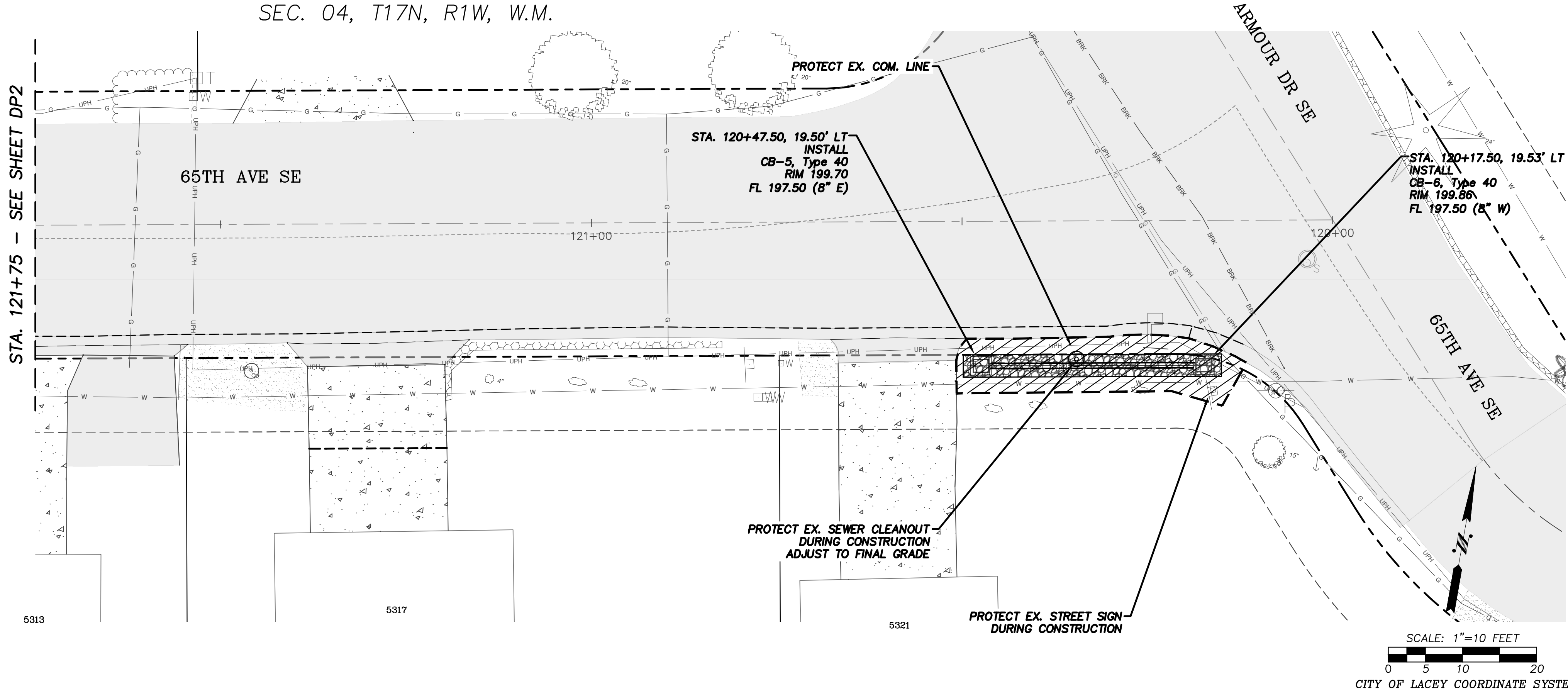


DESIGNED: JSK
DRAFTED: JSK
CHECKED: TEO
HORIZ. SCALE: 1"=10'
VERT. SCALE: 1"=1'
FILE: DRAINAGE PROFILES

CAPITOL CITY GOLF COURSE STORMWATER IMPROVEMENTS DRAINAGE PROFILE - 1

REVISION BLOCK			PAGE NO.	SHEET NO.
NO.	DATE	DESCRIPTION	DP1	9
			DWG NO.	OF
			D-23-14	10

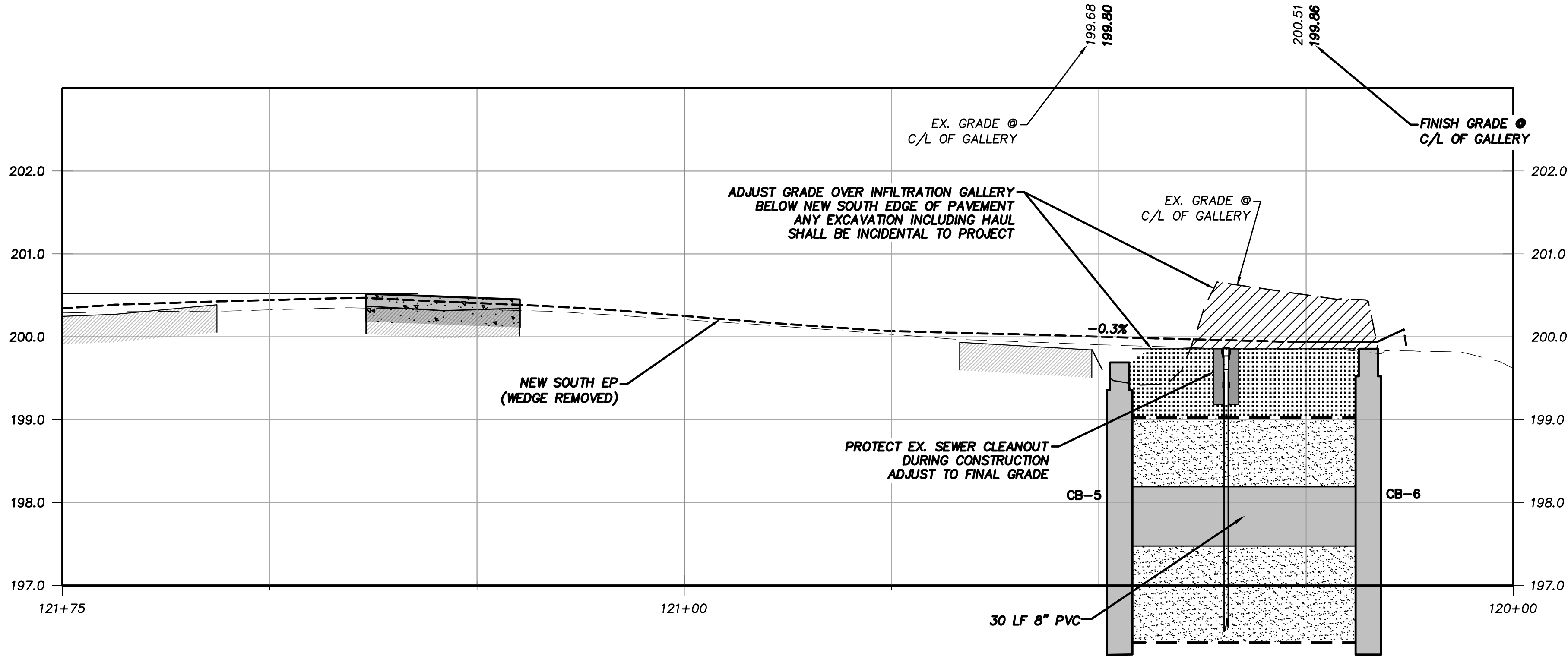
SEC. 04, T17N, R1W, W.M.



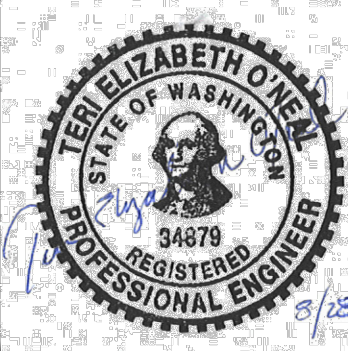
CLEARING & GRUBBING / REMOVAL OF
STRUCTURES & OBSTRUCTIONS /
LANDSCAPE RESTORATION

SCALE: 1"=10 FEET
0 5 10 20

CITY OF LACEY COORDINATE SYSTEM



CITY OF LACEY, WASHINGTON
DEPARTMENT OF PUBLIC WORKS
420 COLLEGE STREET SE
LACEY, WA 98503-1238 (360) 491-5600



DESIGNED: JSK
DRAFTED: JSK
CHECKED: TEO
HORZ. SCALE: 1"=10'
VERT. SCALE: 1"=1'
FILE: DRAINAGE PROFILES

CAPITOL CITY GOLF COURSE
STORMWATER IMPROVEMENTS
DRAINAGE PROFILE - 2

REVISION BLOCK		
NO.	DATE	DESCRIPTION

PAGE NO.	SHEET NO.
DP2	10
DWG NO.	OF
D-23-14	10