

ADDENDUM NO. 1

TO THE PLANS, SPECIFICATIONS, PROPOSAL AND CONTRACT FOR THE CITY OF LACEY

RAC PARKING LOT EXPANSION

LACEY CONTRACT NO. PW 2022-19

TO ALL PLAN HOLDERS:

You are hereby notified of the following changes, revisions, deletions, additions, corrections and/or clarifications to the plans, specifications, and contract documents for the *RAC PARKING LOT EXPANSION* project. This addendum is made part of these contract documents as though it was originally included in the Contract. The Contractor shall note the location of the Addenda Receipt Acknowledgement on Page B-4 of the Contract Proposal.

Issued this 25th day of September, 2023.

I. ADDITIONS, MODIFICATIONS, AND/OR DELETIONS TO THE PLANS

ITEM NO. 1: **Sheet SP-01**

- 1) *The revisions include modifications to the driveways shown on Sheet SP-01.*

Delete Sheet SP-01 and replace it with the new page as attached.

ITEM NO. 2: **Sheet SP-02**

- 2) *The revisions include modifications to the paving sections on Sheet SP-02.*

Delete Sheet SP-02 and replace it with the new page as attached.

ITEM NO. 3: **Sheet SP-03**

- 3) *The revisions include the addition of DWG. No. 4-7, Cement Concrete Driveway, on Sheet SP-03.*

Delete Sheet SP-03 and replace it with the new page as attached.

ITEM NO. 4:
Sheet SD-01

- 4) *The revisions include modifications to the notes and callouts for Catch Basins on Sheet SD-01.*

Delete Sheet SD-01 and replace it with the new page as attached.

ITEM NO. 5:
Sheet E-101

- 5) *The revisions include modifications to the schematics and callouts on Sheet E-101.*

Delete Sheet E-101 and replace it with the new page as attached.

II. ADDITIONS, MODIFICATIONS, AND/OR DELETIONS TO THE SPECIFICATIONS

ITEM NO. 1:
Section B

- 1) *The revisions include changes to bid item A1, A12, A13, B1, B8, B12, B12, B15, C1, addition of bid items A12, B7, B16, and subsequent changes in numbering of bid items A12-A24 and B7-B26.*

DELETE Bid Proposal Pages B-1 to B-4 and **REPLACE** with new Bid Proposal as attached.

ITEM NO. 2:
Section D, Section 1-02.6.1 Recycled Materials

- 2) *The revisions include modifications to Section D, Section 1-02.6.1 APWA GSP*

DELETE this section in its entirety

ITEM NO. 3:
Section D, Section 2-13.3(5) Electrical Service Conversion

- 3) *The revisions include modifications to Section D, Section 2-13.3(5) Lacey GSP*

DELETE this section in its entirety

ITEM NO. 4 & 5:

Section D, Section 7-04 Storm Sewers

- 4) *The revisions include modifications to 7.04-2 Materials Lacey GSP*

DELETE this section in its entirety

- 5) *The revisions include modifications to Section D, Section 7-04.5*

DELETE this section and replace as shown below:

7-04.5 Payment

(October 30, 2018 Lacey GSP)

Delete this section and replace with the following:

“Connect to Existing Storm Main”, per each.

The unit contract price for "Connect to Existing Storm Main" shall be full pay for providing all labor, tools, equipment, and materials necessary to connect to the existing main. For purposes of payment, there will be no distinction made for the difficulty of connecting to the existing main or the quantity of connecting pipes or other materials needed. If no such item exists all costs shall be incidental to the project and no additional compensation shall be allowed.

“___ Inch Diameter Storm Sewer Pipe”, per linear foot.

The unit contract price per linear foot for “___ Inch Diameter Storm Sewer Pipe”, shall be full compensation for all labor, material, and equipment to furnish, place, assemble, and install storm sewer line, complete in place, including all wyes, tees, caps, plugs, trash racks, debris barriers, special fittings, joint materials, commercial concrete, adjustment of inverts to manholes, dewatering, bypass pumping, and testing. Further, all excavation, hauling, disposal, compaction, temporary patching and other required earthwork shall be included.

Trash racks required on the end of existing pipes shall be incidental to the overall storm system and new storm sewer pipe identified herein.

ITEM NO. 6:

Section D, Section 7-05 Manholes, Inlets, Catch Basins, and Drywells

- 6) *The revisions include modifications to Section D, Section 7-05.5*

SUPPLEMENT this section as shown below:

7-05.5 Payment

(October 30, 2018 Lacey GSP)

Supplement this section with the following:

The unit contract price per each for manholes and catch basins shall be full pay for furnishing all labor, tools, equipment, and materials required to place the structure including excavation, haul, backfill, testing, and all accessories, such as rings, covers, grates, steps, grate inlets, trash racks, beehive grates and debris cages, removable silt trap tees, GU liners, inside drops, outside drops and all other items needed to install the manhole complete in place in accordance with the plans and these specifications in conformity with the lines and grades staked.

ITEM NO. 7 & 8:

Section D, Section 8-03 Irrigation Systems

- 7) *The revisions include modifications to Section D, Section 8-03.4 Measurement Lacey GSP*

DELETE this section and replace with the following as shown below:

8-03.4 Measurement

(***)**

Delete this section and replace with the following:

All costs in constructing the irrigation system shall be incidental to “Landscaping”.

- 8) *The revisions include modifications to Section D, Section 8-03.4 Measurement Lacey GSP*

8-03.5 Payment

(***)**

Delete this section and replace with the following:

All costs in constructing the irrigation system shall be incidental to “Landscaping”.

ITEM NO. 9:

Section D, Section 8-06 Cement Concrete Driveway Entrances

9) *The revisions include modifications to Section D, Section 8-06.5*

ADD this section as shown below:

8-06.5 Payment

(October 29, 2010 Lacey GSP)

Supplement this section with the following:

“6 Inch Cement Conc. Driveway Entrance”, per square yard.

All costs in constructing the driveway entrance in segments and installing and removing the temporary approach shall be incidental to this bid item.

ITEM NO. 10:

Section E, Section 26 5000 Lighting

10) *The revisions include modifications to Part 3, Execution 3.04 A*

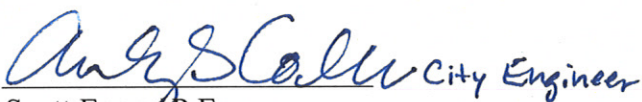
DELETE this section in its entirety.

ITEM NO. 11:

Section E, Section 33 4211 Stormwater Gravity Piping

11) *The revisions include modifications to Part 2, Products 2.01B*

DELETE this section in its entirety and **REPLACE** with new section as attached.

for  City Engineer
Scott Egger, P.E.
Director of Public Works

CITY OF LACEY

RAC Parking Lot Expansion

EV Chargers

Addendum 1

Lacey Contract Number: PW 2022-19

Federal Aid Project Number:

WSDOT Contract Number:

TIB Contract Number:

Contract Proposal

DATE: _____

The undersigned, as bidder, has examined the bid documents as prepared by the Public Works Department, City of Lacey.

The undersigned, as bidder, proposes to furnish all material and perform all labor in accordance with the bid documents at the following prices.

Bidder must fill in unit prices in figures for each item and total.

Bidder shall sign this proposal form and submit all required paperwork with the bid.

A Roadway - Frontage Improvements

No.	Quantity	Unit	Item ID	Item Description	Unit Price	Extended Price
A1	31000	MC	104-010	Minor Change	\$1.00	\$31,000.00
A2	1	LS	109-010	Mobilization	LUMP SUM	
A3	1	LS	110-010	Project Temporary Traffic Control	LUMP SUM	
A4	55	HR	110-040	Flaggers		
A5	40	HR	110-070	Portable Changeable Message Sign		
A6	1	LS	201-010	Clearing and Grubbing	LUMP SUM	
A7	430	CY	203-010	Roadway Excavation Incl. Haul		
A8	55	TN	404-010	Crushed Surfacing Base Course		
A9	55	TN	404-020	Crushed Surfacing Top Course		
A10	225	TN	504-011	HMA Cl. 1/2" PG 58H-22		
A11	1	LS	504-610	Preparation of Existing Surfaces	LUMP SUM	
A12	39	LF	704-508	8 Inch Diameter Storm Sewer Pipe		
A13	160	LF	704-512	12 Inch Diameter Storm Sewer Pipe		
A14	2	EA	705-210	Catch Basin Type 1		
A15	1	LS	801-680	Erosion/Water Pollution Control	LUMP SUM	
A16	1	LS	802-980	Landscaping	LUMP SUM	
A17	660	LF	804-010	Cement Conc. Traffic Curb and Gutter		
A18	475	SY	814-510	Cement Conc. Sidewalk		
A19	3	EA	814-540	Cement Conc. Sidewalk Ramp		
A20	1	LS	820-505	Illumination System	LUMP SUM	
A21	1200	LF	822-020	Plastic Line		

C General - EV chargers

No.	Quantity	Unit	Item ID	Item Description	Unit Price	Extended Price
C1	28000	MC	104-010	Minor Change	\$1.00	\$28,000.00
C2	1	LS	104-020	Additive #1	LUMP SUM	
C3	1	LS	104-025	Additive #2	LUMP SUM	
C4	1	LS	109-010	Mobilization	LUMP SUM	
C5	1	LS	899-916	Type 3 Electric Vehicle Charger	LUMP SUM	

Schedule C Subtotal:

Tax Rate (%) : 9.50 Tax:

Schedule C Total:

Contract Total:
(All Schedules)

The undersigned also agrees as follows:

- Within 10 calendar days after the contract is awarded to sign and return the contract and provide insurance documents.
- That this proposal cannot be withdrawn within 45 days after receipt of bids.
- That it is the understanding that the City of Lacey may accept or reject any or all bids.
- The undersigned hereby agrees to pay for labor not less than the prevailing rates of wages per the bid documents.
- Enclosed with this proposal is a bid deposit in the sum of 5% of the bid total amount which it is agreed shall be collected and retained by the City of Lacey as liquidated damages in the event this proposal is accepted by the City of Lacey with 45 calendar days after the receipt of bids and the undersigned fails to execute the contract and the required bond with the City of Lacey, under the conditions thereof, within 10 calendar days after the undersigned is notified that said proposal has been accepted, otherwise said bid deposit shall be returned to the undersigned upon demand.
- A Performance/Payment Bond will be furnished to the City with the contract.
- Retention will be held on this contract per RCW 60.28.011.

Addenda Receipt Acknowledged

_____, _____, _____

Signature of Bidder

Date

(If an Individual, Partnership, or Non-Incorporated organization)

Firm Name

Please Print

Phone

Address of Bidder: _____

Name and Address of Firm Members:

Signature of Bidder (if a Corporation)

Title: _____

Firm Name: _____ Phone: _____

Business Address: _____

Incorporated under the Laws of the State of _____

Officers

Address

President: _____

Secretary: _____

Treasurer: _____

SEC. 14, T 18N., R 1W., W.M.



LEGEND	
	STALL COUNT
	CEMENT CONCRETE TRAFFIC CURB PER WSDOT STD. PLAN F.10.12.04 SEE SP-03
	CEMENT CONCRETE CURB AND GUTTER PER CITY OF LACEY STD. DWG. 4-14 SEE SP-03
	CONCRETE SIDEWALK PER CITY OF LACEY STD. DWG. 4-9: SEE SP-03
	LIGHT DUTY ASPHALT PAVING: SEE SP-02
	PRECAST CONCRETE WHEELSTOP: SEE SP-02
	PARKING LOT LIGHT POLE FIXTURE(ARROW INDICATES DIRECTION OF AIMING FOR OPTICS) SEE ELECTRICAL PLANS
	STREET LIGHT FIXTURE: SEE ELECTRICAL PLANS
	FIXED POLE MOUNTED CAMERA - MOUNT AT +30' AFG. SEE ELECTRICAL PLANS
	SITE HANDHOLE: SEE ELECTRICAL PLANS
	FLOOD LIGHT - SEE ELECTRICAL PLANS

- CONSTRUCTION NOTES:**
- AUTO PARKING STALL: 9'x20' (TYP): SEE SP-02
 - ADA ACCESSIBLE PARKING STALLS: SEE SP-02
 - ONE WAY BUS ONLY DRIVE AISLE
 - BUS PARKING STALL: 12'x40' (TYP): SEE SP-02
 - 4" WIDE WHITE PAINT LINES
APPLY TWO (2) COATS OF TRAFFIC WHITE PAINT
WITH 7 MIL DFT PER COAT (TYP)
 - 4" WIDE DIAGONAL STRIPING @ 18" O.C. (TYP)
TWO (2) COATS OF TRAFFIC WHITE PAINT
WITH 7 MIL DFT PER COAT
 - INSTALL BOLLARD PER WSDOT STANDARD DETAIL
H-60.20-01. COORDINATE WITH ELECTRICAL CONTRACTOR
FOR LOCATION PER THE EV CHARGER MANUFACTURER.
 - CEMENT CONCRETE DRIVEWAY: SEE SP-03

CALL BEFORE YOU DIG
THE CONTRACTOR SHALL BE FULLY RESPONSIBLE FOR THE LOCATION
AND PROTECTION OF ALL EXISTING UTILITIES. THE CONTRACTOR SHALL
VERIFY ALL UTILITY LOCATIONS PRIOR TO CONSTRUCTION BY CALLING
THE UNDERGROUND LOCATE LINE AT 811 OR 1.800.424.5555 A
MINIMUM OF 48 HOURS PRIOR TO ANY EXCAVATION.

REVISIONS	BY	DATE
1	ADDENDUM 1	

SCJ ALLIANCE
CONSULTING SERVICES
8739 TALON LANE NE SUITE 200, LACEY, WA 98516
P: 360.352.2400 F: 360.352.1509
WWW.SCJALLIANCE.COM

CITY OF LACEY WASHINGTON
DEPARTMENT OF PUBLIC WORKS
420 COLLEGE STREET S.E.
LACEY, WA 98503-1238 (360) 491-5800

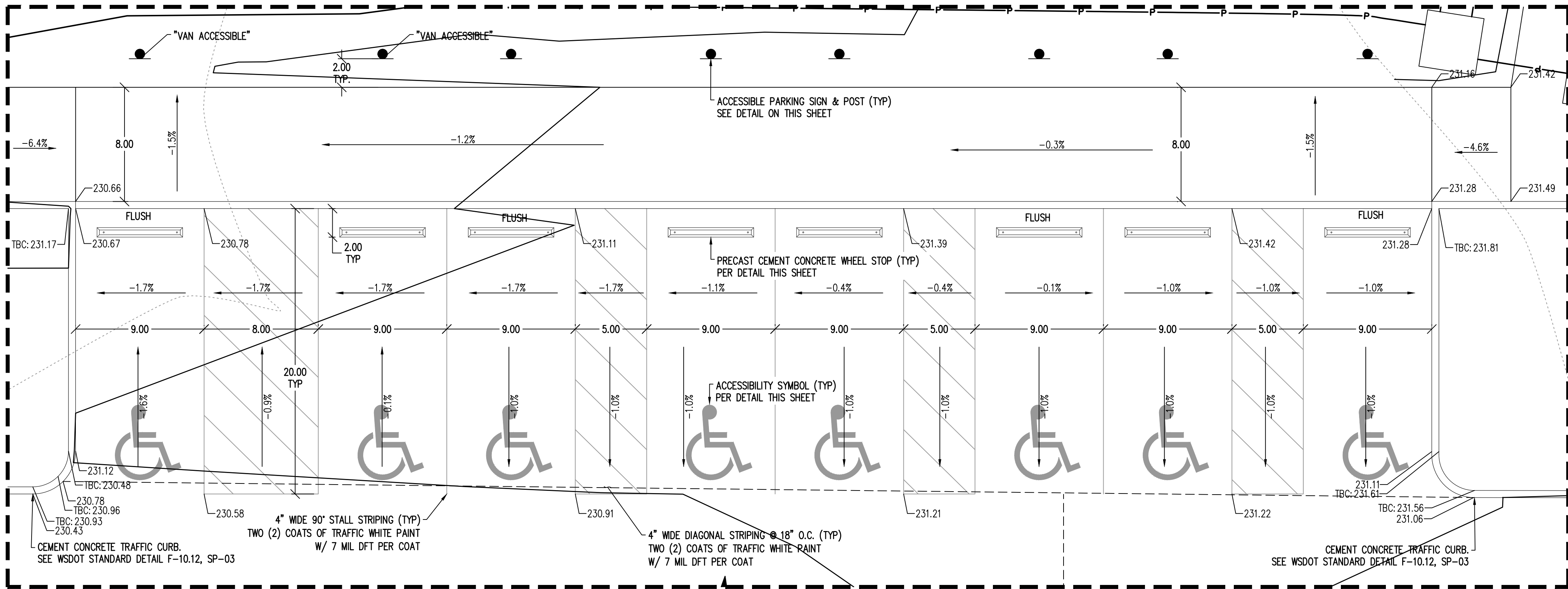
SITE AND PAVING PLAN

RAC PARKING LOT EXPANSION
8345 STEILACOOM RD SE
LACEY, WA

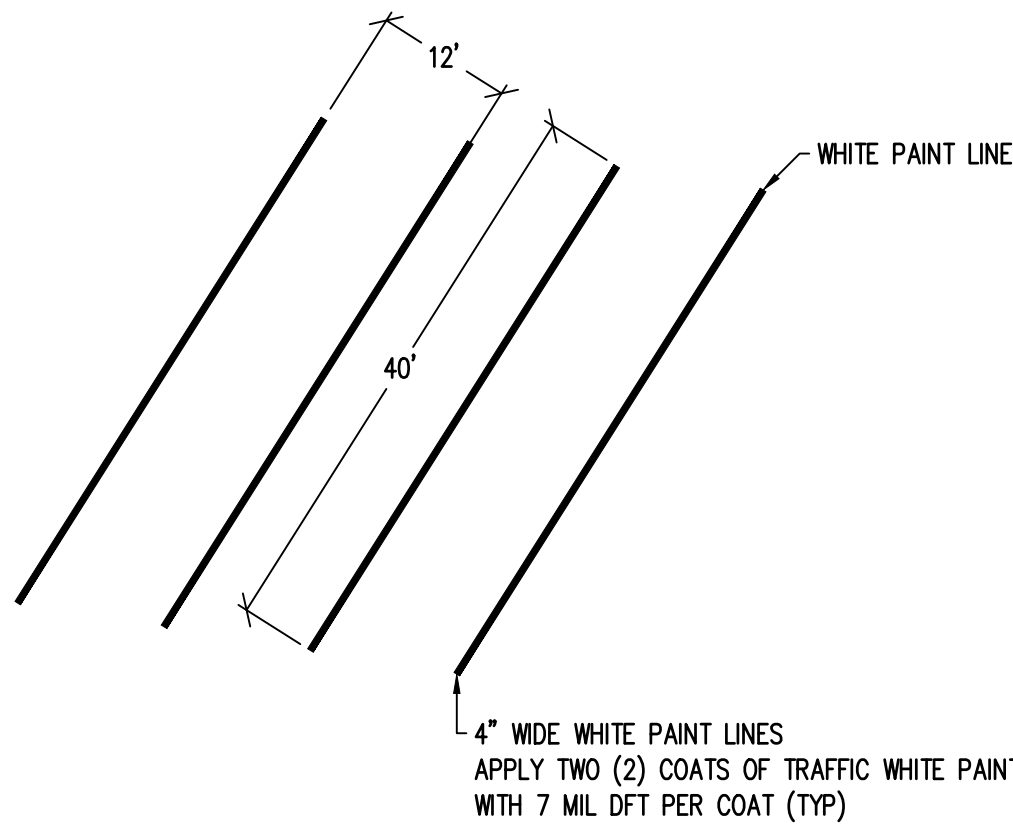
09/13/2023

DESIGNER:	K. GANS
DRAWN BY:	W. HOLM
APPROVED BY:	W. HOLM
DATE:	SEPT. 13, 2023
JOB NO:	22-000313
DRAWING FILE NO:	22-000313 SP-01
DRAWING NO:	SP-01
SHEET NO:	08 OF 45

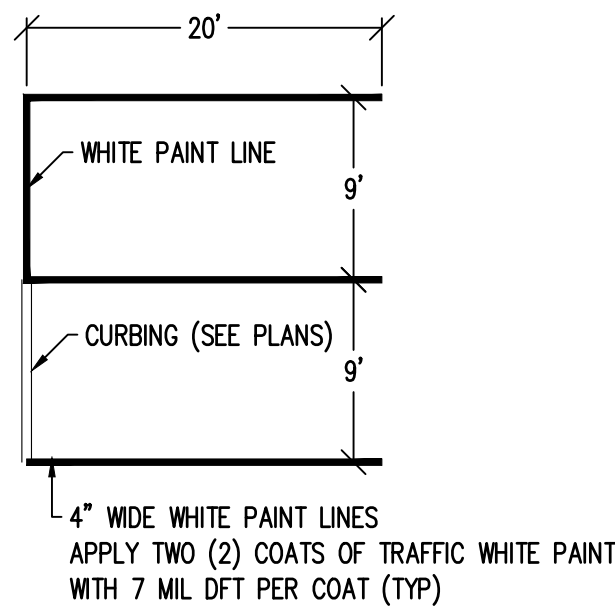
SP-02 2023 11/16/2023 User: whitney.g.holm
PROJECTS\2023\011 OF LACEY\22-000313 RAC PARKING LOT DESIGN\CADD\22-000313 SP-02.DWG



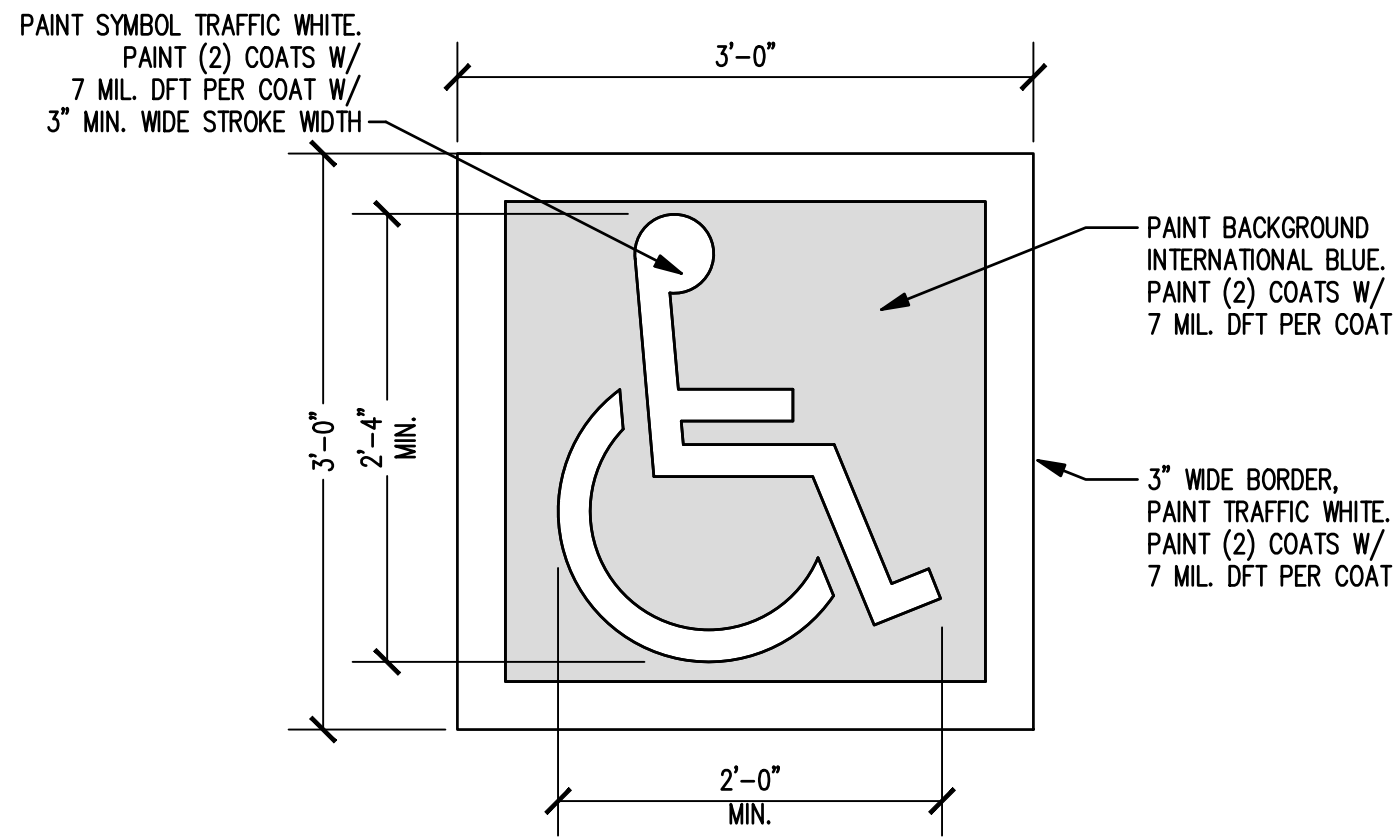
ACCESSIBLE PARKING STALLS
1" = 5'



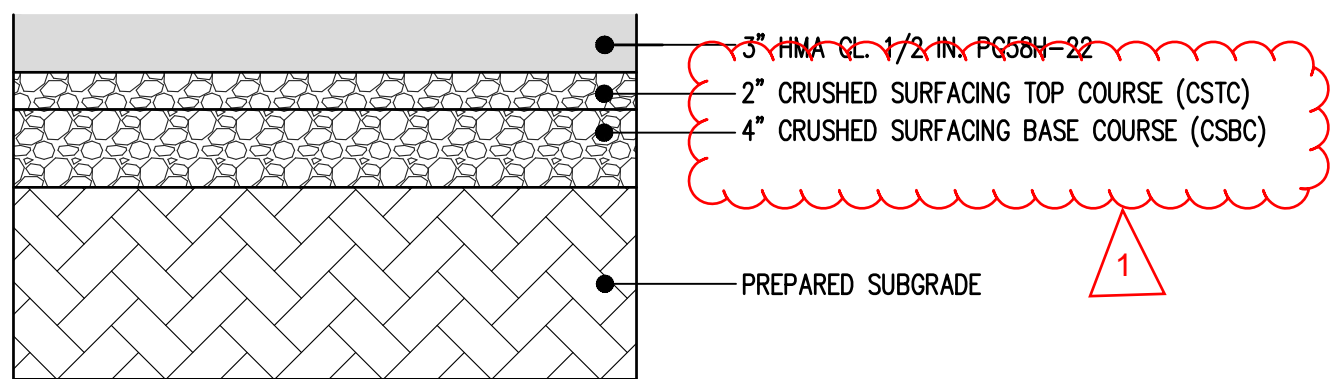
BUS PARKING STALL
NTS



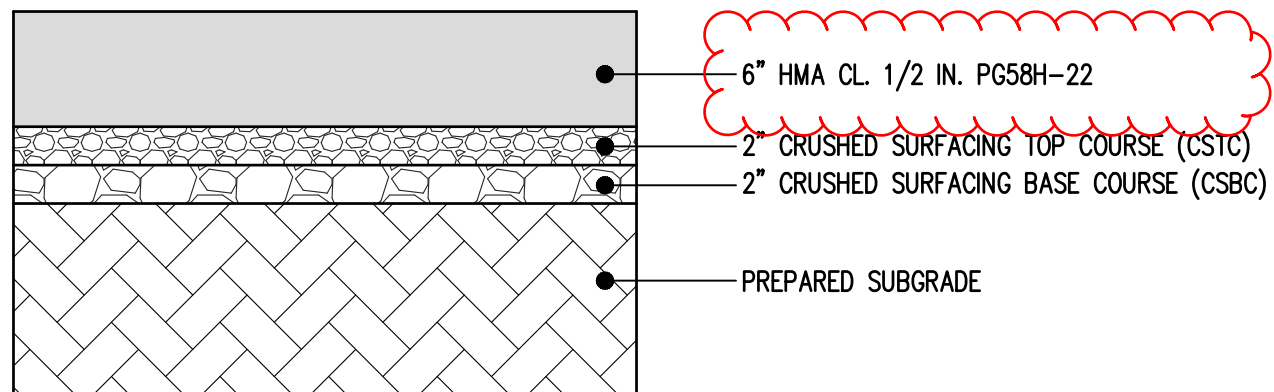
AUTO PARKING STALL
NTS



ACCESSIBILITY SYMBOL
NTS



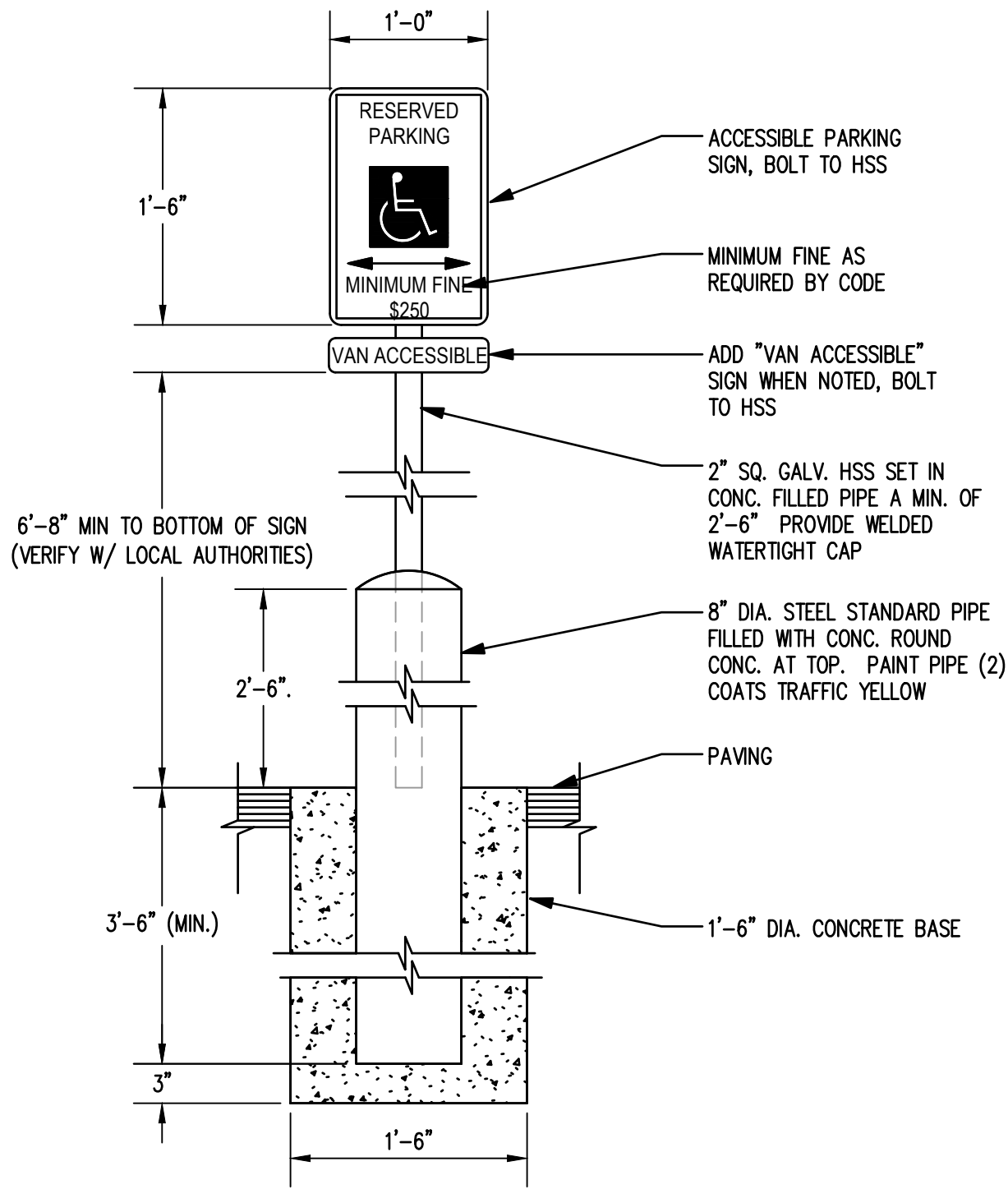
LIGHT DUTY ASPHALT PAVING
NTS



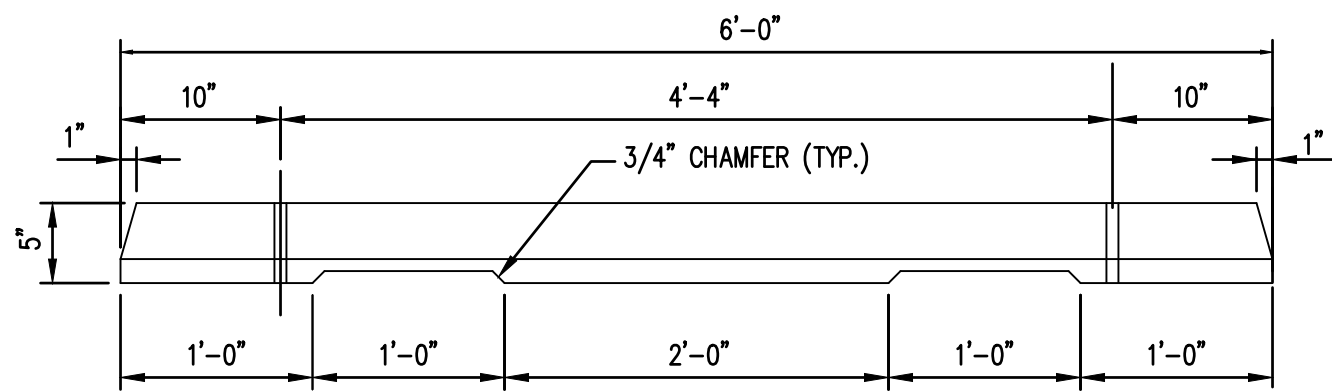
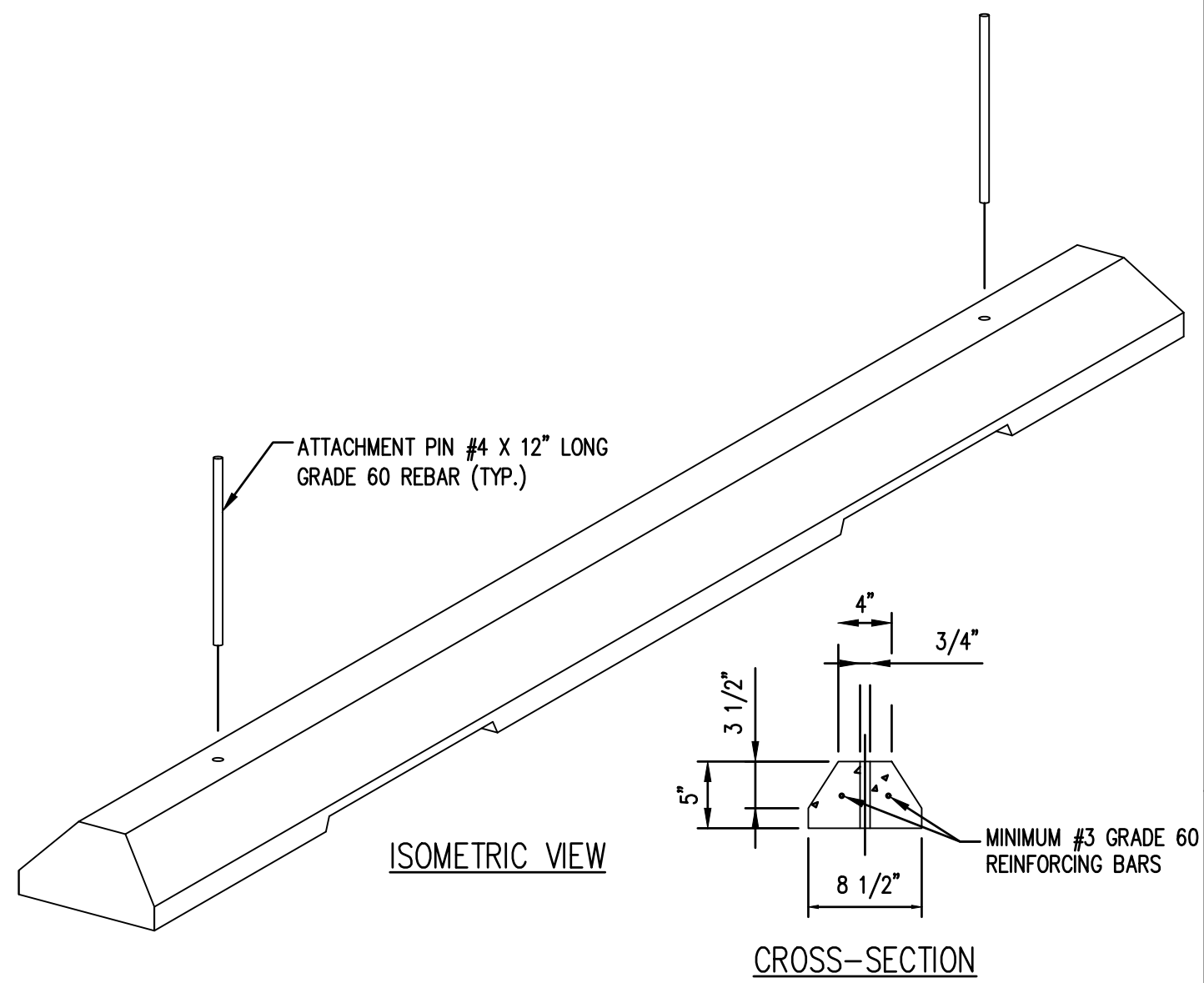
HEAVY DUTY ASPHALT PAVING
NTS

- NOTES
1. THE ASPHALT MIXTURE AND ASPHALT CEMENT SHALL CONFORM TO THE 2023 WSDOT STANDARD SPECIFICATION SECTION 5-04 FOR ASPHALT BINDER.
 2. MATERIALS SHALL MEET THE 2023 WSDOT STANDARD SPECIFICATION PROVIDED IN THE GEOTECHNICAL REPORT.
 3. MATERIALS AND CONSTRUCTION OF PAVEMENTS FOR PROJECT SHALL BE COMPLETED IN ACCORDANCE WITH THE REQUIREMENTS AND SPECIFICATIONS OF THE GEOTECHNICAL ENGINEERING REPORT THAT WAS FINALIZED BY LANDAU ASSOCIATES INC, ON SEPTEMBER 1ST 2022.
 4. THE AGGREGATE BASE COURSE MATERIALS SHOULD BE PLACED ON A STABLE SUBGRADE AND COMPACTED TO AT LEAST 95 PERCENT OF THE MATERIAL'S MODIFIED PROCTOR MAXIMUM DRY DENSITY (ASTM D1557)

TYPICAL ASPHALT PAVEMENT SECTIONS
NTS



ACCESSIBLE PARKING SIGN AND POST
NTS



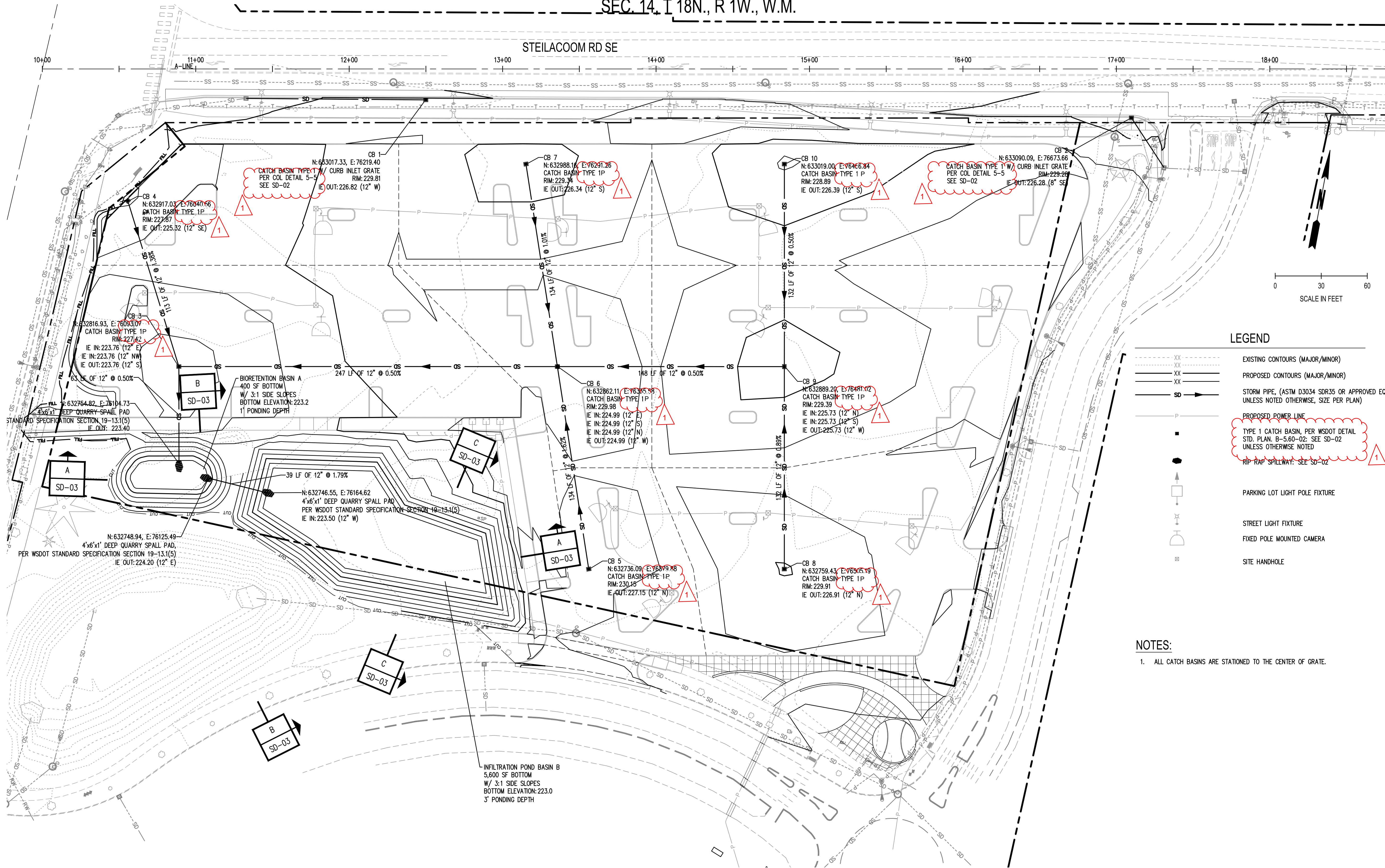
- GENERAL NOTES:
1. CONCRETE FOR WHEEL STOP: MINIMUM 3,000 PSI IN 28 DAYS
 2. REINFORCING STEEL: PER ASTM A615, GRADE 60
 3. ATTACHMENT PINS SHALL HAVE 7 INCH EMBEDMENT.

PRECAST CONCRETE WHEEL STOP
NTS

REVISIONS	DATE	BY
1		
ADDENDUM 1		
SCJ ALLIANCE CONSULTING SERVICES		
8730 TALON LANE NE SUITE 200, LACEY, WA 98516		
P: 360.752.2100 F: 360.752.1509		
CITY OF LACEY, WASHINGTON		
DEPARTMENT OF PUBLIC WORKS		
420 COLLEGE STREET S.E.		
LACEY, WA 98503-1238		
(360) 491-5800		
PROJECT NAME		
RAC PARKING LOT EXPANSION		
8345 STEILACOOM RD SE		
LACEY, WA		
SHEET TITLE		
SITE PLAN NOTES AND DETAILS		
SEAL:		
WHITNEY G. HOLM		
REGISTERED PROFESSIONAL ENGINEER		
09/13/2023		
DESIGNER:		
K. GANS		
DRAWN BY:		
W. HOLM		
APPROVED BY:		
W. HOLM		
DATE:		
SEPT. 13, 2023		
JOB NO:		
22-000313		
DRAWING FILE NO:		
22-000313 SP-02		
DRAWING NO:		
SP-02		
SHEET NO:		
09 OF 45		

SEC. 14, T 18N., R 1W., W.M.

STEILACOOM RD SE



LEGEND

- XX --- EXISTING CONTOURS (MAJOR/MINOR)
- XX --- PROPOSED CONTOURS (MAJOR/MINOR)
- SD --- STORM PIPE, (ASTM D3034 SDR35 OR APPROVED EQUAL UNLESS NOTED OTHERWISE, SIZE PER PLAN)
- P --- PROPOSED POWER LINE
- TYPE 1 CATCH BASIN, PER WSDOT DETAIL STD. PLAN. B-5.60-02: SEE SD-02 UNLESS OTHERWISE NOTED
- RIP-RAP SPILLWAY: SEE SD-02
- PARKING LOT LIGHT POLE FIXTURE
- STREET LIGHT FIXTURE
- FIXED POLE MOUNTED CAMERA
- SITE HANDHOLE

NOTES:

- ALL CATCH BASINS ARE STATIONED TO THE CENTER OF GRATE.

CALL BEFORE YOU DIG

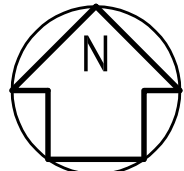
THE CONTRACTOR SHALL BE FULLY RESPONSIBLE FOR THE LOCATION AND PROTECTION OF ALL EXISTING UTILITIES. THE CONTRACTOR SHALL VERIFY ALL UTILITY LOCATIONS PRIOR TO CONSTRUCTION BY CALLING THE UNDERGROUND LOCATE LINE AT 811 OR 1.800.424.5555 A MINIMUM OF 48 HOURS PRIOR TO ANY EXCAVATION.

BY	
DATE	
REVISIONS	1 ADDENDUM 1
CITY OF LACEY, WASHINGTON DEPARTMENT OF PUBLIC WORKS 420 COLLEGE STREET S.E. LACEY, WA 98503-1238 (360) 491-5800	
DRAINAGE PLAN	
RAC PARKING LOT EXPANSION 8345 STEILACOOM RD SE LACEY, WA	
SHEET TITLE	
PROJECT NAME	
SEAL	
DESIGNER:	K. GANIS
DRAWN BY:	W. HOLM
APPROVED BY:	W. HOLM
DATE:	SEPT. 13, 2023
JOB NO:	22-000313
DRAWING FILE NO:	22-000313 SD-01
DRAWING NO:	SD-01
SHEET NO:	15 OF 45

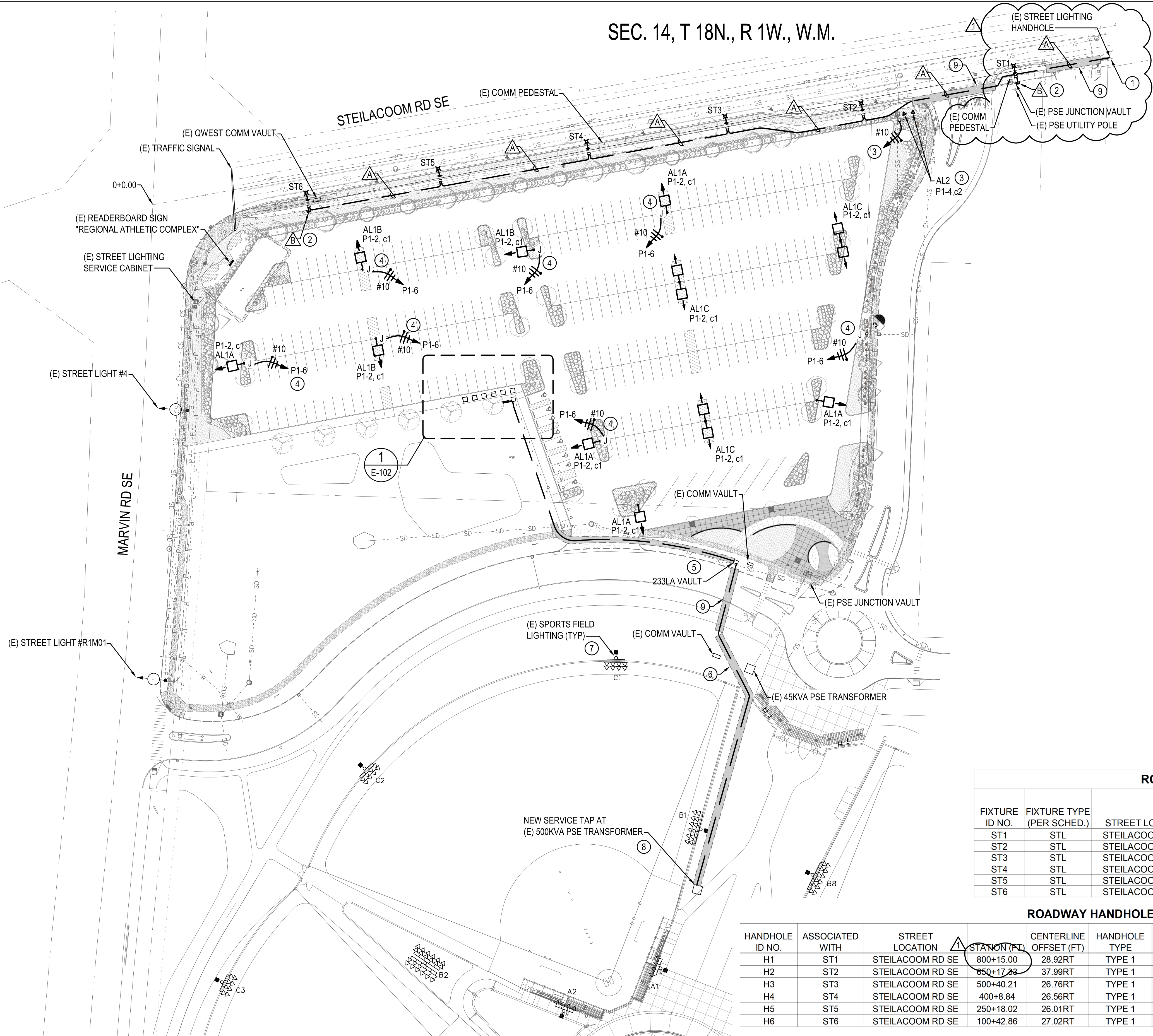
Sep 22, 2023 11:12:22am - User: Michael Meyerdrick
R:\DWG\222\222-147\DRAWINGS\ELECTRICAL\222-147_E-101.DWG

CALL BEFORE YOU DIG
THE CONTRACTOR SHALL BE FULLY RESPONSIBLE FOR THE LOCATION AND PROTECTION OF ALL EXISTING UTILITIES. THE CONTRACTOR SHALL VERIFY ALL UTILITY LOCATIONS PRIOR TO CONSTRUCTION BY CALLING THE UNDERGROUND LOCATE LINE AT 811 OR 1.800.424.5555 A MINIMUM OF 28 HOURS PRIOR TO ANY EXCAVATION.

1 **ELECTRICAL SITE PLAN**
SCALE: 1" = 50'-0"



SEC. 14, T 18N., R 1W., W.M.



- GENERAL NOTES**
- COORDINATE ALL WORK WITH THE CITY OF LACEY PROJECT MANAGER. COORDINATE ALL OUTAGES A MINIMUM OF 2 WEEKS IN ADVANCE.
 - COORDINATE ALL UTILITY WORK WITH PSE PRIOR TO STARTING.
 - PROVIDE AND INSTALL A COMPLETE STREET LIGHTING SYSTEM PER THE CITY OF LACEY STANDARDS
 - REFER TO E-702 FOR STREET LIGHTING DETAILS.
 - REFER TO E-601 ELECTRICAL ONE-LINE DIAGRAM FOR ADDITIONAL CONDUIT AND FEEDER INFORMATION.
 - PROVIDE ANY UTILITY LOCATES AND POTHOLING REQUIRED TO AVOID CONFLICTS WITH EXISTING UNDERGROUND INFRASTRUCTURE.
 - ROADWAY LUMINAIRE STATIONING AND CENTERLINE OFFSET MEASURED TO CENTER OF POLE BASE. EXACT LOCATIONS SHALL BE COORDINATED WITH THE CIVIL ENGINEER AND ACTUAL SITE CONDITIONS.
 - ROADWAY HANDHOLE STATIONING AND CENTERLINE OFFSET MEASURED TO CENTER FRONT NEAREST CURB FACE. EXACT LOCATIONS SHALL BE COORDINATED WITH THE CIVIL ENGINEER AND ACTUAL SITE CONDITIONS.

- CONSTRUCTION NOTES**
- INTERCEPT, SPLICE, AND EXTEND EXISTING STREET LIGHTING CIRCUIT FROM EXISTING HANDHOLE. COORDINATE OUTAGE WITH THE OWNER PRIOR TO STARTING WORK. FOR COORDINATION OF OUTAGE, EXISTING STREET LIGHTING CABINET IS LOCATED AT THE INTERSECTION OF STEILACOOM RD AND VIEWPORT RD.
 - PROVIDE SPARE CONDUIT STUB ROUTED OUTSIDE THE FOOTPRINT OF THE SIDEWALK FOR FUTURE EXPANSION. PROVIDE WITH THREADED CAP AND REBAR MARKER BURIED 6" BELOW GRADE.
 - PROVIDE NEW FLOODLIGHTING AT EXISTING MONUMENT SIGN. MOUNT 4FT FROM FACE OF SIGN AND AIM FOR EVEN ILLUMINATION. PROVIDE 1" C. WITH (2) #10 CU & (1) #10 CU GND FROM NEW TYPE 2 HANDHOLE LOCATED ADJACENT TO SIGN TO NEW PANEL 'P1'.
 - PROVIDE NEMA 3R 277V-120V TRANSFORMER AND CONNECTION TO NEW CCTV ENCLOSURE. MOUNT TRANSFORMER INSIDE ENCLOSURE AND ROUTE CONDUIT AND WIRE CONCEALED IN POLE. SEE DETAIL 1/E-703 FOR ADDITIONAL INFORMATION. COORDINATE WITH CCTV INSTALLING VENDOR FOR ADDITIONAL REQUIREMENTS PRIOR TO ROUGH-IN.
 - PROVIDE NEW VAULT WITH SLIP RESISTANT LID IN EXISTING LANDSCAPING STRIP. MATCH RIM ELEVATION TO EXISTING ADJACENT GRADE.
 - PROVIDE POTHOLING AND/OR UTILITY LOCATES, AS REQUIRED, TO AVOID CONFLICTS WITH ANY EXISTING UNDERGROUND UTILITIES, THIS AREA.
 - EXISTING SPORTS FIELD LIGHTING TO REMAIN.
 - COORDINATE WITH PSE FOR SHUTDOWN AND CONNECTION OF SECONDARY FEEDER TAP AT EXISTING TRANSFORMER.
 - CUT, PATCH, AND REPAIR EXISTING ROADWAY. COORDINATE SCHEDULING WITH THE OWNER TO MINIMIZE TRAFFIC INTERRUPTIONS.

STREET LIGHTING FEEDER SCHEDULE

Copper				
#	CONDUIT SIZE	CONDUCTOR SIZE & QUANTITY	CIRCUIT TYPE	CIRCUIT NUMBER (EXISTING CABINET)
A	2" PVC	(2) #8 & (1) #8 GND	ILLUMINATION	1
B	2" PVC	PULLSTRING	SPARE	-

ROADWAY LUMINAIRE SCHEDULE

FIXTURE ID NO.	FIXTURE TYPE (PER SCHED.)	STREET LOCATION	STATION (FT)	CENTERLINE OFFSET (FT)	DISTRIBUTION TYPE	ARM LENGTH	POLE HEIGHT
ST1	STL	STEILACOOM RD SE	800+15.00	26.25RT	R3M	6'	30'
ST2	STL	STEILACOOM RD SE	850+17.33	34.50RT	R3M	6'	30'
ST3	STL	STEILACOOM RD SE	500+40.21	23.00RT	R3M	6'	30'
ST4	STL	STEILACOOM RD SE	400+8.84	22.00RT	R3M	6'	30'
ST5	STL	STEILACOOM RD SE	250+18.02	22.00RT	R3M	6'	30'
ST6	STL	STEILACOOM RD SE	100+42.86	22.00RT	R3M	6'	30'

ROADWAY HANDHOLE SCHEDULE

HANDHOLE ID NO.	ASSOCIATED WITH	STREET LOCATION	STATION (FT)	CENTERLINE OFFSET (FT)	HANDHOLE TYPE	HANDHOLE SIZE	COVER STYLE
H1	ST1	STEILACOOM RD SE	800+15.00	28.92RT	TYPE 1	17" x 22"	GALVANIZED STEEL LOCKING WITH LID TACK WELDED ON
H2	ST2	STEILACOOM RD SE	850+17.33	37.99RT	TYPE 1	17" x 22"	GALVANIZED STEEL LOCKING WITH LID TACK WELDED ON
H3	ST3	STEILACOOM RD SE	500+40.21	26.76RT	TYPE 1	17" x 22"	GALVANIZED STEEL LOCKING WITH LID TACK WELDED ON
H4	ST4	STEILACOOM RD SE	400+8.84	26.56RT	TYPE 1	17" x 22"	GALVANIZED STEEL LOCKING WITH LID TACK WELDED ON
H5	ST5	STEILACOOM RD SE	250+18.02	26.01RT	TYPE 1	17" x 22"	GALVANIZED STEEL LOCKING WITH LID TACK WELDED ON
H6	ST6	STEILACOOM RD SE	100+42.86	27.02RT	TYPE 1	17" x 22"	GALVANIZED STEEL LOCKING WITH LID TACK WELDED ON

BY					
DATE					
REVISIONS	ADDENDUM 1				
1					

SCJ ALLIANCE
CONSULTING SERVICES
8730 TALLON LANE NE, SUITE 200, LACEY, WA 98516
P: 360.352.1465 F: 360.352.1509
SCJALLIANCE.COM

ELECTRICAL SITE PLAN

PROJECT NAME:
RAC PARKING LOT EXPANSION
8345 STEILACOOM RD SE
LACEY, WA

SHEET TITLE:

SEAL:

DESIGNER:
MM

DRAWN BY:
JM

APPROVED BY:
BH

DATE:
SEPTEMBER 2023

JOB NO:
22-000313

DRAWING FILE NO:
222-147_E-101

DRAWING NO:
E-101

SHEET NO:
35 of 42

**SECTION 33 4211
STORMWATER GRAVITY PIPING**

PART 1 GENERAL

1.01 SECTION INCLUDES

- A. Stormwater drainage piping.
- B. Stormwater pipe accessories.

1.02 RELATED REQUIREMENTS

- A. Section 31 2316 - Excavation: Excavating of trenches.
- B. Section 31 2316.13 - Trenching: Excavating, bedding, and backfilling.
- C. Section 33 0561 - Concrete Manholes.
- D. Section 33 4230 - Stormwater Drains.

1.03 PRICE AND PAYMENT PROCEDURES

- A. See Special Provision Section D, for additional unit price requirements.

1.04 REFERENCE STANDARDS

- A. AASHTO M 252 - Standard Specification for Corrugated Polyethylene Drainage Pipe 2021.
- B. ASTM D2321 - Standard Practice for Underground Installation of Thermoplastic Pipe for Sewers and Other Gravity-Flow Applications 2020.
- C. ASTM D3350 - Standard Specification for Polyethylene Plastics Pipe and Fittings Materials 2021.

1.05 ADMINISTRATIVE REQUIREMENTS

- A. Coordination: Coordinate the installation of stormwater gravity piping with size, location and installation of stormwater drains according to Section 33 4230.

1.06 SUBMITTALS

- A. See Section D - Special Provisions for Administrative requirements and submittal procedures.

PART 2 PRODUCTS

2.01 STORMWATER PIPE MATERIALS

- A. Provide products that comply with WSDOT Standards.
- B. Stormpipe as specified in WSDOT Standard Specifications, Section 7-04.2

2.02 PIPE ACCESSORIES

- A. Trace Wire: Magnetic detectable conductor, clear plastic covering, imprinted with "Stormwater Service" in large letters.
- B. Flared End Section:

PART 3 EXECUTION

3.01 TRENCHING

- A. See Section 31 2316.13 - Trenching for additional requirements.
- B. Backfill around sides and to top of pipe with cover fill, tamp in place and compact, then complete backfilling.

3.02 INSTALLATION

- A. Install pipe, fittings, and accessories in accordance with manufacturer's instructions. Seal watertight.
 - 1. Plastic Pipe: Also comply with ASTM D2321.
- B. Lay pipe to slope gradients noted on layout drawings; with maximum variation from true slope of 1/8 inch (3 mm) in 10 feet (3 m).

- C. Connect to building storm drainage system, foundation drainage system, and utility/municipal system.
- D. Install continuous trace wire 6 inches (150 mm) above top of pipe; coordinate with Section 31 2316.13.

3.03 PROTECTION

- A. Protect pipe and bedding cover from damage or displacement until backfilling operation is in progress.

END OF SECTION