

# SUF

**SOUND URBAN FORESTRY, LLC**

**Appraisals, Planning, Urban Landscape Design and Management**

**Williams Crossing**

**5216, 5224 and 5228 NE 15<sup>th</sup> Ave**

**Case #23-0248**

**TPNs 11809310100, 18809310700 & 11809310600**

Preliminary Tree Protection Plan

---

Prepared for: City of Lacey, Community and Economic Development Dept.

Prepared by: Kevin M. McFarland, SUF  
City of Lacey, Tree Protection Professional

Date: 2/16/2024

## **Introduction**

This report has been developed as part of the preliminary planning requirements for the proposed multi-family project along 15<sup>th</sup> Avenue in Lacey, Washington. I visited the site on January 29, 2024 to review the project, the proposed tree removal and tree protection measures.

## **Vegetation Description**

The vegetation within the property is quite diverse and contains a mixture of former pasture with large, open grown trees at the southern end, native and landscape trees associated with the residence and four types of native forest that cover the remaining 75% of the site. Please reference the aerial below for the approximate areas.

Pasture: Southern 1/3 of the property. Mixture of field grass and 13 large Douglas firs measuring 30-65" DBH in fair to good condition.

Landscape Area: Mixture of six planted and native trees around the residence. Includes two 36" & 50" western red cedars, 18" blue spruce, 40" giant sequoia, 14" bird cherry and a 16" apple.

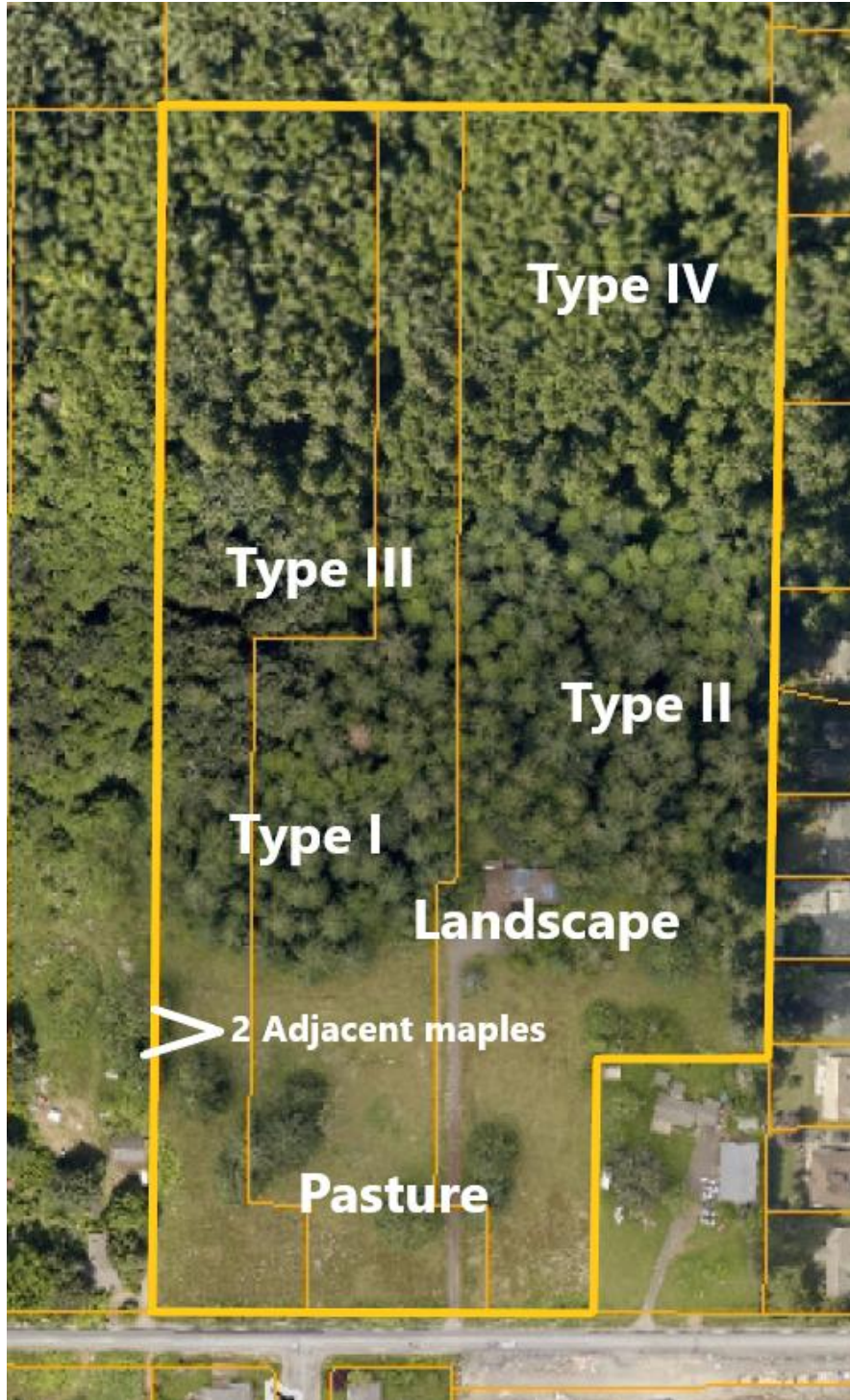
Forest Cover Type I: Located to the west of the house. Mixture of 12-24" Douglas fir, 16-20" red alder and 1-16" big leaf maple.

Forest Cover Type II: Located to the north of the house. Mixture of 2-14" big leaf maple and 22-50" cedar.

Forest Cover Type III: Mixture of 6-36" Douglas fir, 1-40" big leaf maple, 12-32" cedar, 12-20" alder and 1-18" western hemlock.

Forest Cover Type IV: This type covers the majority of the forested area and includes the wetland. It is dominated by 6-22" alder and also includes 8-26" cedar, 2-18" big leaf maple and 6-18" Douglas fir.

Aerial of Project Site and Vegetation Types



## **Proposed Tree Removal**

Without having the clearing limits marked in the field, it is difficult to determine the number of trees to be removed. Based on the site plan I have been provided, it appears that all trees within the former pasture, around the house, within Forest Cover Type I and 50% of Type II will be removed.

## **Off-Site Trees**

There are two big leaf maples measuring 20" & 24" along the western perimeter and adjacent to the pasture that may be affected by the grading associated with this project. There are trees along the eastern perimeter that may be impacted as well.

## **Tree Retention and Protection**

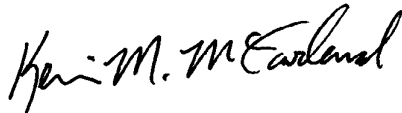
The majority of the trees to be retained are within the northern half of the property and are associated with the wetland and buffer. At this time, a thorough evaluation of the edge trees cannot be provided. Clearing limits will need to be staked in order to assess these trees and determine the protection measures necessary to reduce damage to trees to be retained.

I have many concerns about the water quality treatment and infiltration pond indicated to the north of the complex. It is my understanding that this is only temporary and the impacts on an area of tree retention is great. Not only will it result in the unnecessary removal of many healthy trees, it will create a new forest edge in the middle of a cohesive stand. The fallout will extend far beyond the edges of the pond. First and foremost, I am not in support of the location. If there are no options, the location of the pipe and pond will need to be staked so that I can develop a thorough protection plan.

## **Final Comments**

In order to provide a more complete protection plan, I will need to be provided the grading plans and the clearing limits will need to be clearly staked in the field. This will be done without the use of equipment and with minimal impacts to the trees.

Professionally submitted,



Kevin M. McFarland, Principal  
Sound Urban Forestry, LLC  
ISA Certified Arborist PN-0373 & ISA Tree Risk Assessment Qualified  
P.O. Box 489  
Tahuya, WA 98588