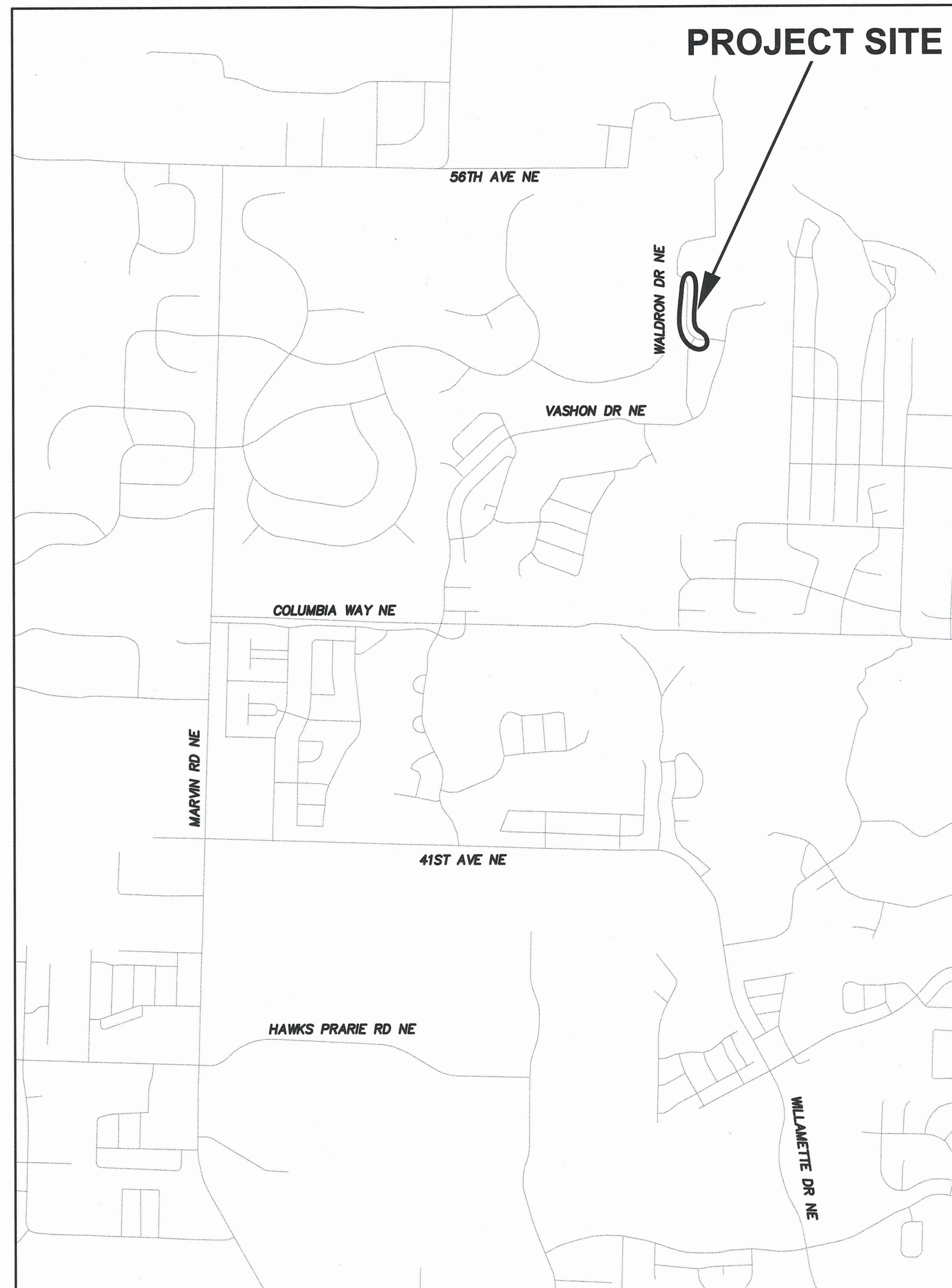


WALDRON DRIVE GRINDER EXTENSION

LACEY CONTRACT # PW 2023-44
SECTION 25, T19N, R1W, W.M.



LACEY CITY OFFICIALS

MAYOR: Andy Ryder
 DEPUTY MAYOR: Malcolm Miller
 CITY COUNCIL: Lenny Greenstein
 Michael Steadman
 Carolyn Cox
 Robin Vazquez
 Nicolas Dunning

CITY MANAGER: Rick Walk
 CITY ATTORNEY: David S. Schneider
 CITY ENGINEER: Aubrey Collier, P.E., S.E.
 DIRECTOR OF PUBLIC WORKS: Scott Egger, P.E.

SHEET INDEX

SHEET NO.	PAGE NO.	DESCRIPTION
1	-	COVER SHEET
2	G1	GENERAL NOTES
3	S1	SEWER PLAN AND PROFILE
4	D1	DETAIL SHEET

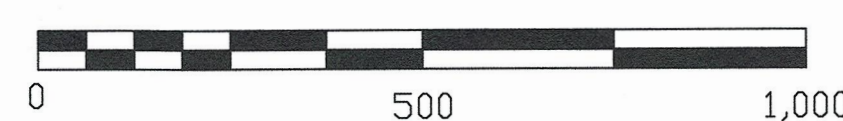

DIRECTOR OF PUBLIC WORKS

5/1/24
DATE



LACEY

VICINITY MAP
CITY OF LACEY, WASHINGTON
SCALE : 1" = 1000'



SAFETY IS IN YOUR HANDS.
EVERY DIG. EVERY TIME.



Lacey Dwg. Number :
D-23-35

BLOCK LEGEND:

NEW	EXISTING
CATCH BASIN TYPE 1	
STORM MANHOLE & CB TYPE 2	
FIRE HYDRANT	
AIR & VACUUM RELEASE VALVE	
WATER METER	
WATER VALVE	
REDUCER	
SPRINKLER HEAD	
SEWER MANHOLE	
SANITARY SEWER CLEAN OUT	
DUPLEX SIDE SEWER STUB	
GAS VALVE	
SIGN	
POLE ANCHOR	
POWER TRANSFORMER	
POWER POLE	
POWER VAULT	
STREET LIGHT	
JUNCTION BOX	
ELECTRICAL SERVICE	
CABLE TV PEDESTAL	
TELEPHONE MANHOLE	
TELEPHONE PEDESTAL	
TREE GRATE	
CONIFER TREE	
DECIDUOUS TREE	
COMMERCIAL SIGN	

LINETYPE LEGEND:

	CONSTRUCTION BASELINE
	EASEMENT
	ROAD CENTERLINE
	BARB WIRE FENCE
	CHAIN LINK FENCE
	CONCRETE FENCE
	ROCK FENCE
	WIRE FENCE
	WOOD FENCE
	GRAVEL
	DITCH
	STORM (PAINTED)
	SEWER (PAINTED)
	NEW SEWER
	RIGHT OF WAY
	OVERHEAD CABLE
	UNDERGROUND CABLE (PAINTED)
	GAS (PAINTED)
	OVERHEAD PHONE
	OVERHEAD FIBER OPTIC
	UNDERGROUND PHONE (PAINTED)
	UNDERGROUND FIBER OPTIC (PAINTED)
	OVERHEAD ELECTRIC
	UNDERGROUND ELECTRIC (PAINTED)
	WATER (PAINTED)
	EXISTING CONTOUR

HATCH LEGEND:

	AREA FOR 2" GRIND & OVERLAY
	GRAVEL
	CONCRETE

ABBREVIATIONS:

Δ	DEFLECTION ANGLE	S/W	SIDEWALK	V.P.I.	VERTICAL POINT OF CURVATURE
EP	EDGE OF PAVEMENT	C.S.B.C.	CRUSHED SURFACING BASE COURSE	V.P.T.	VERTICAL POINT OF TANGENCY
RT	RIGHT	C.S.T.C.	CRUSHED SURFACING TOP COURSE	EL.	ELEVATION
LT	LEFT	CL, \mathcal{C}	CENTERLINE	S.Y.	SQUARE YARD
I.E.	INVERT ELEVATION	CB	CATCH BASIN	C.Y.	CUBIC YARD
P.C.	POINT OF CURVATURE	N/A	NOT APPLICABLE	TYP.	TYPICAL
P.I.	POINT OF INTERSECTION	A/C	ASPHALT CONCRETE	SEP	SEPARATION
P.T.	POINT OF TANGENCY	ACP	ASPHALT CONCRETE PAVEMENT	L.F.	LINEAR FEET
R.	RADIUS	D.I.	DUCTILE IRON	F.M.	FORCE MAIN (SANITARY SEWER)
R.P.	RADIUS POINT	SD	STORM DRAIN	LUM.	DRIVE
R/W	RIGHT-OF-WAY	SS	SANITARY SEWER	PKWY.	PARKWAY
ROW	RIGHT-OF-WAY	RPBA	REDUCED PRESSURE BACKFLOW ASSEMBLY	CONST.	CONSTRUCTION
EX.	EXISTING	DIA, ϕ	DIAMETER	FT.	FOOT
EXIST.	EXISTING	A.P.	ANGLE POINT	D/W	DRIVEWAY
STA	STATION	TC	THURSTON COUNTY	APPROX.	APPROXIMATELY
				U.N.O.	UNLESS NOTED OTHERWISE

CONSTRUCTION NOTES:

- CALL 48 HOURS BEFORE YOU DIG 1-800-424-5555 OR 811.
- THE CONTRACTOR SHALL FIELD VERIFY UTILITY LOCATIONS PRIOR TO CONSTRUCTION.
- THE CONTRACTOR SHALL NOT REMOVE ANY TREES UNLESS INDICATED ON PLANS OR DIRECTED BY ENGINEER.
- GRINDING LIMITS AND PAVEMENT REPAIR LIMITS SHALL BE IDENTIFIED BY THE ENGINEER IN THE FIELD AND MAY VARY FROM THOSE SHOWN ON THE PLANS.
- THE CONTRACTOR SHALL RESTORE ALL LANDSCAPING TO EQUAL OR BETTER THAN ORIGINAL CONDITIONS AS DIRECTED BY THE ENGINEER.
- THE CONTRACTOR SHALL PROTECT ALL EXISTING SURVEY MONUMENTS AND PROPERTY CORNERS. THE CONTRACTOR SHALL BE RESPONSIBLE FOR ALL COSTS ASSOCIATED WITH RESTORING MONUMENTS OR PROPERTY CORNERS OUTSIDE OF THE CONSTRUCTION LIMITS.
- ALL PAVEMENT MARKINGS WITHIN THE PROJECT LIMITS SHALL BE REMOVED PRIOR TO PAVING AND REPLACED WITH IN-KIND MARKINGS.
- THE CONTRACTOR SHALL INSTALL INLET PROTECTION IN ALL CATCH BASINS WITHIN 500' OF THE PROJECT SITE PRIOR TO BEGINNING CONSTRUCTION.

SEWER NOTES:

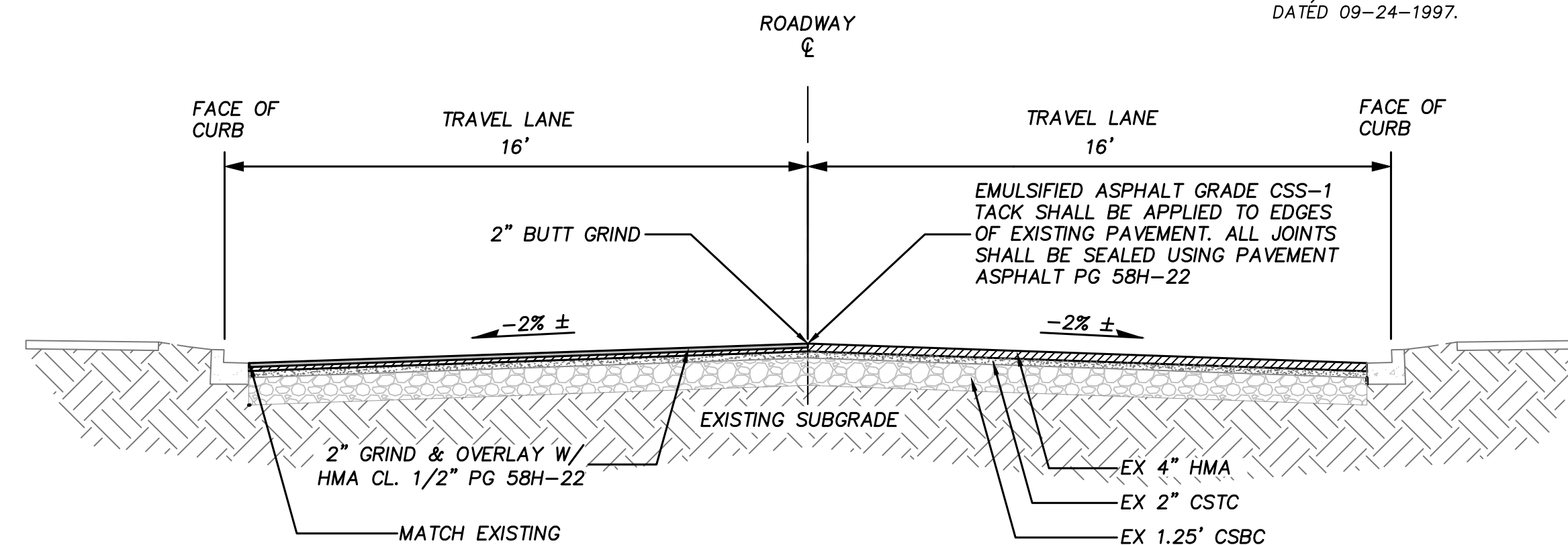
- SANITARY SEWER FORCE MAIN SHALL BE HDPE SDR 11.
- MAINTAIN A MINIMUM OF 18" VERTICAL SEPARATION BETWEEN WATER & SANITARY SEWER MAINS AND LATERALS. IF 18" VERTICAL SEPARATION CANNOT BE MET, THEN ALL APPLICABLE PROVISIONS FOR UNUSUAL CONDITIONS IN PERPENDICULAR CONSTRUCTION (AS OUTLINED IN THE DEPT. OF ECOLOGY'S CRITERIA FOR SEWAGE WORKS DESIGN) SHALL BE SATISFIED.

VERTICAL
THE CITY OF LACEY BENCHMARKS ARE BASED ON **NGVD 29** DATUM FROM PRIMARY CONTROL ESTABLISHED BY FEDERAL AND STATE AGENCIES TO FIRST OR SECOND ORDER ACCURACY. THE CITY OF LACEY'S BENCHMARKS ARE GENERALLY TO THIRD ORDER ACCURACY.

BENCHMARK
CITY OF LACEY BM#1548
SURVEY MARKER NAIL WITH FLASHER IN CONCRETE PAD OF SSMH AT THE INTERSECTION OF WALDRON DR NE AND HERRON ST NE. ELEV = 161.060

SOURCE OF UTILITY MARKINGS
SURFACE MARKINGS PROVIDED BY UTILITY NOTIFICATION CENTER
(callbeforeyoudig.org)
TICKET # 23242534, 23242555

BASIS OF BEARING
MERIDIAN IS WASHINGTON COORDINATE SYSTEM OF 1983/91 - SOUTH ZONE DERIVED FROM TIES TO HPGN STATIONS SANDERSON, MCKENNA AND CBL1110 AND TO WSDOT GPS STATIONS G259R, GP34005-2, GP34005-4, GP34101-32, GP34101-39, HC34-2, LUHR RM2, TS34-33, TS34-59 AND TO THURSTON COUNTY GPS STATIONS U-531, AT-194, AT-352, AT-355, AT-447, AT449 AND AT-478. DISTANCES SHOWN ARE GROUND SCALE U.S. SURVEY FEET. COMBINED SCALE FACTOR (GROUND TO GRID) IS 0.999935701. SURVEY AF# 3111152 DATED 09-24-1997.



WALDRON DRIVE NE ROADWAY SECTION
N.T.S.

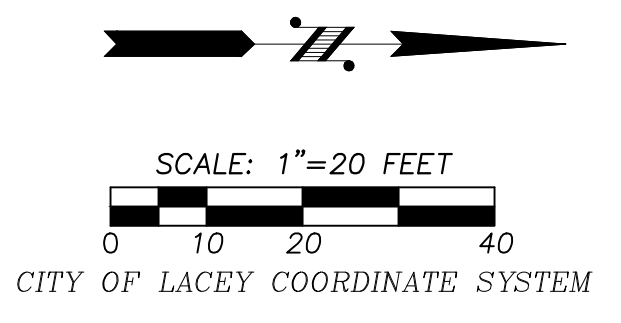
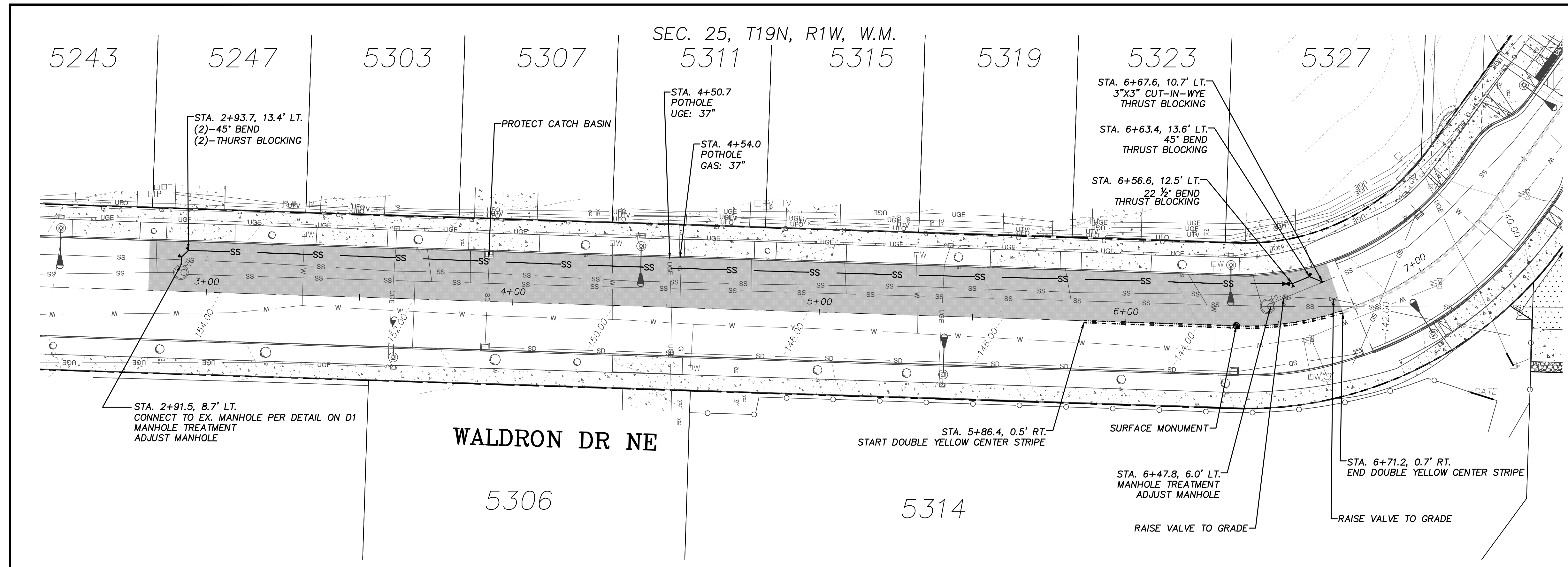
CITY OF LACEY, WASHINGTON
DEPARTMENT OF PUBLIC WORKS
420 COLLEGE STREET SE
LACEY, WA 98503-1238 (360) 491-5600



DESIGNED: RKJ
DRAFTED: RKJ
CHECKED: TEO
HORZ. SCALE: N/A
VERT. SCALE: N/A
FILE: COVER SHEET & NOTES

WALDRON GRINDER EXTENSION
GENERAL NOTES

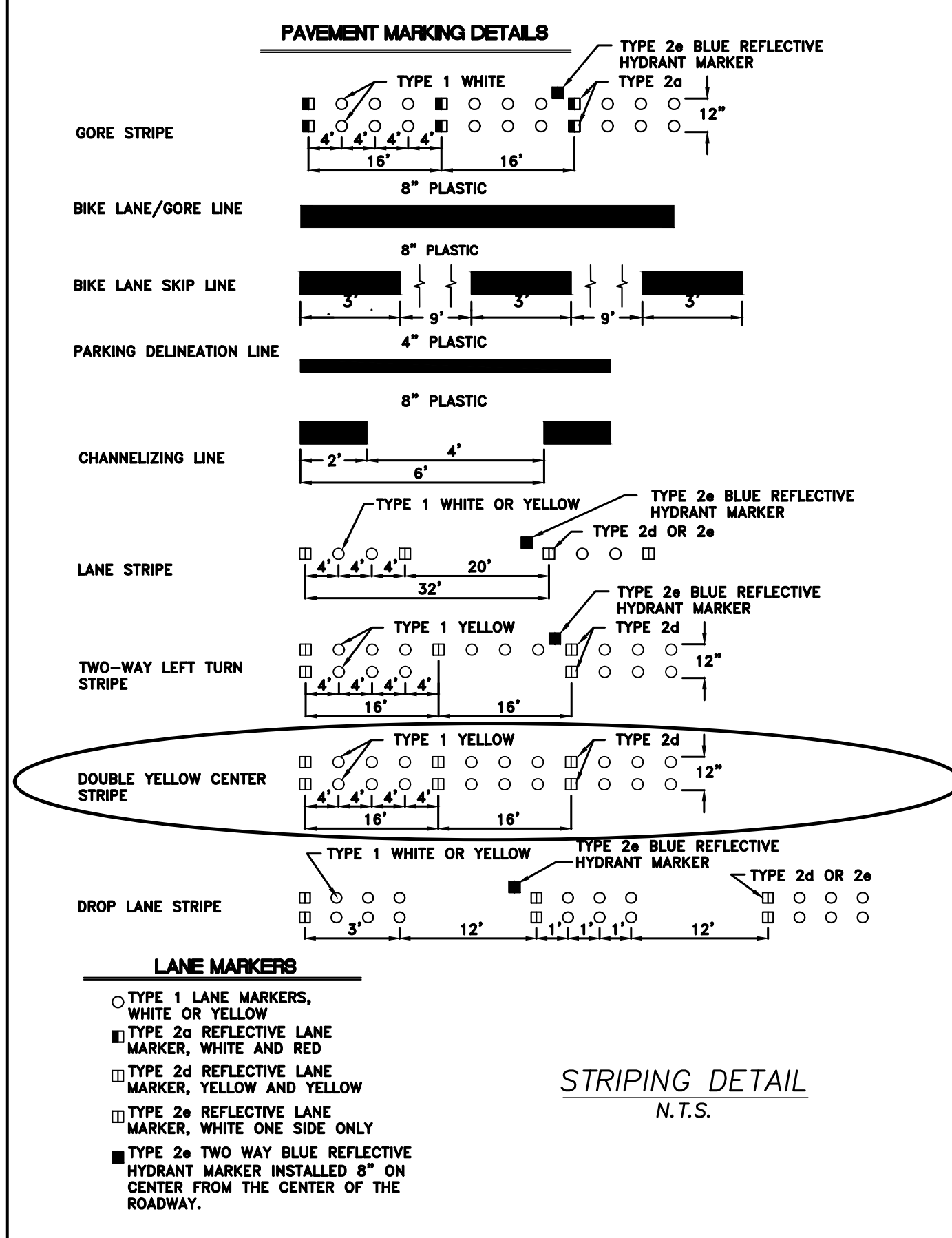
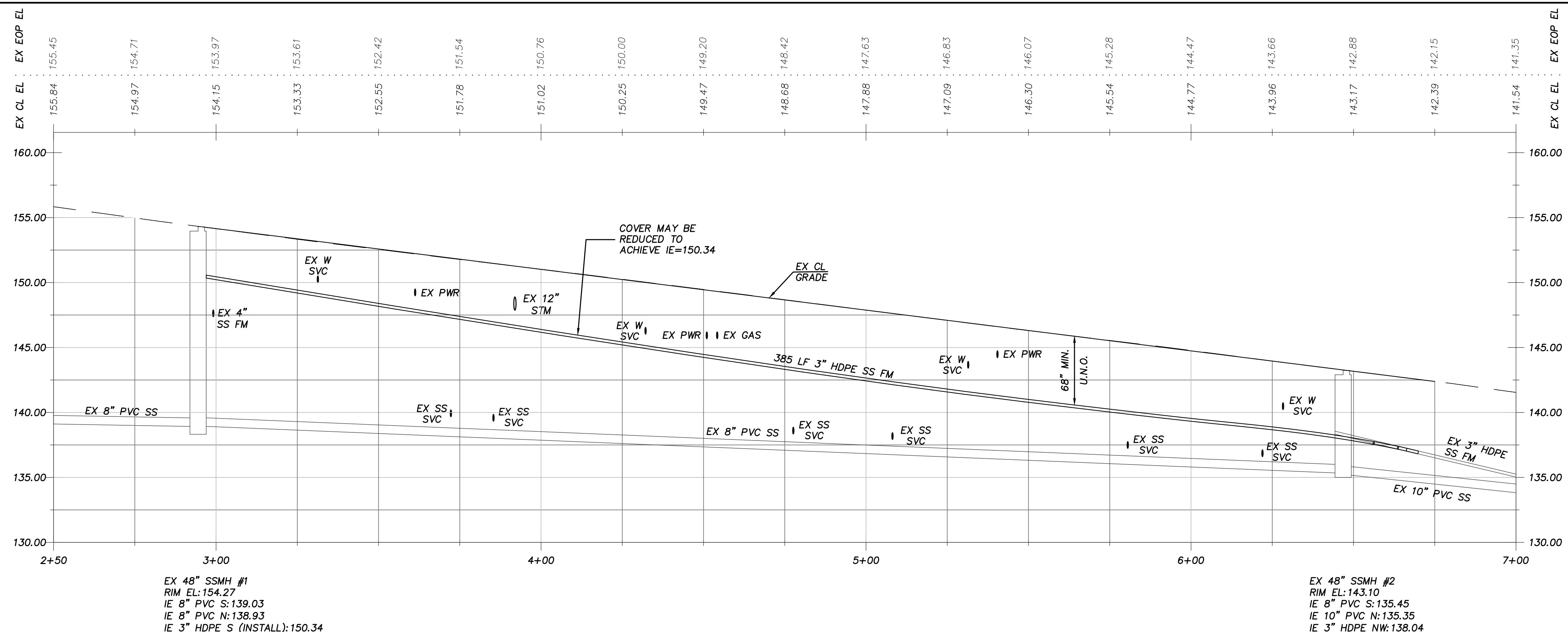
REVISION BLOCK			PAGE NO.	SHEET NO.
NO.	DATE	DESCRIPTION	G1	2
			DWG NO.	OF
			D-23-35	4



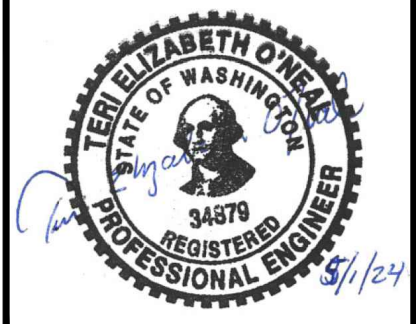
AREA FOR 2" GRIND & OVERLAY

CONSTRUCTION NOTES:

1. THE 3" SANITARY SEWER FORCE MAIN SHALL TIE INTO THE EXISTING SSMH 1 AT I.E. 150.34 PER THE DETAILS ON D1.
2. MAINTAIN 18" VERTICAL SEPARATION BETWEEN THE SSFM AND WATER SERVICES.
3. THE EXISTING PAVEMENT SEAM AT APPROX. STA. 6+71 SHALL BE THE NORTHERN LIMITS OF PAVING UNLESS OTHERWISE APPROVED BY THE ENGINEER.
4. THE CONTRACTOR SHALL FIELD VERIFY THE EXACT LOCATIONS AND FITTINGS REQUIRED TO CONNECT TO THE EXISTING MANHOLE AND F.M.
5. THE CONTRACTOR SHALL SET ALL MANHOLES AND VALVE BOXES WITHIN THE PAVING LIMITS FLUSH WITH FINAL GRADE.
6. MANHOLE TREATMENT SHALL BE PER 7-05.3(B) OF THE SPECIAL PROVISIONS.
7. ALL TREES ARE TO REMAIN. MINIMIZE DISTURBANCE TO LANDSCAPED AREAS.



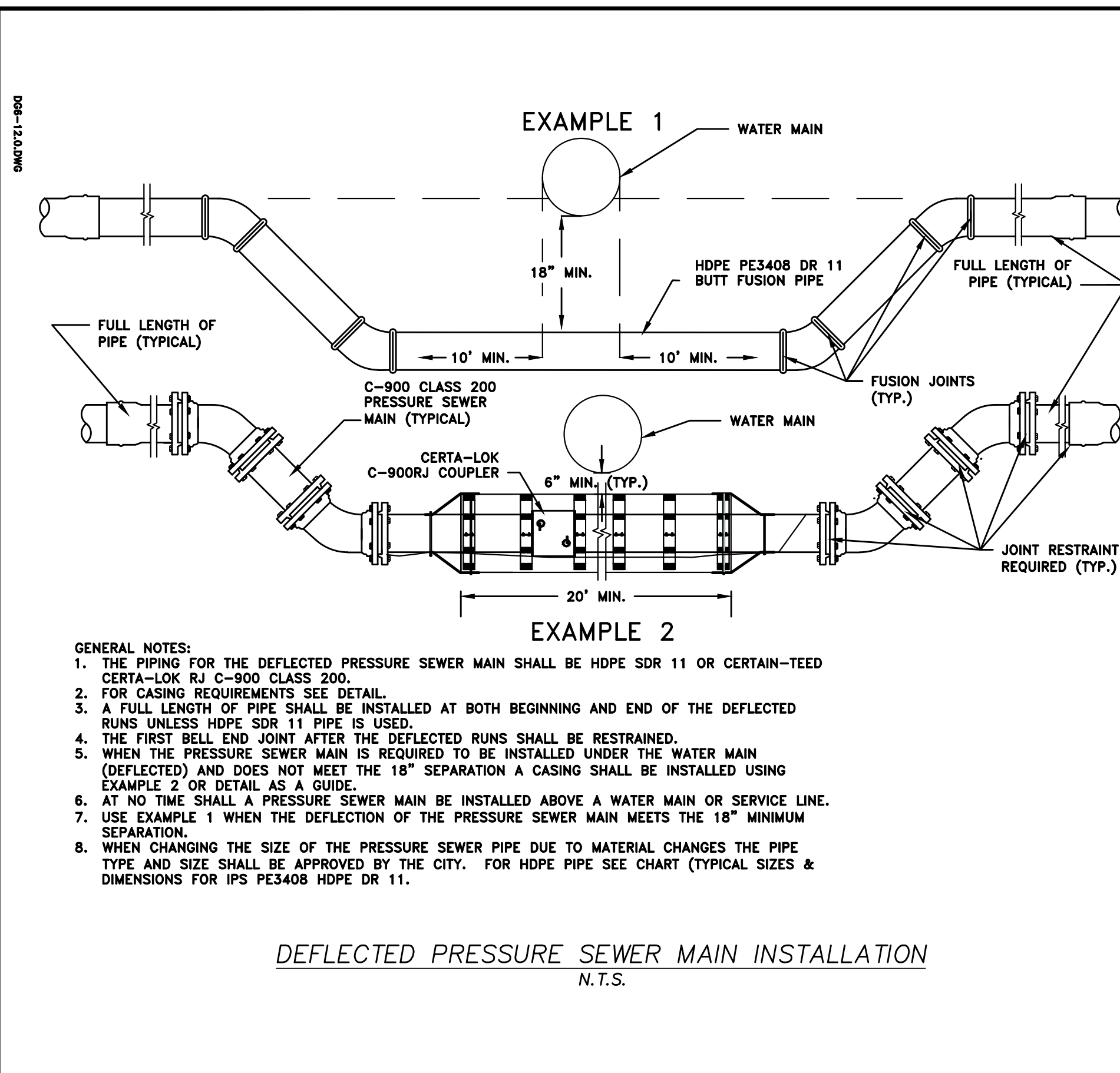
CITY OF LACEY, WASHINGTON
 DEPARTMENT OF PUBLIC WORKS
 420 COLLEGE STREET SE
 LACEY, WA 98503-1238 (360) 491-5600



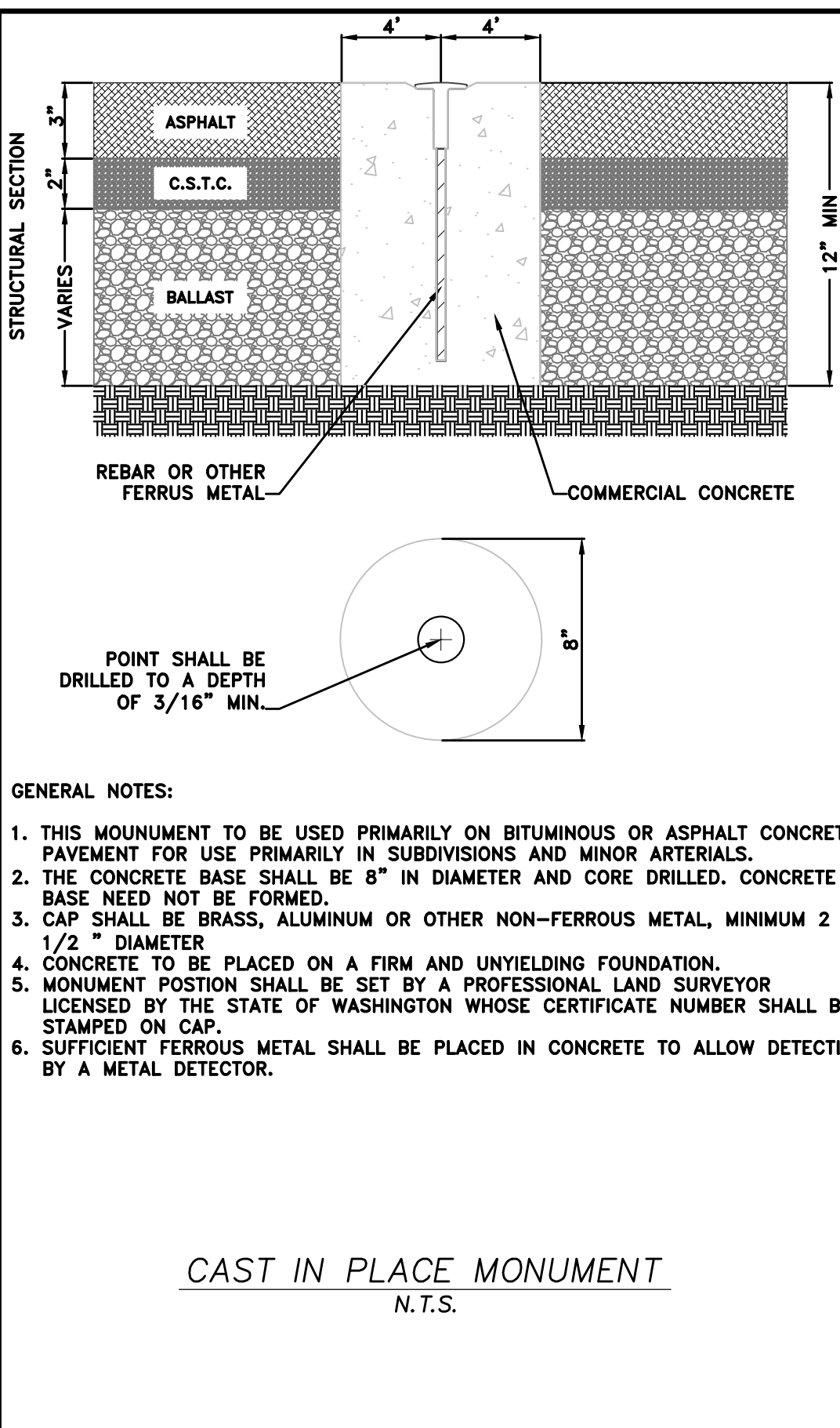
DESIGNED: RKJ
 DRAFTED: RKJ
 CHECKED: TEO
 HORZ. SCALE: 1"=20'
 VERT. SCALE: 1"=6'
 FILE: WALDRON GRINDER EXT

**WALDRON GRINDER EXTENSION
 PLAN & PROFILE**

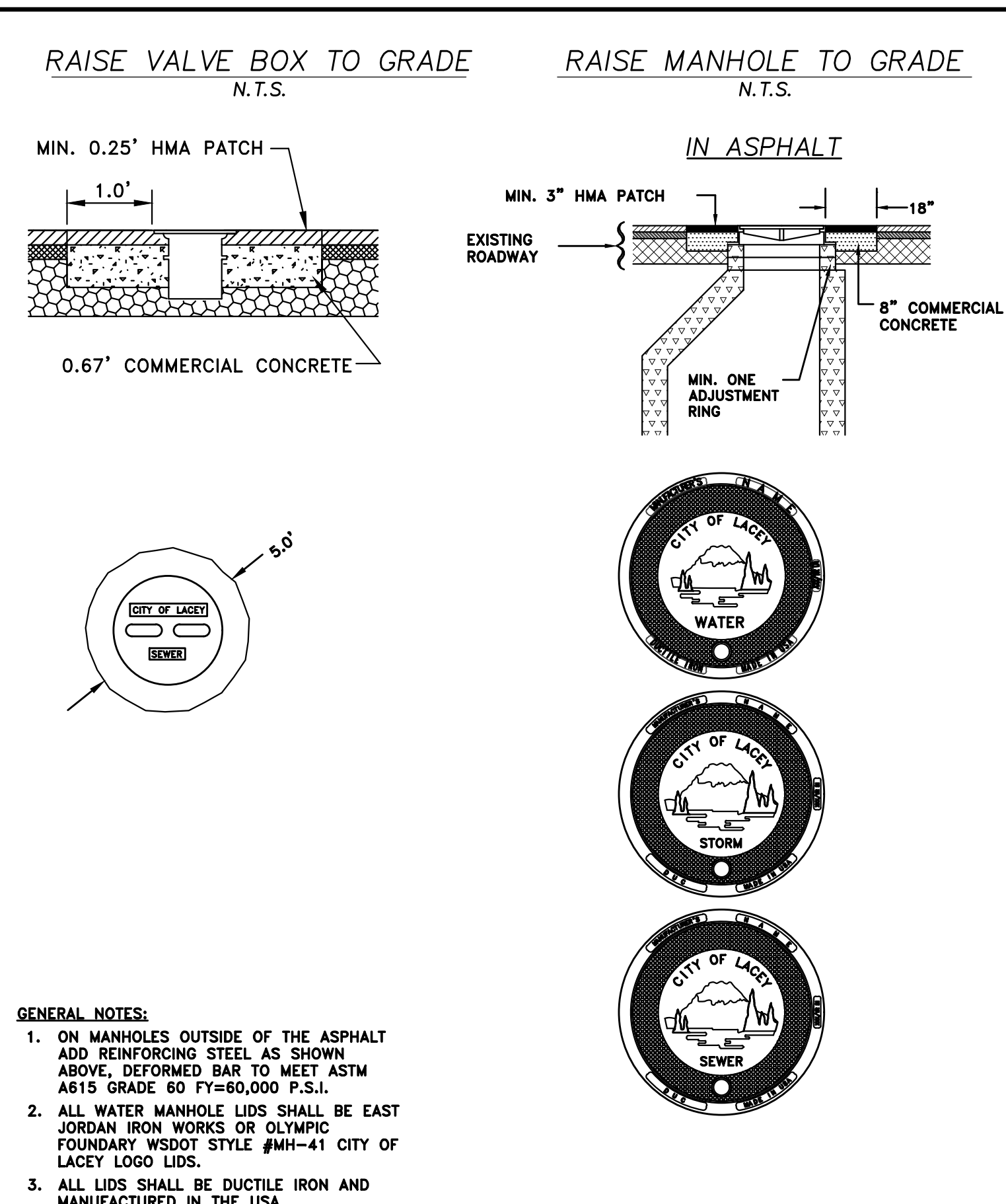
REVISION BLOCK			PAGE NO.	SHEET NO.
NO.	DATE	DESCRIPTION	S1	3
			DWG NO.	OF
			D-23-35	4



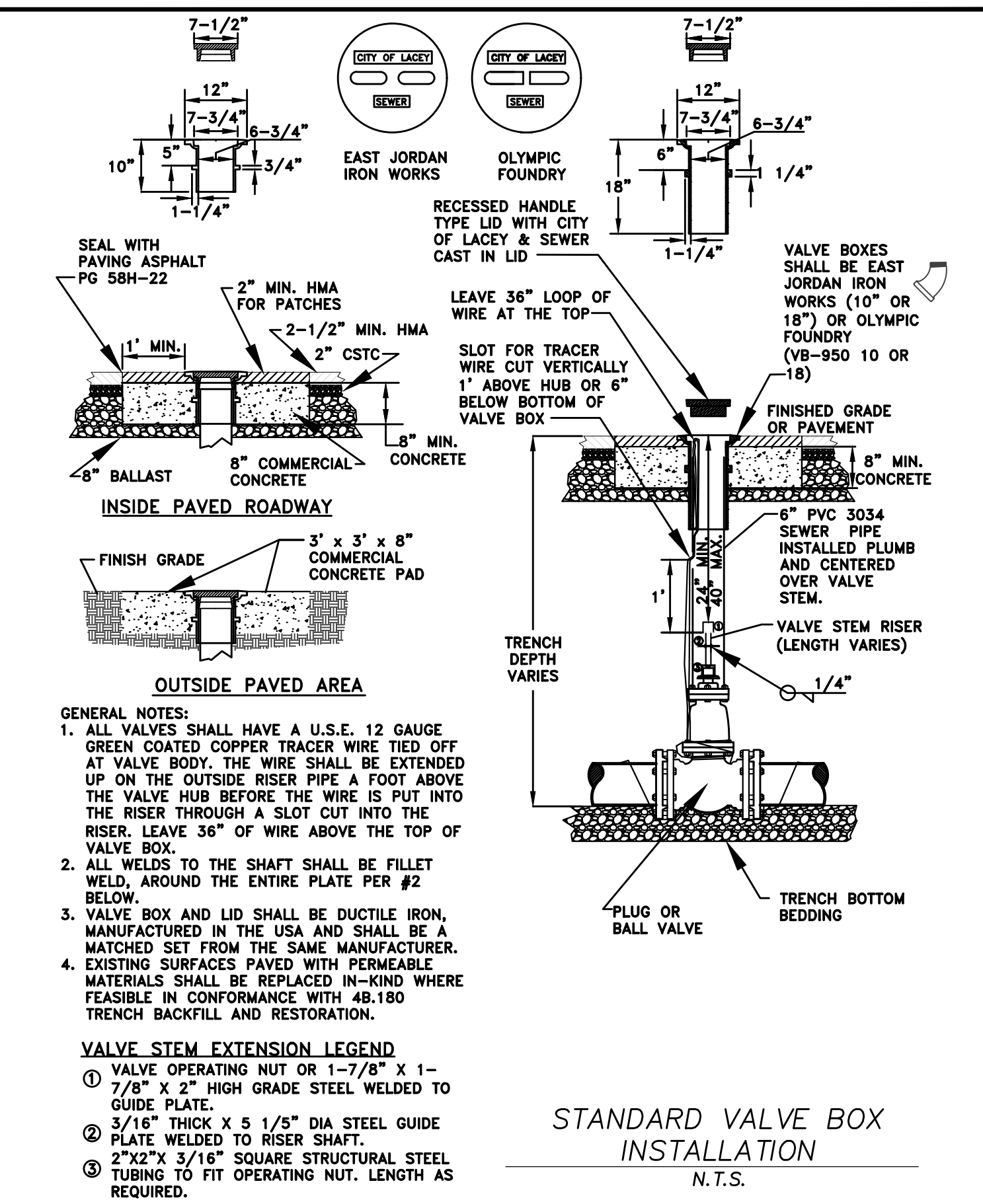
DEFLECTED PRESSURE SEWER MAIN INSTALLATION
N.T.S.



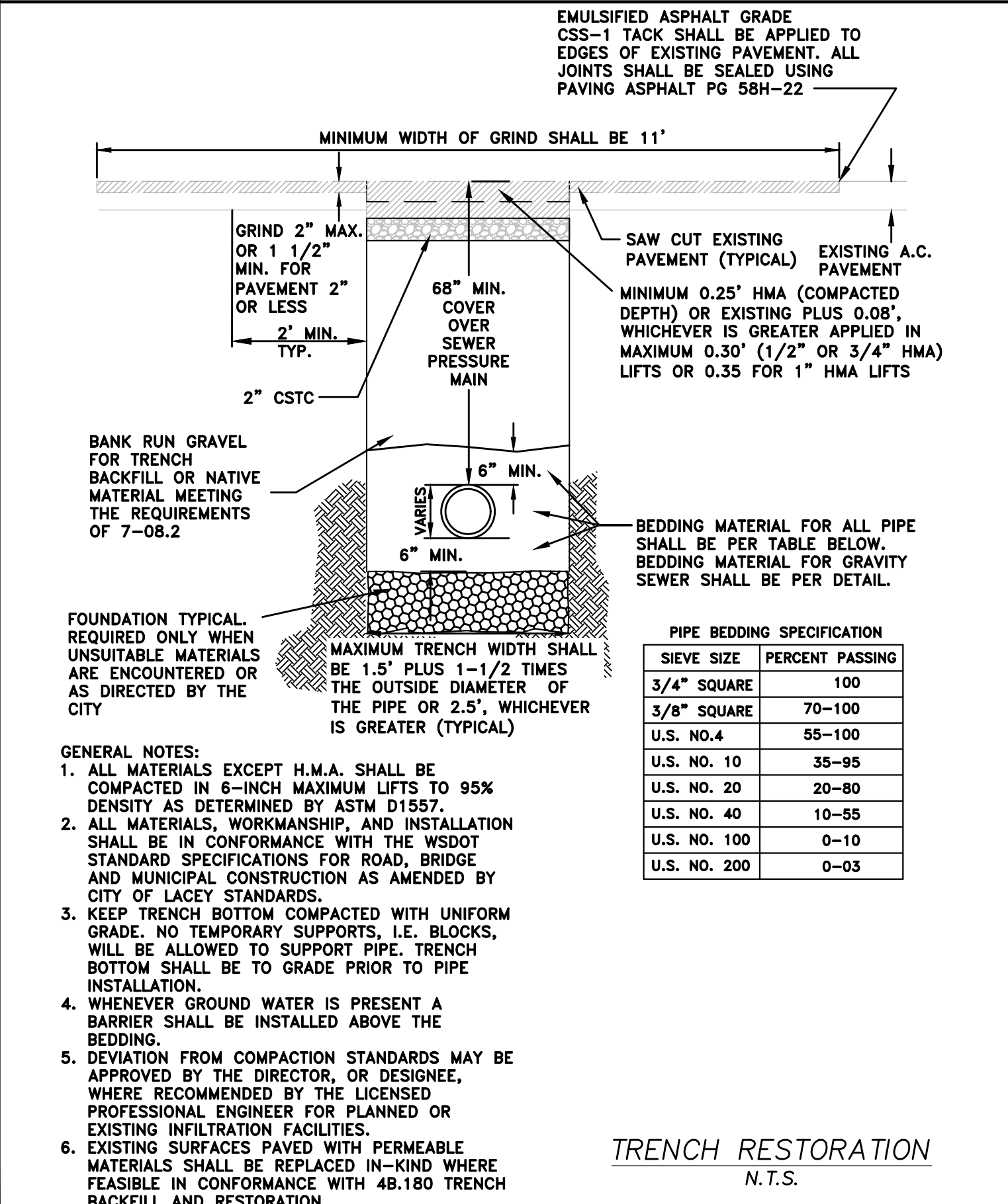
CAST IN PLACE MONUMENT
N.T.S.



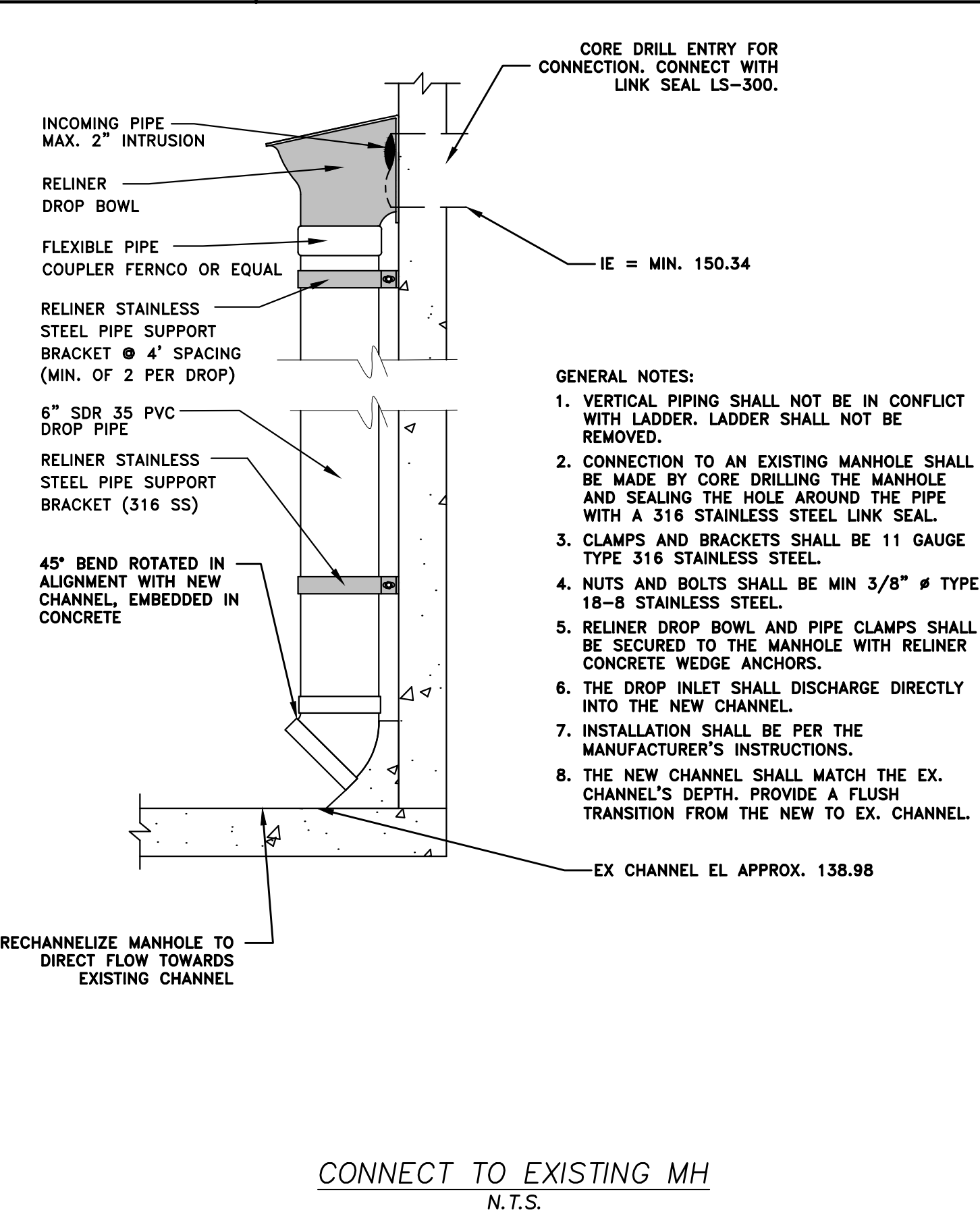
- GENERAL NOTES:
- ON MANHOLES OUTSIDE OF THE ASPHALT ADD REINFORCING STEEL AS SHOWN ABOVE, DEFORMED BAR TO MEET ASTM A615 GRADE 60 F_y=60,000 P.S.I.
 - ALL WATER MANHOLE LIDS SHALL BE EAST JORDAN IRON WORKS OR OLYMPIC FOUNDRY WSDOT STYLE #MH-41 CITY OF LACEY LOGO LIDS.
 - ALL LIDS SHALL BE DUCTILE IRON AND MANUFACTURED IN THE USA.



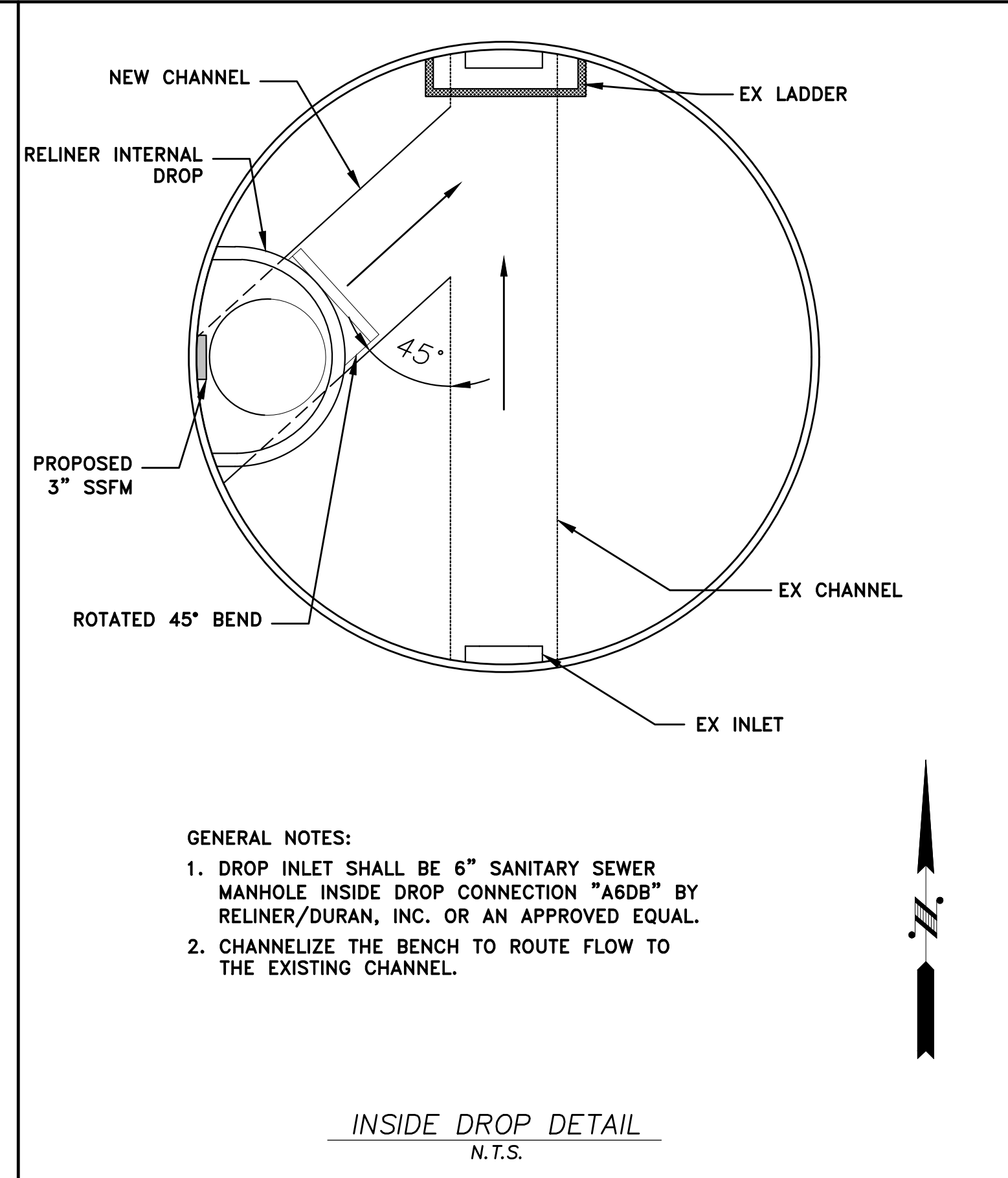
STANDARD VALVE BOX INSTALLATION
N.T.S.



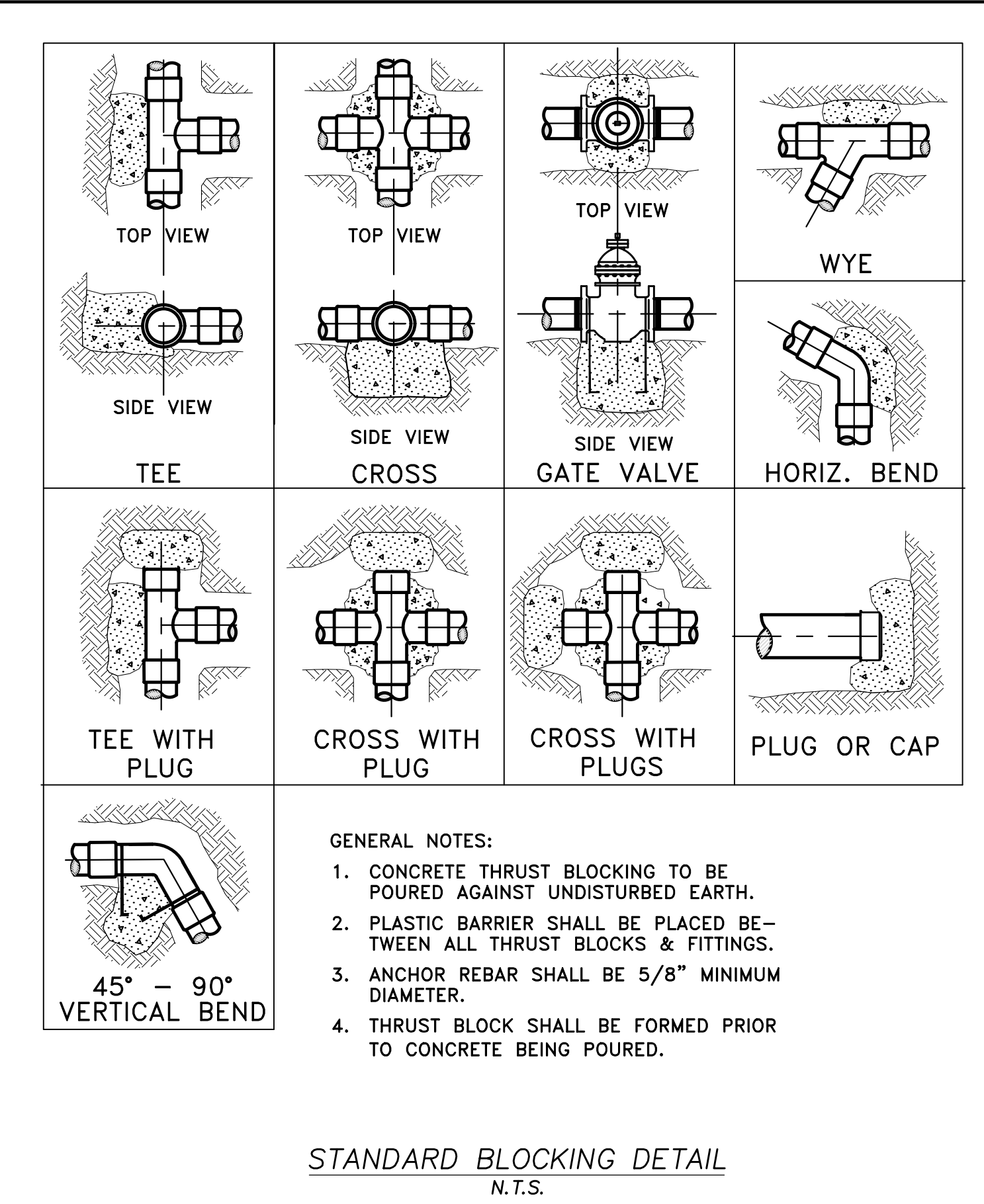
TRENCH RESTORATION
N.T.S.



CONNECT TO EXISTING MH
N.T.S.

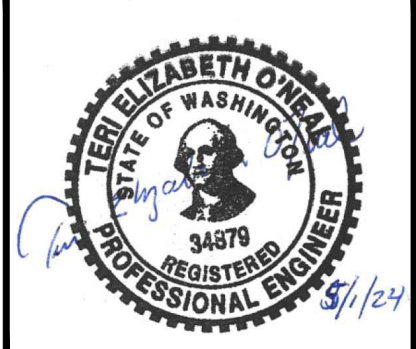


INSIDE DROP DETAIL
N.T.S.



STANDARD BLOCKING DETAIL
N.T.S.

CITY OF LACEY, WASHINGTON
DEPARTMENT OF PUBLIC WORKS
420 COLLEGE STREET SE
LACEY, WA 98503-1238 (360) 491-5600



DESIGNED: RKJ
DRAFTED: RKJ
CHECKED: TEO
HORZ. SCALE: N/A
VERT. SCALE: N/A
FILE: WALDRON GRINDER EXT

WALDRON GRINDER EXTENSION
DETAIL SHEET

REVISION BLOCK			PAGE NO.	SHEET NO.
NO.	DATE	DESCRIPTION	D1	4
			DWG NO.	OF
			D-23-35	4